

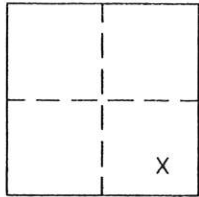
CORNER RECORD

Document Number 262

Sec. 33, T.24N.R.11E. M.D.M.

County of Plumas County, California

Brief Legal Description Lot 114 Greenhorn Ranch Sub. 1 Book 3 RM page 70



CORNER TYPE

Government Corner Control
Meander Property
Rancho Other
Date of Survey January 19, 2004

COORDINATES (Optional)

N. _____
E. _____
Zone _____ Datum _____
Elev. _____

Corner— Left as found Found and tagged Established Reestablished Rebuilt

Identification and type of corner found: Evidence used to identify or procedure used to establish or reestablish the corner:
Found corners shown on attached sketch in good condition. Northwest R/W corner of lot 114 fell on large boulder. Set witness corner on line stamped W C 5' as shown on sketch.

A description of the physical condition of the monument as found and as set or reset:
Found monuments were 1/2" iron Pipe tagged RCE 13054, in good condition. Set 5/8" rebar with aluminum cap marked LS 2843.

SURVEYOR'S STATEMENT

This Corner Record was prepared by me or under my direction in conformance with the Land Surveyors' Act on January, 2004.

Signed John W. Hamby L.S. 2843
John W. Hamby



COUNTY SURVEYOR'S STATEMENT

This Corner Record was received 1-20 2004 and examined and filed February 6 2004.

Signed R Tom Hunter Title Engineer

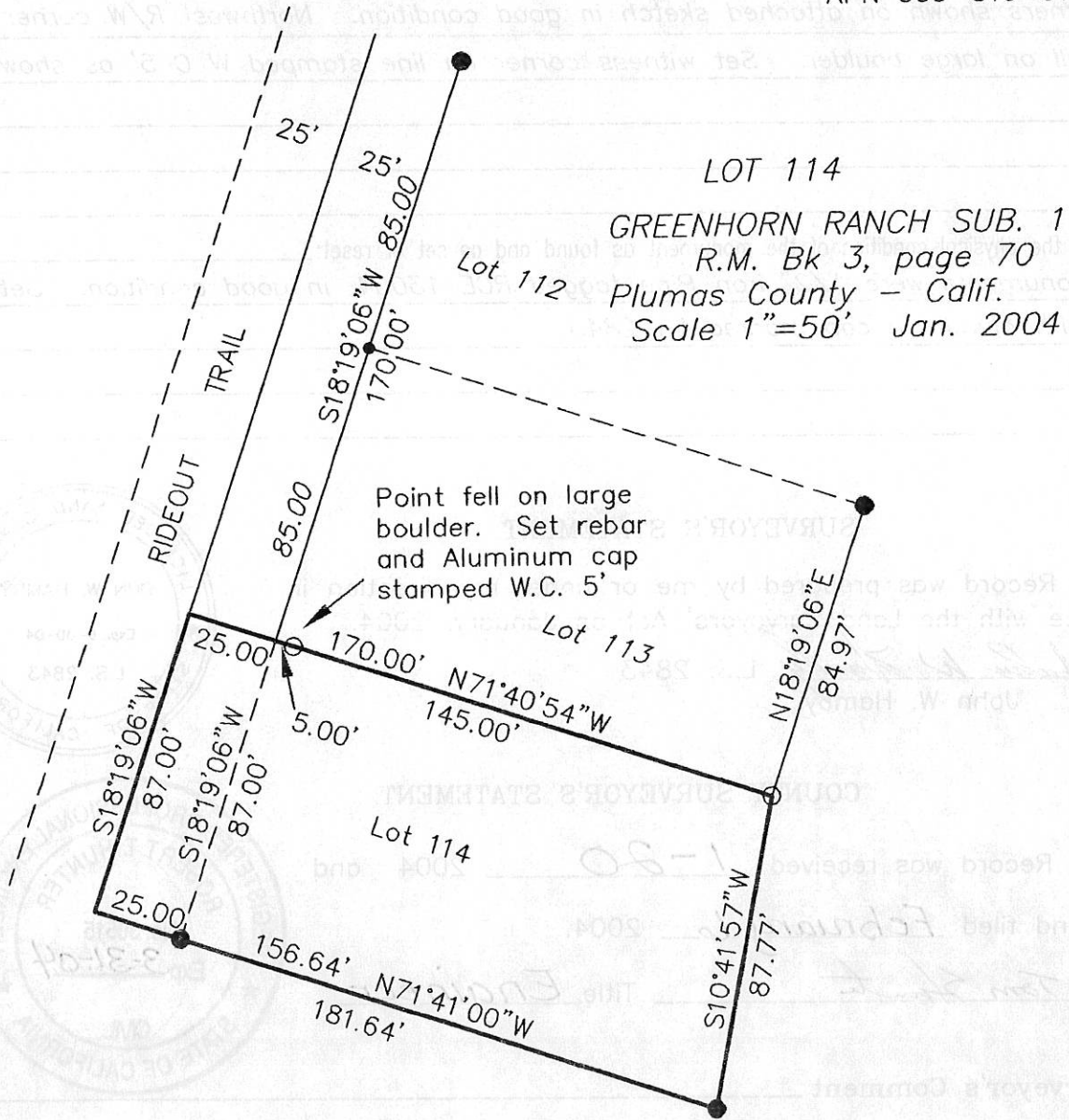


County Surveyor's Comment _____

- FOUND 1/2" IP tagged RCE 13054
 - SET 5/8" Rebar & Aluminum Cap LS 2843
- All bearings and distances shown are Record per 3 RM 70 and measured.
- Nothing found or set.



APN 009-310-011



Hamby Surveying Inc.
 P.O. Box 1209
 Portola, CA 96122
 (530) 832-5571

03343