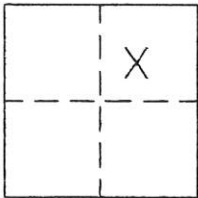


CORNER RECORD

Document Number 263

IN THE NE1/4 OF SEC. 8, T.22N., R12E., M.D.M. County of PLUMAS, California

Brief Legal Description LOT 35 OF PLUMAS-EUREKA ESTATES, UNIT NO. 2; 4 M 96-97



CORNER TYPE

Government Corner Control
Meander Property
Rancho Other
Date of Survey FEBRUARY 4, 2004

COORDINATES
(Optional)

N. _____
E. _____
Zone _____ Datum _____
Elev. _____

Corner— Left as found Found and tagged Established Reestablished Rebuilt

Identification and type of corner found: Evidence used to identify or procedure used to establish or reestablish the corner:

FOUND POINTS AS SHOWN AND DESCRIBED ON ATTACHED SKETCH AND AS SHOWN ON 4 M 96-97

A description of the physical condition of the monument as found and as set or reset: _____

FOUND POINTS AS DESCRIBED AND IN GOOD CONDITION. POINTS SET AS SHOWN ON ATTACHED SKETCH.

SURVEYOR'S STATEMENT

This Corner Record was prepared by me or under my direction in conformance with the Land Surveyors' Act on February 4, 2004.

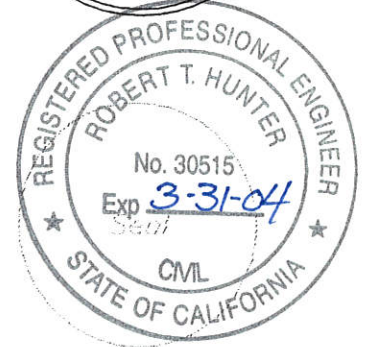
Signed John W. Hamby L.S. 2843
John W. Hamby



COUNTY SURVEYOR'S STATEMENT

This Corner Record was received 2-5 2004 and examined and filed February 6 2004.

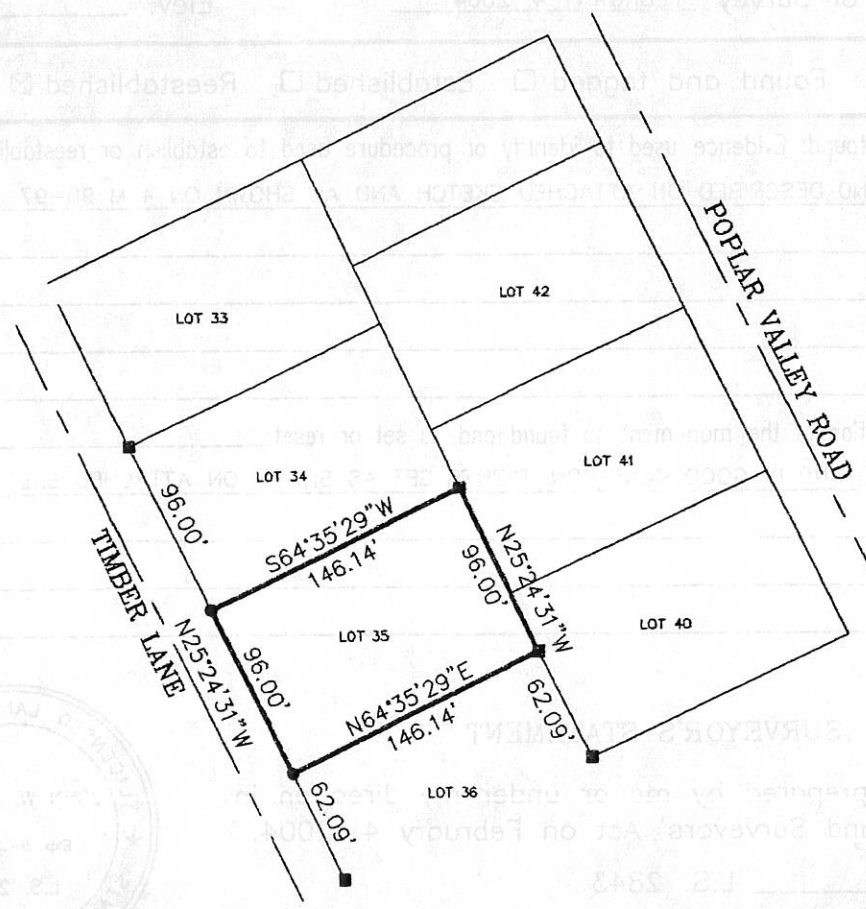
Signed R Tom Hunter Title Engineer



County Surveyor's Comment _____



1" = 100'



LEGEND

- FOUND 1/2" Rebar
 - SET 5/8" Rebar & Aluminum Cap LS 2843
- All data is Record and Measured per 4 M 96-97

Hamby Surveying Inc.
 P.O. Box 1209
 Portola, CA 96122
 (530) 832-5571

03347