

CORNER TYPE

Government Corner Control
Meander Property
Rancho Other
Date of Survey DECEMBER, 2003

COORDINATES (Optional)

N. _____
E. _____
Zone _____ Datum _____
Elev. _____

Corner- Left as found Found and tagged Established Reestablished Rebuilt

Identification and type of corner found: Evidence used to identify or procedure used to establish or reestablish the corner:
FOUND POINTS AS SHOWN AND DESCRIBED ON ATTACHED SKETCH AND AS SHOWN ON
5 PM 66 and 6 PM 67.

A description of the physical condition of the monument as found and as set or reset: _____
FOUND POINTS AS DESCRIBED AND IN GOOD CONDITION. POINTS SET AS SHOWN ON ATTCHED
SKETCH.

SURVEYOR'S STATEMENT

This Corner Record was prepared by me or under my direction in conformance with the Land Surveyors' Act on December 10, 2003

Signed John W. Hamby L.S. 2843
John W. Hamby



COUNTY SURVEYOR'S STATEMENT

This Corner Record was received March 31 2004 and examined and filed April 13, 2004.

Signed Tom Hunter Title Engineer

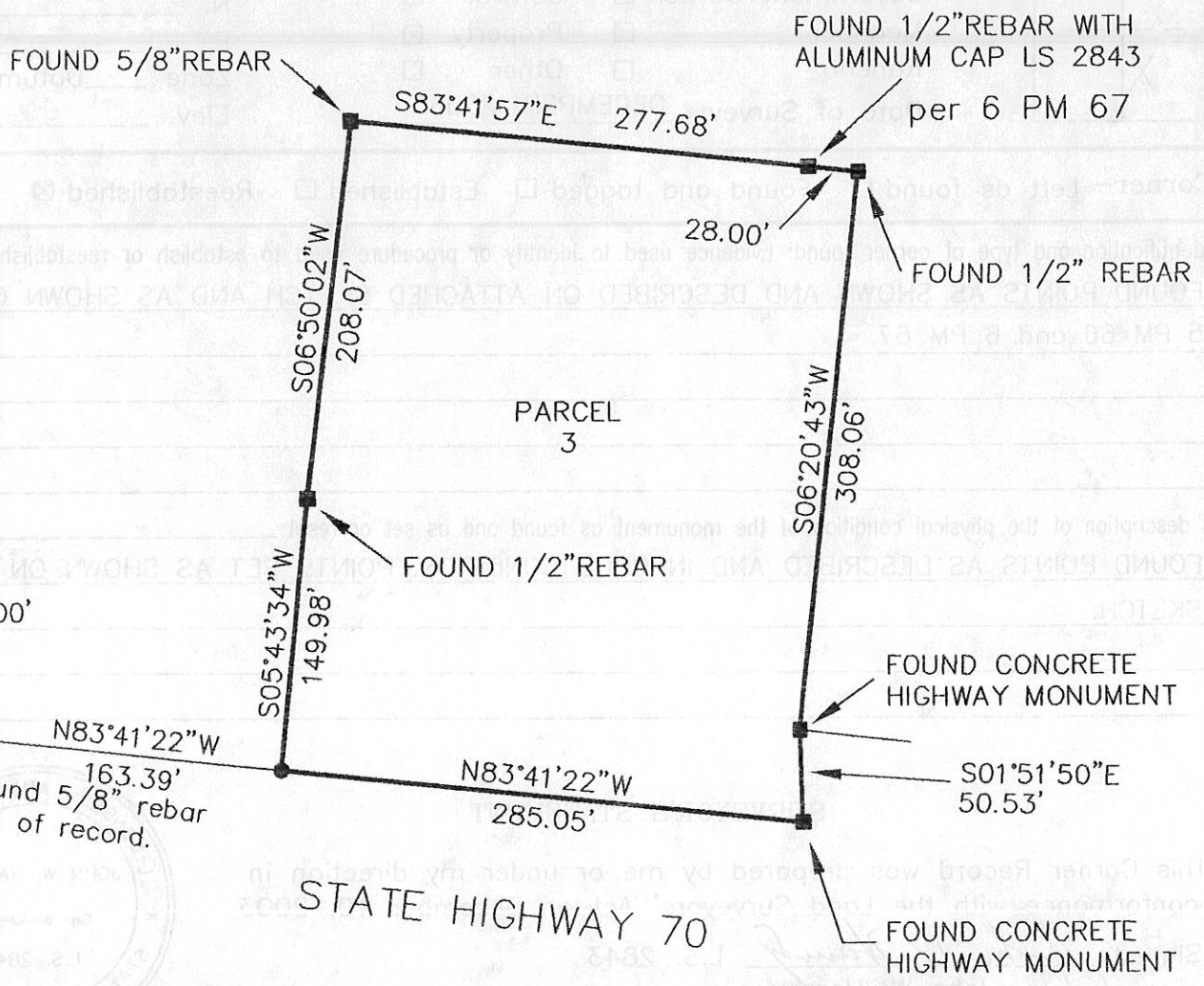


County Surveyor's Comment _____

244
010-180-034



1" = 100'



LEGEND

- FOUND point as described
- SET 5/8" Rebar & Aluminum Cap LS 2843

Hamby Surveying Inc.
 P.O. Box 1209
 Portola, CA 96122
 (530) 832-5571

03227