

CORNER TYPE

Government Corner  Control   
 Meander  Property   
 Rancho  Other   
 Date of Survey March 28, 2004

COORDINATES (Optional)

N. \_\_\_\_\_  
 E. \_\_\_\_\_  
 Zone \_\_\_\_\_ Datum \_\_\_\_\_  
 Elev. \_\_\_\_\_

Corner- Left as found  Found and tagged  Established  Reestablished  Rebuilt

Identification and type of corner found: Evidence used to identify or procedure used to establish or reestablish the corner:  
Found monuments indicated in good condition and in locations indicated. Northeast corner of Parcel 2  
fell in a stream.

A description of the physical condition of the monument as found and as set or reset: Found points as shown on  
8 PM 24 except the Northeast corner of Parcel 2 which fell in a stream. Set monuments marked W C  
as shown on attached sketch.

SURVEYOR'S STATEMENT

This Corner Record was prepared by me or under my direction in conformance with the Land Surveyors' Act on March 28, 2004.

Signed John W. Hamby L.S. 2843  
John W. Hamby



COUNTY SURVEYOR'S STATEMENT

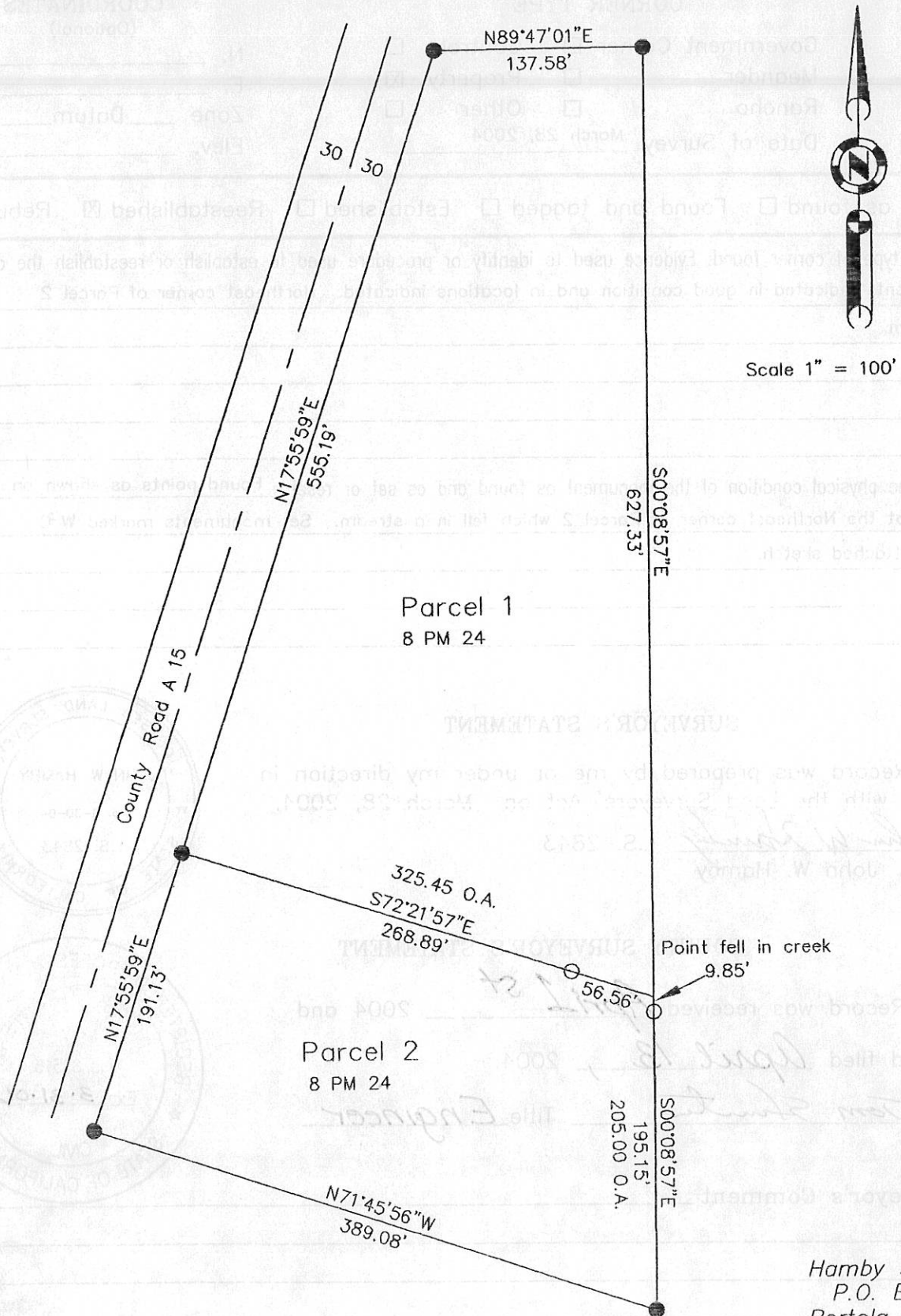
This Corner Record was received April 1st 2004 and  
 examined and filed April 13, 2004.

Signed R Tom Stunte Title Engineer



County Surveyor's Comment \_\_\_\_\_

- FOUND Rebar with Aluminum Cap LS 2843
  - SET 5/8" Rebar & Plastic Cap LS 2843 Witness corner.
- (R1) RECORD per 8 PM 24



Hamby Surveying Inc.  
P.O. Box 1209  
Portola, CA 96122  
(530) 832-5571

04048