

003-080-

# CORNER RECORD

Document Number 267

Nearest town La Porte County of Plumas, California  
The beginning and end of curve on the Northerly sideline of Glenwood Way, La Porte Pines Country Club, Book 2 of Subdivision Maps, Page 71, in the office of the Plumas County Recorder. Within Section 17, Township 21 North, Range 9 East, Mount Diablo Meridian.

### CORNER TYPE

Property corner

Date of Survey June 12, 2004

Corner - Left as found \_\_\_ Found and tagged X Established \_\_\_ Reestablished X  
Rebuilt \_\_\_

Identification and type of corner found: Evidence used to identify or procedure used to establish or reestablish the corner:

See Sketch - Page 2

A description of the physical condition of the monument as found and as set or reset:

See Sketch - Page 2

### SURVEYOR'S STATEMENT

THIS CORNER RECORD WAS PREPARED BY ME OR UNDER MY DIRECTION IN CONFORMANCE WITH THE LAND SURVEYOR'S ACT ON JUNE 12, 2004.

Signed Gerald Joseph Tibbedeaux P.L.S. 6051  
Gerald Joseph Tibbedeaux

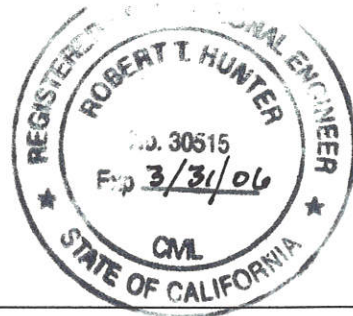


### COUNTY SURVEYOR'S STATEMENT

THIS CORNER RECORD WAS RECEIVED June 12, 2004

AND EXAMINED AND FILED Aug - 26, 2004

Signed R. Tom Hunter R.C.E. 30515  
R. Tom Hunter  
Plumas County Surveyor



County Surveyor's Comment

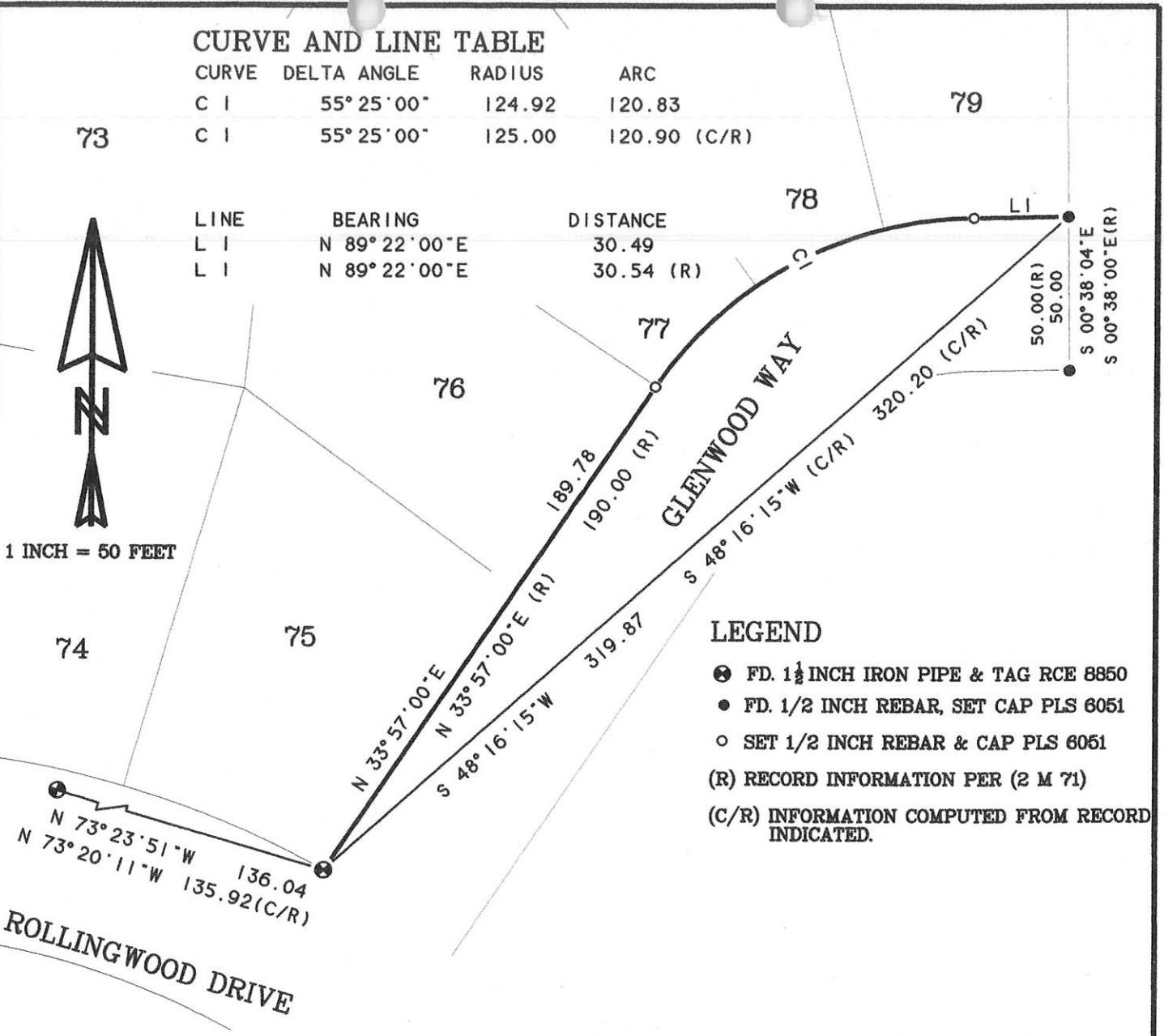
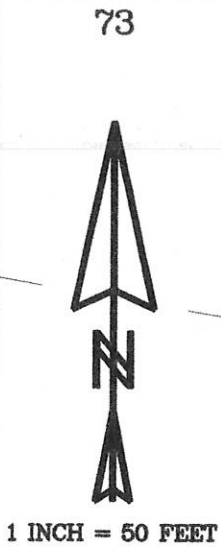
\_\_\_\_\_  
\_\_\_\_\_  
\_\_\_\_\_

267

**CURVE AND LINE TABLE**

CURVE	DELTA ANGLE	RADIUS	ARC
C 1	55° 25' 00"	124.92	120.83
C 1	55° 25' 00"	125.00	120.90 (C/R)

LINE	BEARING	DISTANCE
L 1	N 89° 22' 00" E	30.49
L 1	N 89° 22' 00" E	30.54 (R)



**LEGEND**

- ⊗ FD. 1½ INCH IRON PIPE & TAG RCE 8850
- FD. 1/2 INCH REBAR, SET CAP PLS 6051
- SET 1/2 INCH REBAR & CAP PLS 6051
- (R) RECORD INFORMATION PER (2 M 71)
- (C/R) INFORMATION COMPUTED FROM RECORD INDICATED.

**NOTES:**

1. The Subdivision Map (2 M. 71) does not indicate what type of monumentation, if any, was set at the lot corners of this Subdivision. I recovered 1/2 inch rebar (untaged) at the locations shown and at several other lot corner locations that agree with the locations shown on the map. I accept the 1/2 inch rebar as being the lot corners set for the subdivision.
2. The Subdivision Map (2 M. 71) shows the location of lot corners by chord bearing and distance. I have redefined the curves shown on this corner record to a radius, delta and arc definition calculated from the indicated record.

**SKETCH OF MONUMENT REPLACEMENT FOR EILEEN EBEBY**

THE BEGINNING & END OF CURVE ON THE NORTHERLY SIDELINE OF GLENWOOD WAY  
 BOOK 2 OF SUBDIVISION MAPS, PAGE 71  
 WITHIN SECTION 17, T. 21N., R. 9E., M.D.M.

**PLUMAS COUNTY CALIFORNIA**

SCALE 1 INCH = 50 FEET      JUNE 2004

Tibbedeaux Surveying  
 P.O. Box 1960 - 565 Ridge St.  
 Portola, CA 96122  
 (530) 832-5772

04-11-2