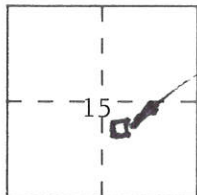


CORNER RECORD

Document Number 268

City of _____ County of PLUMAS, California

Brief Legal Description S.W. corner Lot 7, BK 6 MAPS PG.114 to 116 in S1/2 Section 15,
Township 24 North, Range 9 East, M.D.M.



AREA OF SURVEY

CORNER TYPE

Government Corner Control
Meander Property
Rancho Other
Date of Survey August 12, 2004

COORDINATES
(Optional)

N. _____
E. _____
Zone _____ Datum _____
Elev. _____

Corner — Left as found Found and tagged Established Reestablished Rebuilt

Identification and type of corner found: Evidence used to identify or procedure used to establish or reestablish the corner:
Corner was lost. Found 1-1/2" Aluminum capped rebars on either side of Lots 6 & 7 in agreement with Meadow View Subdivision Map, per; 6 - MAPS - 114 to 116., as shown on detail on other side.

A description of the physical condition of the monument as found and as set or reset:
Set a 1" rebar with stainless steel tag wired to side. Tag is stamped RCE 29700. Bar is just Westerly of a water valve box.

SURVEYOR'S STATEMENT

This Corner Record was prepared by me or under my direction in conformance with the Land Surveyors' Act on August 16, 2004 ~~19~~ XXX

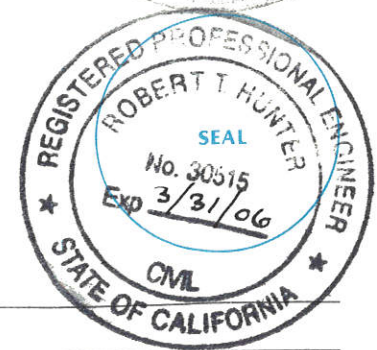
Signed *Richard R. Simpson* ~~XXX~~ or R.C.E. Number 29700
Expires 3-31-07



COUNTY SURVEYOR'S STATEMENT

This Corner Record was received Aug. 26, 2004 ~~XX~~ and examined and filed XX

Signed *R. Tom Shute* Title _____

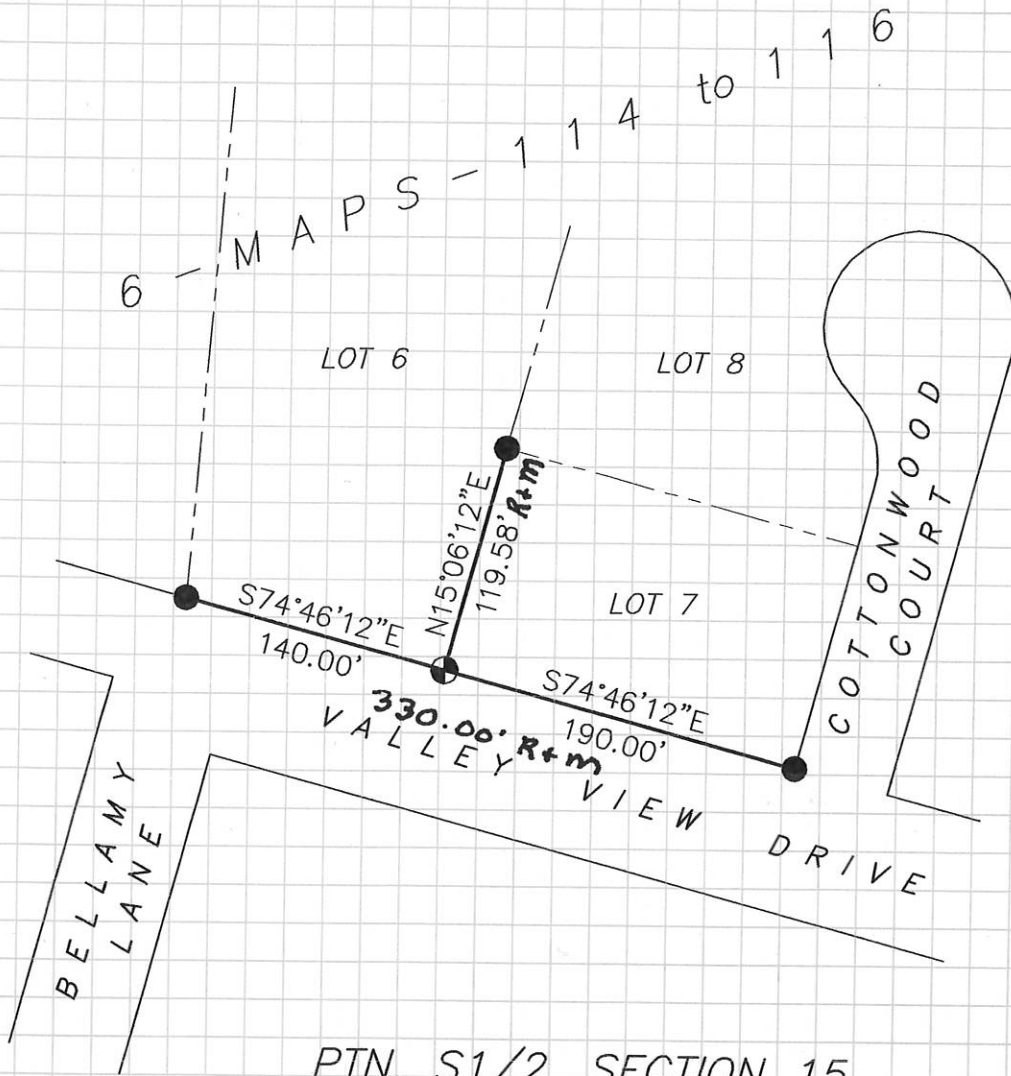


County Surveyor's Comment _____

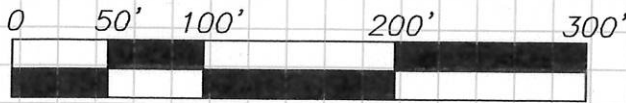
LEGEND:

- ⊕ SET 1" REBAR TAGGED RCE 29700
- FOUND 1-1/2" ALUM. CAP ON 1/2" REBAR,
STAMPED RCE 13225, PER: 6 MAPS 114-116

R+m Record equals measured



PTN. S1/2, SECTION 15
T. 24 N., R. 9 E., M.D.M.



SCALE: 1"=100'