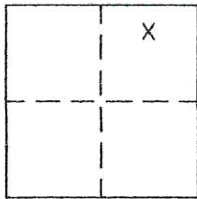


CORNER RECORD

Document Number 269

A portion of N.E.1/4 Section 17, T.21N.R.9E. MDM County of Plumas, California

Brief Legal Description Lot 10B - Laport Pines Country Club 2 M 71



CORNER TYPE

Government Corner Control
Meander Property
Rancho Other
Date of Survey Sept. 11, 2004 Found

COORDINATES (Optional)

N. _____
E. _____
Zone _____ Datum _____
Elev. _____

Corner- Left as found Found and tagged Established Reestablished Rebuilt

Identification and type of corner found: Evidence used to identify or procedure used to establish or reestablish the corner:
Found all points indicated on the attached sketch in good condition and in proper location. Set a 5/8" rebar with aluminum cap stamped LS 2843 to replace the missing corner.

A description of the physical condition of the monument as found and as set or reset: _____
see statement above

SURVEYOR'S STATEMENT

This Corner Record was prepared by me or under my direction in conformance with the Land Surveyors' Act on Sept 11, 2004.

Signed John W. Hamby L.S. 2843
John W. Hamby



COUNTY SURVEYOR'S STATEMENT

This Corner Record was received 9/22 2004 and examined and filed 10/04 2004.

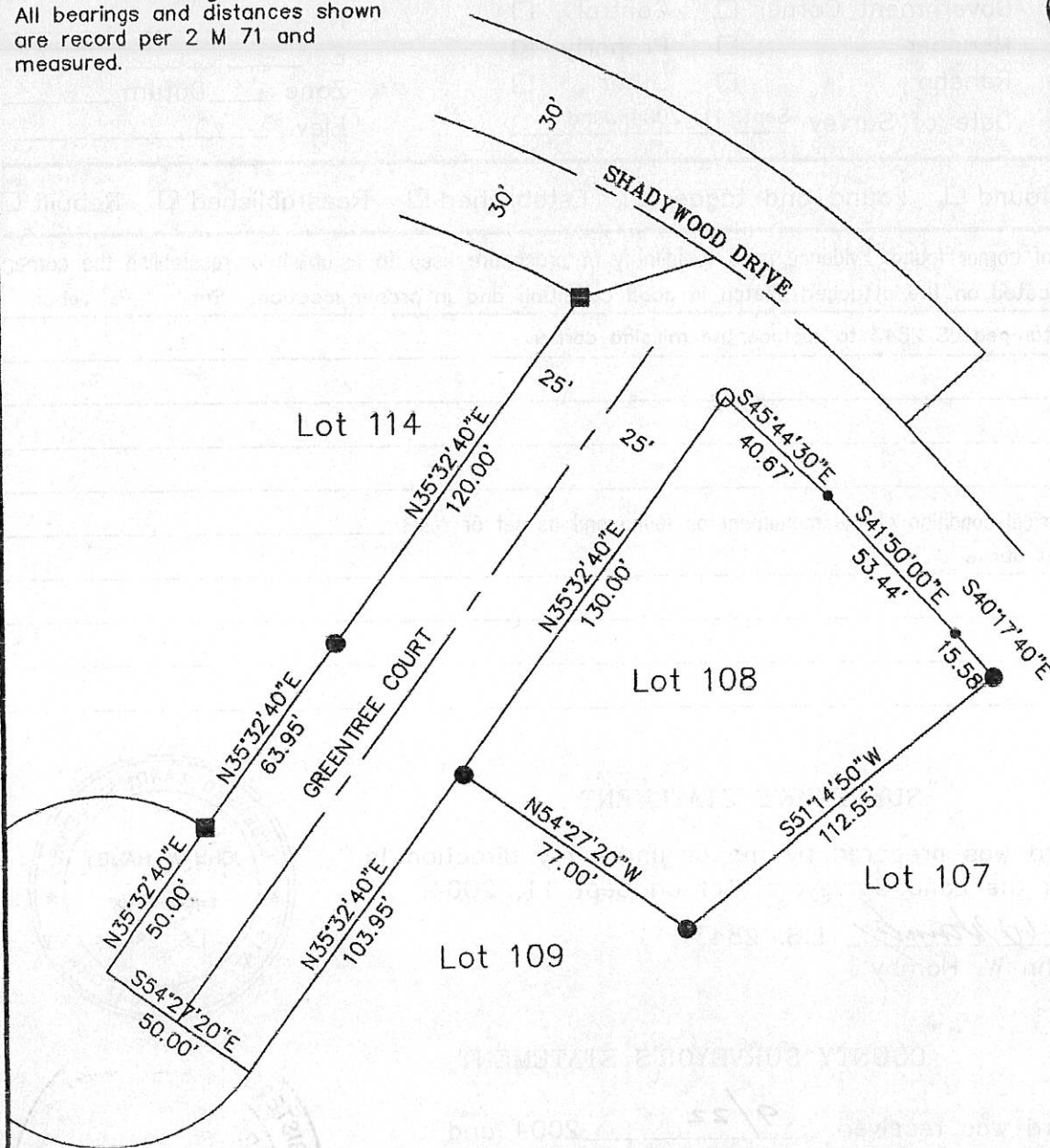
Signed R. Tom Hunter Title _____



County Surveyor's Comment _____

- FOUND 1/2" rebar per 2 M 71
- FOUND 1 " Iron Pipe per 2 M 71
- SET 5/8" Rebar & Aluminum Cap LS 2843
- Nothing found or set

All bearings and distances shown are record per 2 M 71 and measured.



Lot 108
 La Porte Pines Country Club
 A portion of Section 17,
 T.21N.R.9E., M.D.M.
 Plumas County, Ca.
 Sept. 2004 Scale 1"=50'

Hamby Surveying Inc.
 P.O. Box 1209
 Portola, CA 96122
 (530) 832-5571