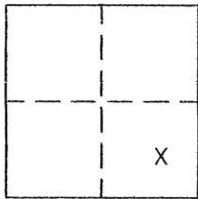


CORNER RECORD

Document Number 270

Portion Section 8, T.23N.R.14E.,MDM County of Plumas, California

Brief Legal Description Lot 60 Welch Estates Unit No. 1 per 2 M 11



CORNER TYPE

Government Corner  Control   
 Meander  Property   
 Rancho  Other   
 Date of Survey AUGUST 30, 2004

COORDINATES

(Optional)

N. \_\_\_\_\_  
 E. \_\_\_\_\_  
 Zone \_\_\_\_\_ Datum \_\_\_\_\_  
 Elev. \_\_\_\_\_

Corner— Left as found  Found and tagged  Established  Reestablished  Rebuilt

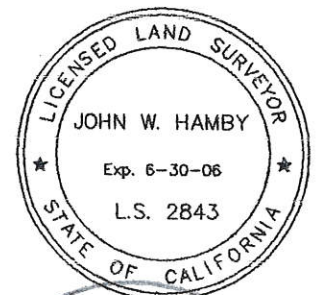
Identification and type of corner found: Evidence used to identify or procedure used to establish or reestablish the corner:  
 Found corners indicated on attached sketch in good condition and in proper location except the Southwest corner of Lot 60 which was out of the ground. We reset it with a 5/8" rebar with aluminum cap stamped LS 2843, in record position.

A description of the physical condition of the monument as found and as set or reset: \_\_\_\_\_  
 see statement above.

SURVEYOR'S STATEMENT

This Corner Record was prepared by me or under my direction in conformance with the Land Surveyors' Act on August 30, 2004.

Signed John W. Hamby L.S. 2843  
 John W. Hamby



COUNTY SURVEYOR'S STATEMENT

This Corner Record was received 9/22 2004 and examined and filed 10/4 2004

Signed R. Tom Hunter Title \_\_\_\_\_



County Surveyor's Comment \_\_\_\_\_

- FOUND 3/4" I.P. open , 2 M 11 shows 1/2" I.P. to be set
- SET 5/8" Rebar & Aluminum Cap LS 2843
- Found 1 1/2" I.P. open per 2 M 11-13

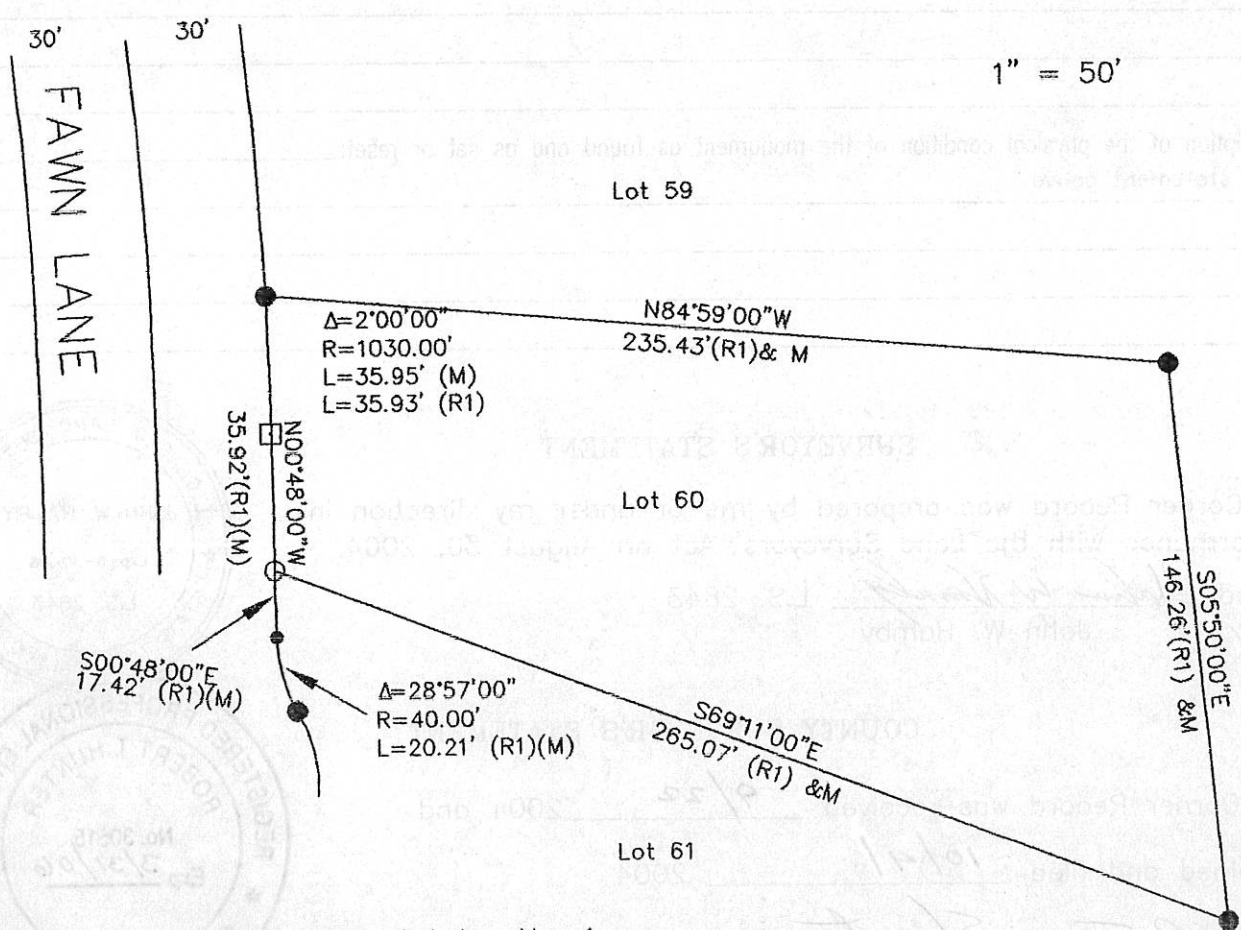
● Nothing found or set

(M) Measured

(R1) RECORD per 2 M 11



1" = 50'



LOT 60 Welch Estates No. 1  
 Book 2 Maps page 11  
 Plumas County, Ca.  
 Scale 1" = 50'  
 August, 2004

Hamby Surveying Inc.  
 P.O. Box 1209  
 Portola, CA 96122  
 (530) 832-5571