

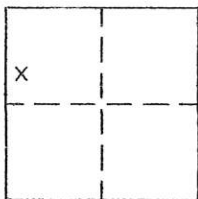
CORNER RECORD

Document Number 271

Portion NW 1/4 Sec. 23, T.22N.R.12E. MDM

County of Plumas, California

Brief Legal Description Lot 24 Graeagle Subdivision No.6 per 4 M 71



CORNER TYPE

Government Corner Control
Meander Property
Rancho Other
Date of Survey Sept.24, 2004

COORDINATES (Optional)

N. _____
E. _____
Zone _____ Datum _____
Elev. _____

Corner- Left as found Found and tagged Established Reestablished Rebuilt

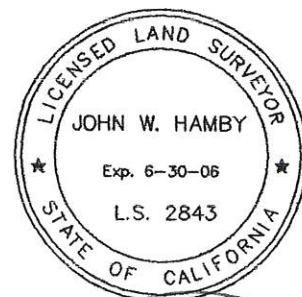
Identification and type of corner found: Evidence used to identify or procedure used to establish or reestablish the corner:
Found the corners indicated on attached sketch in good condition and in record locations.

A description of the physical condition of the monument as found and as set or reset:
Set 5/8" rebar with aluminum cap stamped LS2843 in record location to replace missing monument.

SURVEYOR'S STATEMENT

This Corner Record was prepared by me or under my direction in conformance with the Land Surveyors' Act on Sept. 24, 2004.

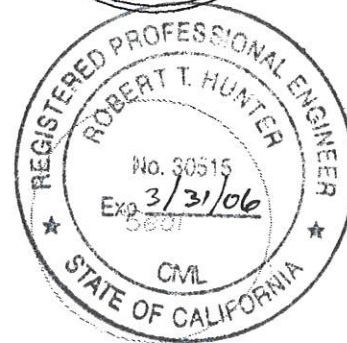
Signed John W. Hamby L.S. 2843
John W. Hamby



COUNTY SURVEYOR'S STATEMENT

This Corner Record was received 9/24 2004 and examined and filed 10/5 2004.

Signed R. Tom Hunter Title _____



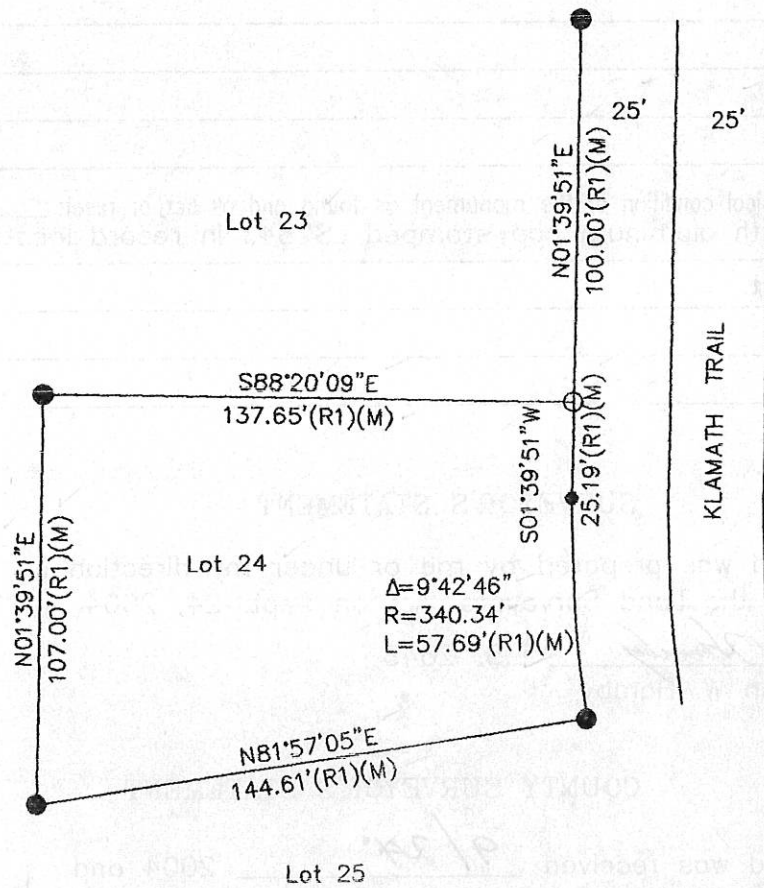
County Surveyor's Comment _____

- FOUND 1/2" Rebar per 4 M 71
- SET 5/8" Rebar & Aluminum Cap LS 2843

● Nothing found or set

(R1) RECORD per 4 M 71

(M) Measured



Lot 24 GRAEAGLE SUB. No 6
 4 m 71
 Plumas County, Calif.
 Scale 1"=50'
 Sept. 2004

Hamby Surveying Inc.
 P.O. Box 1209
 Portola, CA 96122
 (530) 832-5571