

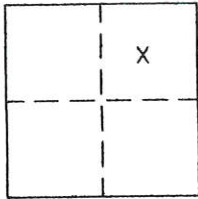
CORNER RECORD

Document Number 272

Portion Section 12, T.23N.R.13E. MDM

County of Plumas, California

Brief Legal Description Portion Lot 24, Grizzly Creek Retreat per Book 3 M 84



CORNER TYPE

Government Corner Control
Meander Property
Rancho Other
Date of Survey Sept, 20, 2004

COORDINATES (Optional)

N. _____
E. _____
Zone _____ Datum _____
Elev. _____

Corner- Left as found Found and tagged Established Reestablished Rebuilt

Identification and type of corner found: Evidence used to identify or procedure used to establish or reestablish the corner:
Found front corners shown on attached sketch in proper locations and in good condition.

A description of the physical condition of the monument as found and as set or reset:
Reset front corners of Lot 24 as shown on the attached sketch. Set 5/8" rebar with aluminum cap stamped LS 2843.

SURVEYOR'S STATEMENT

This Corner Record was prepared by me or under my direction in conformance with the Land Surveyors' Act on Sept. 20, 2004.

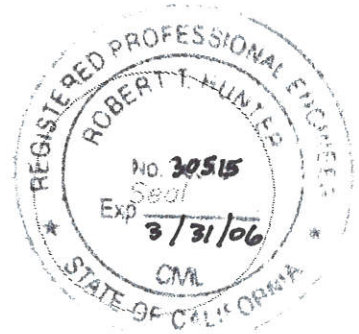
Signed John W. Hamby L.S. 2843
John W. Hamby



COUNTY SURVEYOR'S STATEMENT

This Corner Record was received Oct 4th 2004 and examined and filed Nov. 2nd 2004.

Signed R. Tom Spunter Title R.C.E. 30515



County Surveyor's Comment _____

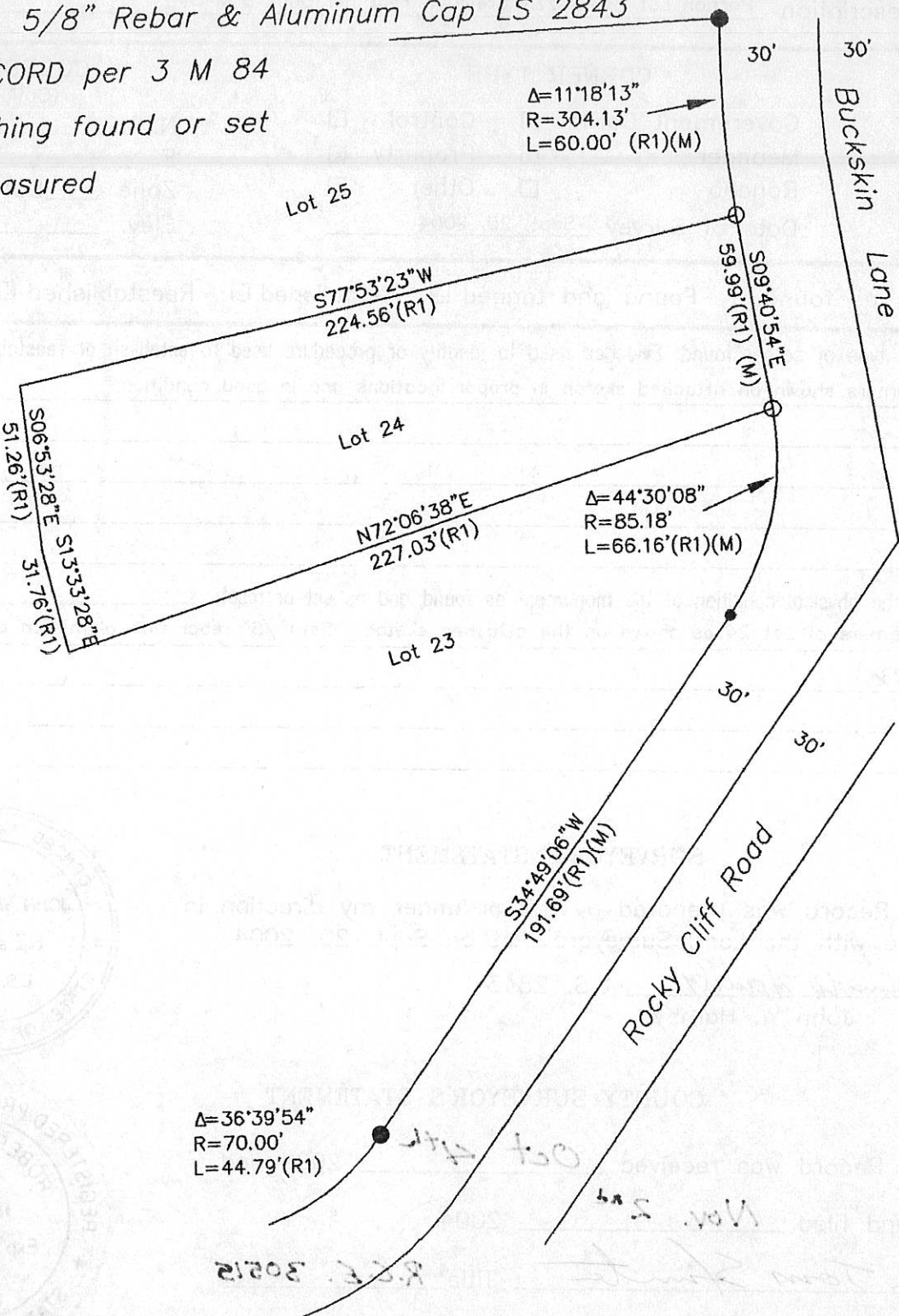
● FOUND 1/2" i.p. tagged LS 2702 per 3 M 84.

○ SET 5/8" Rebar & Aluminum Cap LS 2843

(R1) RECORD per 3 M 84

• Nothing found or set

(M) Measured



Portion Lot 24
 GRIZZLY CREEK RETREAT
 3 M 84
 Plumas County, Ca.
 Scale 1"=50'
 Sept. 2004

Hamby Surveying Inc.
 P.O. Box 1209
 Portola, CA 96122
 (530) 832-5571

04278