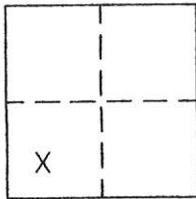


CORNER RECORD

Document Number 273

Portion Sec. 35T.23 N.R.13E. MDM County of Plumas, California

Brief Legal Description Lots 17,18,19,20 & 21, Block 11 West Portola, per Book A Maps, 26



CORNER TYPE

Government Corner Control
Meander Property
Rancho Other
Date of Survey Sept. 1, 2004

COORDINATES (Optional)

N. _____
E. _____
Zone _____ Datum _____
Elev. _____

Corner— Left as found Found and tagged Established Reestablished Rebuilt

Identification and type of corner found: Evidence used to identify or procedure used to establish or reestablish the corner:
Found points shown on attached sketch in good condition, and in proper locations.
Set points shown in record locations per A Maps 26.

A description of the physical condition of the monument as found and as set or reset: _____
see above.

SURVEYOR'S STATEMENT

This Corner Record was prepared by me or under my direction in conformance with the Land Surveyors' Act on Sept. 23, 2004.

Signed John W. Hamby L.S. 2843
John W. Hamby



COUNTY SURVEYOR'S STATEMENT

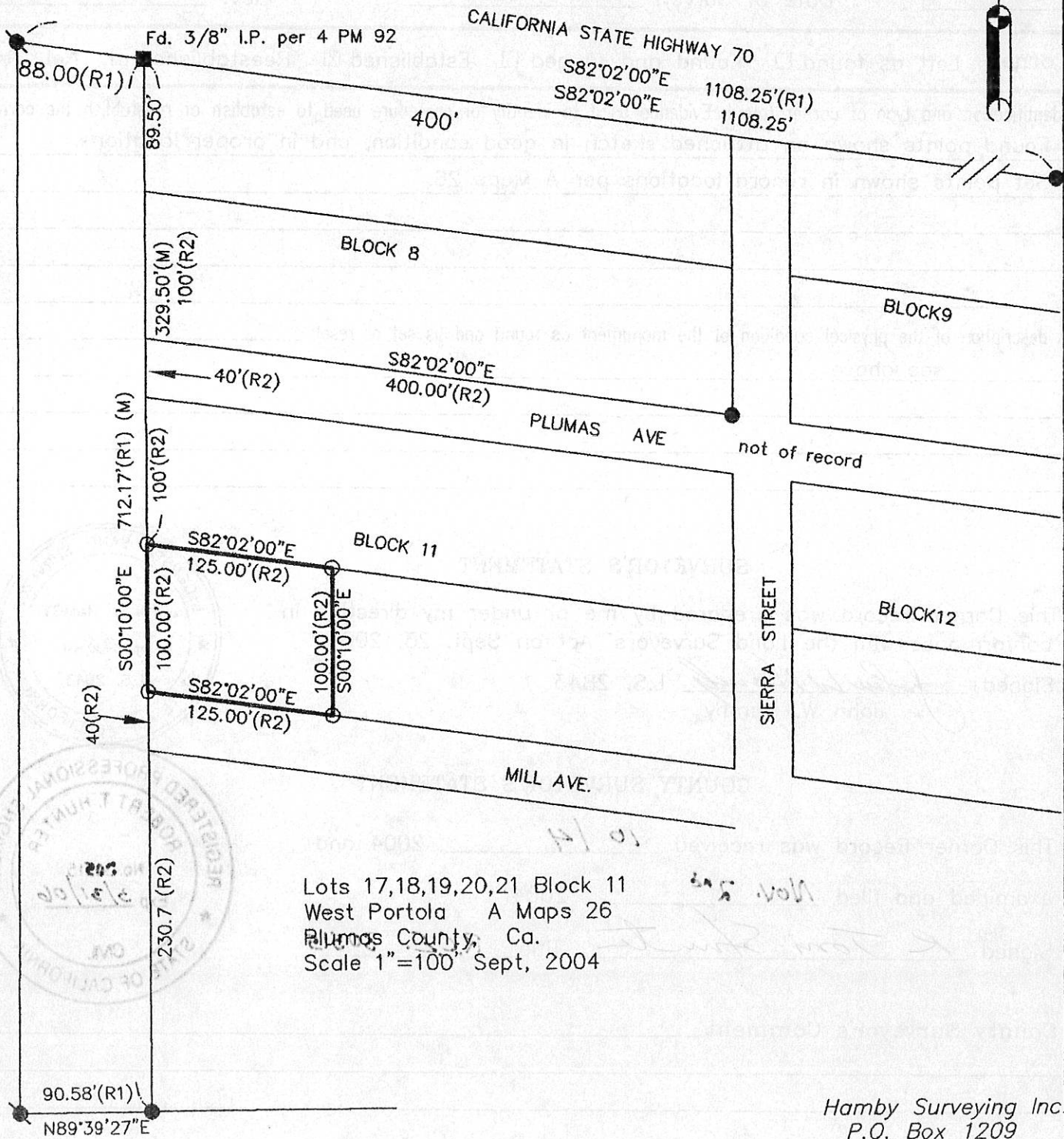
This Corner Record was received 10/4 2004 and examined and filed Nov. 2nd 2004.

Signed R. Tom Hunter Title R.C.E. 30515



County Surveyor's Comment _____

- FOUND point as described
- FOUND Rebar with Aluminum Cap LS 2843 per (R2) or as noted
- SET 5/8" Rebar & Aluminum Cap LS 2843
- FOUND 3/4" IP tagged LS 3297 per 4 PM 92
- (R1) RECORD per 4 PM 92
- (R2) RECORD per A Maps 26
- (M) Measured



Lots 17,18,19,20,21 Block 11
 West Portola A Maps 26
 Plumas County, Ca.
 Scale 1"=100' Sept, 2004

Hamby Surveying Inc.
 P.O. Box 1209
 Portola, CA 96122
 (530) 832-5571