

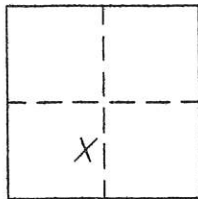
CORNER RECORD

Document Number 274

Section 22, T.24N.R.6E. M.D.M.

County of Plumas, California

Brief Legal Description Parcel 11 per 2 RS 44



CORNER TYPE

Government Corner Control
Meander Property
Rancho Other
Date of Survey Aug. 15, 2003

COORDINATES
(Optional)

N. _____
E. _____
Zone _____ Datum _____
Elev. _____

Corner— Left as found Found and tagged Established Reestablished Rebuilt

Identification and type of corner found: Evidence used to identify or procedure used to establish or reestablish the corner:
Found the points indicated on attached sketch in good condition.

A description of the physical condition of the monument as found and as set or reset: _____
Found indicated points in good condition. Set witness corners to points on South line of property which falls in center of stream. Also set witness corners to North line which falls in pavement.

SURVEYOR'S STATEMENT

This Corner Record was prepared by me or under my direction in conformance with the Land Surveyors' Act on August 15, 2003.

Signed John W. Hamby L.S. 2843
John W. Hamby



COUNTY SURVEYOR'S STATEMENT

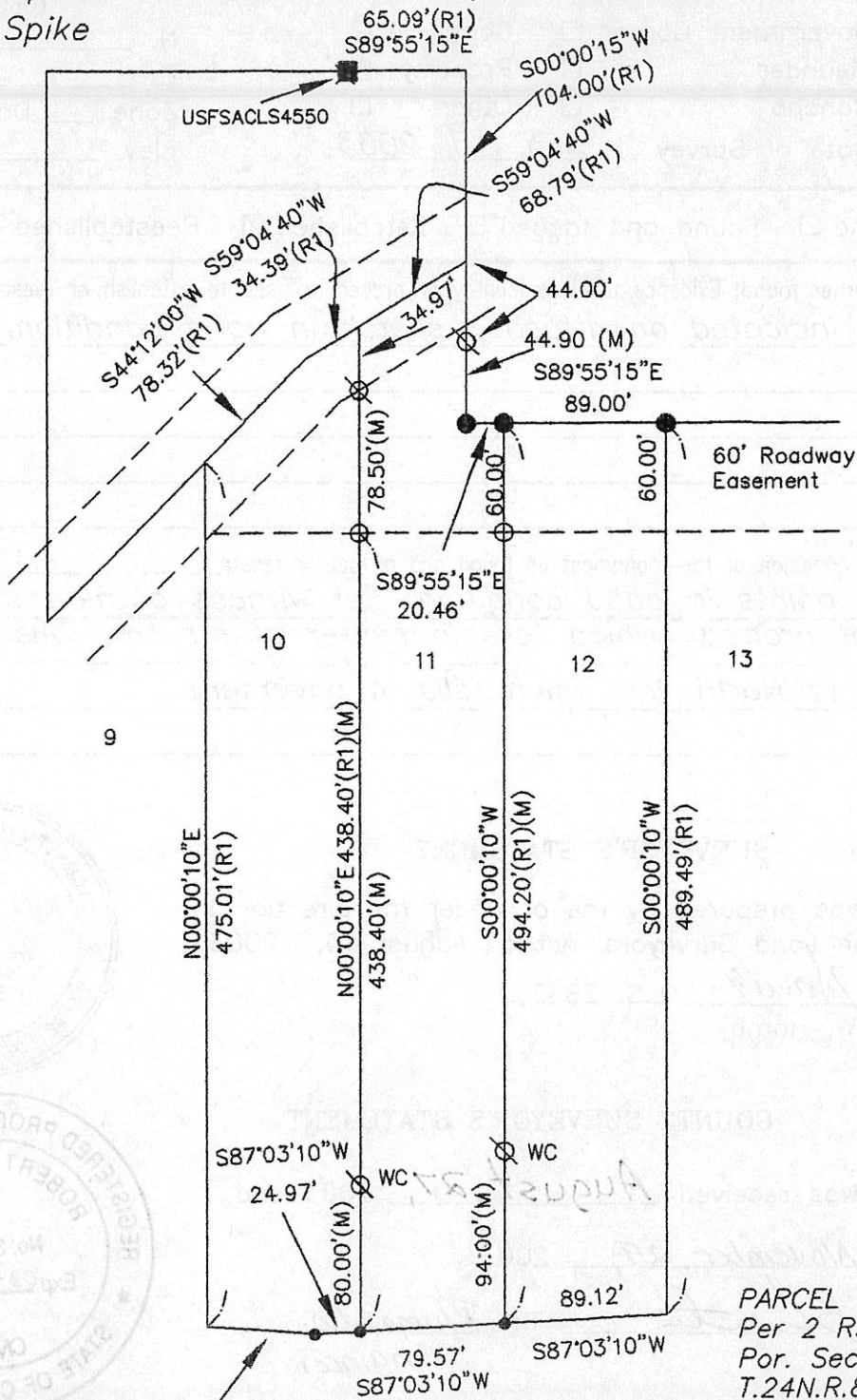
This Corner Record was received August 27, 2003 and examined and filed November 29, 2004.

Signed Tom Hunter Title Plumas Co. Engineer



County Surveyor's Comment _____

- FOUND open 3/4" I.I. per 2 RS 44 & 45
- ⊗ SET 5/8" Rebar & Alum Cap LS 2843 Witness corners
- Nothing found or set (R1) RECORD per 2 RS 44
- FOUND point as described (M) Measured
- SET Spike



1" = 100'

Centerline of creek

PARCEL 11
 Per 2 RS 44
 Por. Section 22
 T.24N.R.8E. M.D.M.
 Plumas County, Ca.

Hamby Surveying Inc.
 P.O. Box 1209
 Portola, CA 96122
 (530) 832-5571