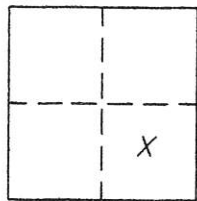


CORNER RECORD

Document Number 275

Portion Section 36 T.23N.R.13E. MDM County of Plumas, California

Brief Legal Description Lots 8,9 & 10 Block 16, Northern Addition to Portola A Maps 32



CORNER TYPE

Government Corner Control
Meander Property
Rancho Other
Date of Survey Oct. 27, 2004

COORDINATES (Optional)

N. _____
E. _____
Zone _____ Datum _____
Elev. _____

Corner- Left as found Found and tagged Established Reestablished Rebuilt

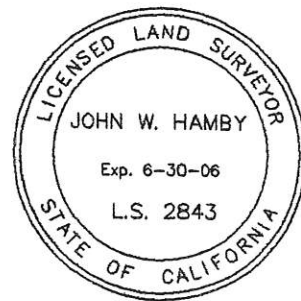
Identification and type of corner found; Evidence used to identify or procedure used to establish or reestablish the corner:
Found points as shown on the attached sketch in good condition and in proper locations.
Found points are in locations shown on A Maps 32. Points as indicated are open
pipe or rebar without plugs or tags and do not appear on record maps.

A description of the physical condition of the monument as found and as set or reset:
Set 5/8" rebar with aluminum caps stamped LS 2843 as shown on attached sketch
in position shown on the Map of Northern Addition to Portola filed in Book A page 32
Plumas County Records.

SURVEYOR'S STATEMENT

This Corner Record was prepared by me or under my direction in conformance with the Land Surveyors' Act on October 27, 2004.

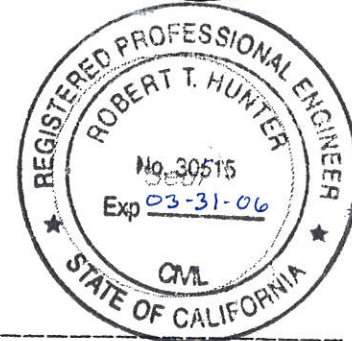
Signed John W. Hamby L.S. 2843
John W. Hamby



COUNTY SURVEYOR'S STATEMENT

This Corner Record was received Nov. 1st 2004 and examined and filed November 29, 2004.

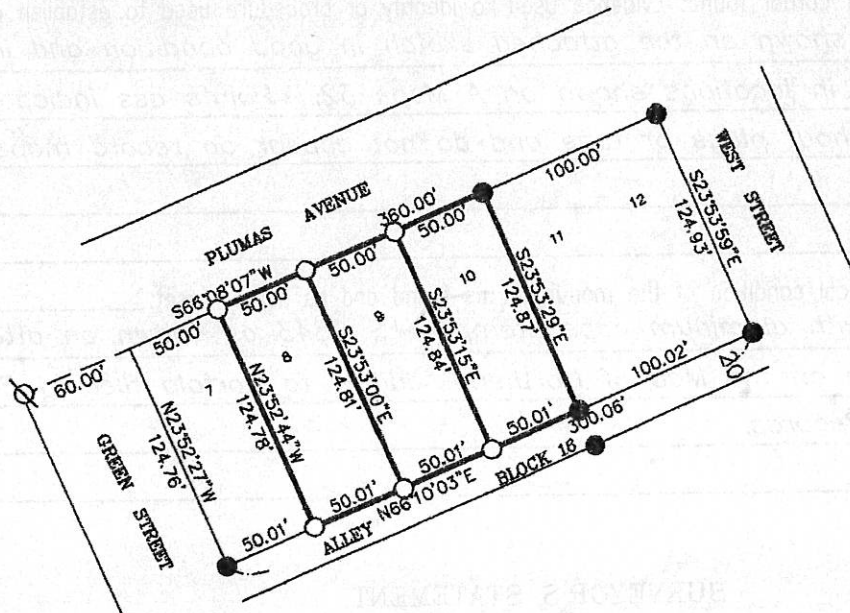
Signed Tom Hunter Title Engineer



County Surveyor's Comment _____

LEGEND

- FOUND 1/2" I.P. open, not on record.
- Set 5/8" rebar with aluminum cap stamped LS 2843
- ⊗ Found 5/8" Rebar not on record.



Lots 8,9 & 10

Block 16

Northern Addition to Portola

Book A page 32

Portola, Plumas County, California

Scale 1" = 100' October, 2004

Hamby Surveying Inc.
P.O. Box 1209
Portola, CA 96122
(530) 832-5571

04276