

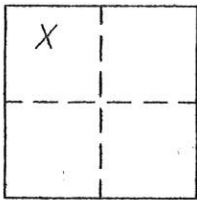
CORNER RECORD

Document Number 276

Por. Sec. 17 T.23N..R.14E. MDM

County of Plumas, California

Brief Legal Description Lot 21 Grizzly Creek Acres per 2 RS 13



CORNER TYPE

Government Corner Control
Meander Property
Rancho Other
Date of Survey OCT. 27, 2004

COORDINATES (Optional)

N. _____
E. _____
Zone _____ Datum _____
Elev. _____

Corner- Left as found Found and tagged Established Reestablished Rebuilt

Identification and type of corner found: Evidence used to identify or procedure used to establish or reestablish the corner:
Found points as indicated on the attached sketch and as shown on 13 RS 62.

A description of the physical condition of the monument as found and as set or reset:
Set 5/8" Rebar with aluminum cap stamped LS 2843 WC at locations shown on 2 RS 13.

SURVEYOR'S STATEMENT

This Corner Record was prepared by me or under my direction in conformance with the Land Surveyors' Act on October 27, 2004

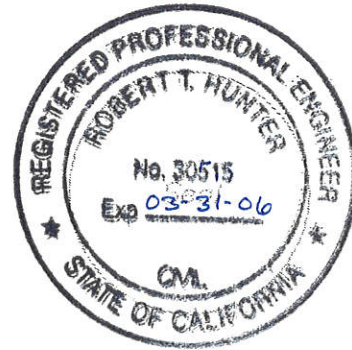
Signed John W. Hamby L.S. 2843
John W. Hamby



COUNTY SURVEYOR'S STATEMENT

This Corner Record was received Nov. 1st 2004 and examined and filed November 29, 2004.

Signed Tom Hunter Title _____



County Surveyor's Comment _____

● FOUND open 1/2" I.P. per 13 RS 62

○ SET 5/8" Rebar & Aluminum Cap LS 2843 W C

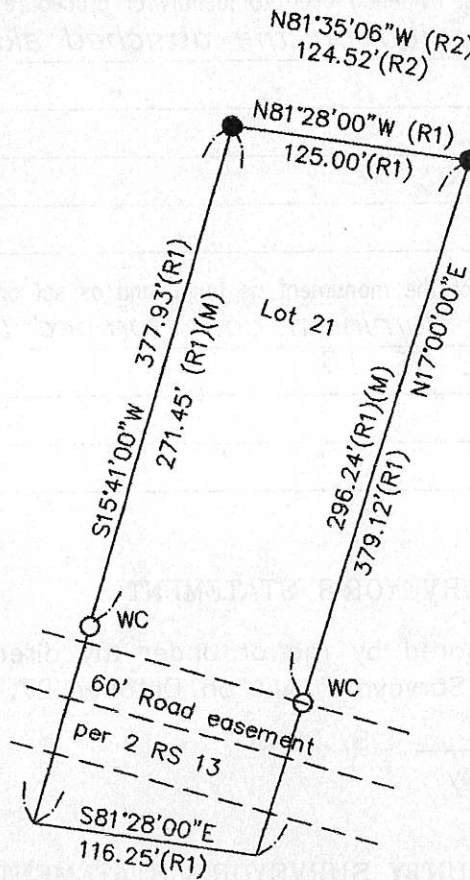
(R1) Record per 2 RS 13

(R2) Rewcord per 13 RS 62

(M) Measured



APN 128-170-004



Lot 21
GRIZZLY CREEK ACRES
2 RS 13

Plumas County, California
Scale 1"=100' Oct. 2004

Hamby Surveying Inc.
P.O. Box 1209
Portola, CA 96122
(530) 832-5571