

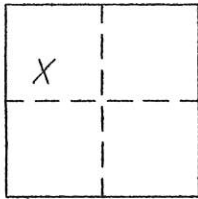
CORNER RECORD

Document Number 277

Section 1, T.22N.R.13E. MDM

County of Plumas, California

Brief Legal Description Lot 51 Ridgewood Subdivision Unit No 1, 5 Maps 45, 46



CORNER TYPE

Government Corner  Control   
Meander  Property   
Rancho  Other   
Date of Survey April 12, 2004

COORDINATES

(Optional)  
N. \_\_\_\_\_  
E. \_\_\_\_\_  
Zone \_\_\_\_\_ Datum \_\_\_\_\_  
Elev. \_\_\_\_\_

Corner- Left as found  Found and tagged  Established  Reestablished  Rebuilt

Identification and type of corner found: Evidence used to identify or procedure used to establish or reestablish the corner:  
found corner monuments indicated in good condition and in record locations.

A description of the physical condition of the monument as found and as set or reset:  
Set 5/8" rebar with aluminum cap LS 2843 at location indicated

SURVEYOR'S STATEMENT

This Corner Record was prepared by me or under my direction in conformance with the Land Surveyors' Act on April 12, 2004.

Signed John W. Hamby L.S. 2843  
John W. Hamby



COUNTY SURVEYOR'S STATEMENT

This Corner Record was received Nov. 1st 2004 and examined and filed November 29, 2004.

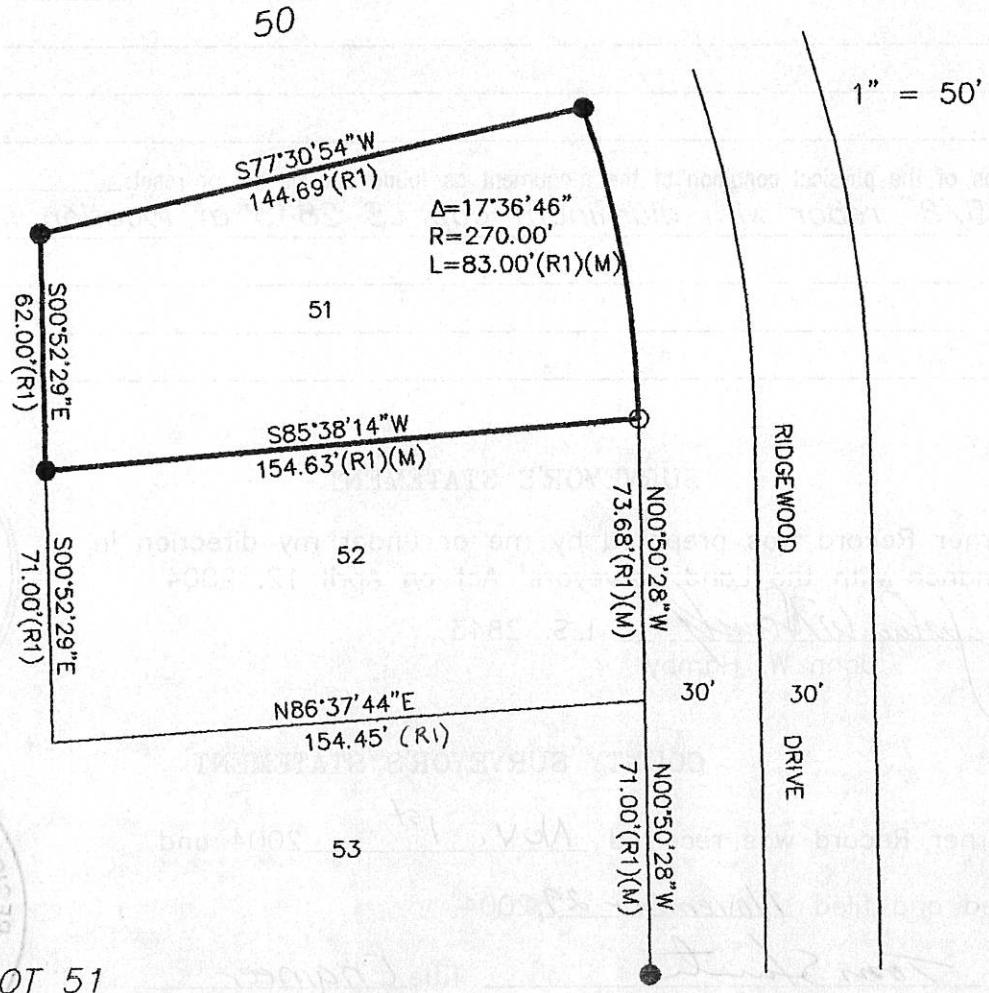
Signed Tom Smith Title Engineer



County Surveyor's Comment \_\_\_\_\_

- FOUND 1/2" Rebar with Plastic Cap LS 3297
- SET 5/8" Rebar & Aluminum Cap LS 2843
- (R1) Record per 5 M 45
- (M) Measured

A.P.N. 126-184-011



LOT 51

RIDGEWOOD SUBDIVISION  
 BOOK 5 MAPS 45 & 46  
 SECTION 1 T.22N.R.13E.  
 M.D.M.

Hamby Surveying Inc.  
 P.O. Box 1209  
 Portola, CA 96122  
 (530) 832-5571