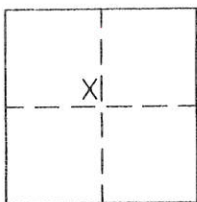


CORNER RECORD

Document Number 279

Portion Section 36, T23N.R.13E. MDM County of Plumas, California

Brief Legal Description Lots 2 & 3 Block 20, Northern Addition to Portola, Book A page 32



CORNER TYPE

- Government Corner Control
- Meander Property
- Rancho Other
- Date of Survey _____

COORDINATES (Optional)

N. _____
 E. _____
 Zone _____ Datum _____
 Elev. _____

Corner— Left as found Found and tagged Established Reestablished Rebuilt

Identification and type of corner found: Evidence used to identify or procedure used to establish or reestablish the corner:
Found points as indicated on attached sketch. Two points, not of record were in
positions shown. SW corner of Block was destroyed by fence construction and was
replaced as indicated in position shown on 9 PM 8.

A description of the physical condition of the monument as found and as set or reset:
All found monuments, except those mentioned above were in good condition.

SURVEYOR'S STATEMENT

This Corner Record was prepared by me or under my direction in conformance with the Land Surveyors' Act on Nov. 8, 2004.

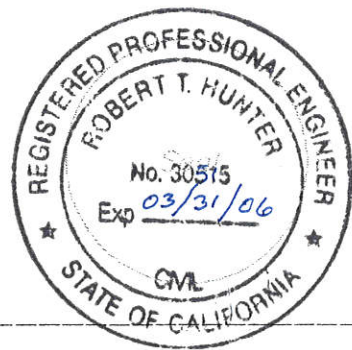
Signed John W. Hamby L.S. 2843
John W. Hamby



COUNTY SURVEYOR'S STATEMENT

This Corner Record was received Nov. 18th, 2004 and examined and filed 1/11 2005 2004.

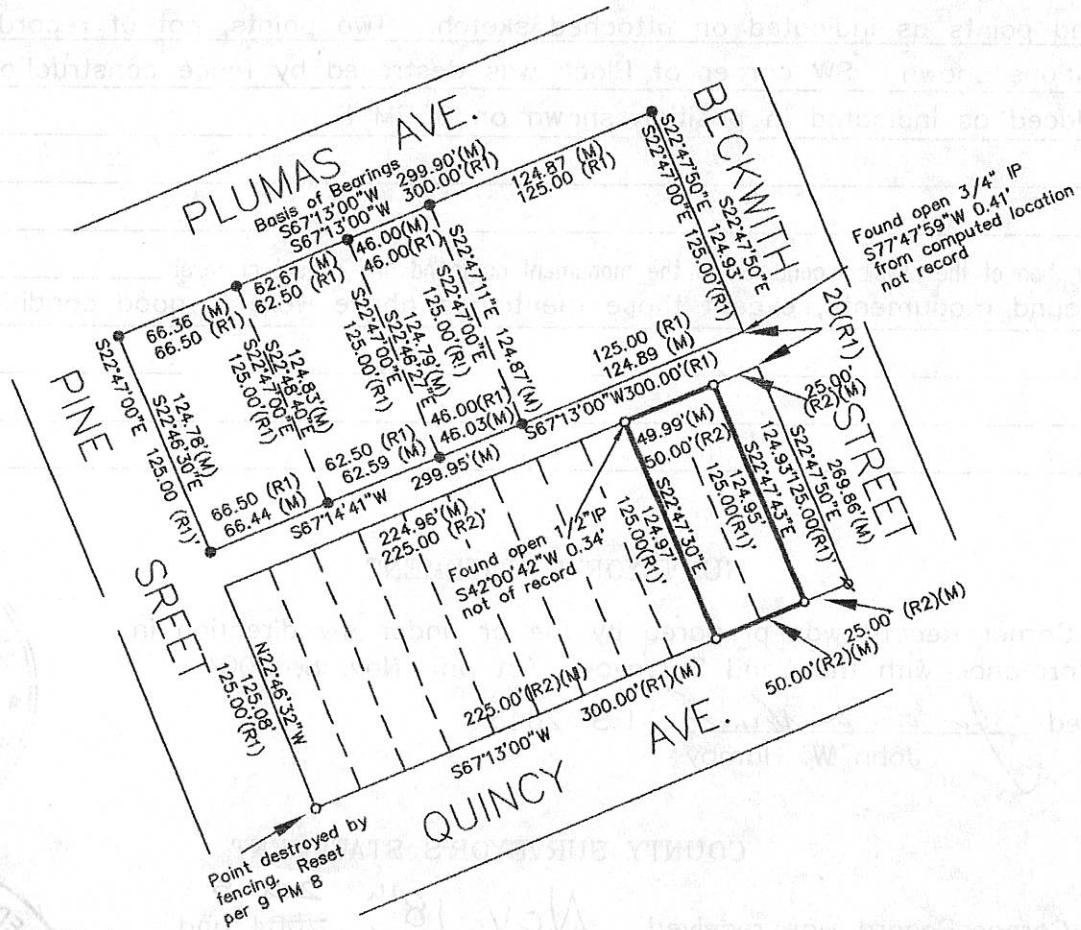
Signed R Tom Stanta Title Plumas Co. Engineer



County Surveyor's Comment _____

LEGEND

- FOUND Rebar with Plastic Cap LS 2843
- SET 5/8" Rebar & Aluminum Cap LS 2843
- ⊗ FOUND Rebar with Aluminum Cap LS 2843 per 9 PM 8
- (R1) RECORD per 9 PM 8
- (R2) RECORD per A RM 32.
- (M) Measured



Portion of Block 20
Northern Addition to Portola

Portola — Plumas County — Calif.
Scale 1"=100' November 2004

Hamby Surveying Inc.
P.O. Box 1209
Portola, CA 96122
(530) 832-5571

04238