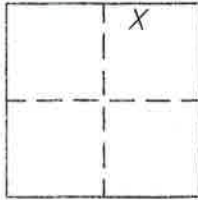


CORNER RECOR.

Document Number 280

Portion Section 20, T.24N.R.15E.,M.D.M. County of Plumas, California

Brief Legal Description Portion Lot 47, Dixie Valley Properties per 4 M 5 - 13



CORNER TYPE

COORDINATES

(Optional)

Government Corner  Control   
Meander  Property   
Rancho  Other   
Date of Survey Nov. 23, 2004

N. \_\_\_\_\_  
E. \_\_\_\_\_  
Zone \_\_\_\_\_ Datum \_\_\_\_\_  
Elev. \_\_\_\_\_

Corner- Left as found  Found and tagged  Established  Reestablished  Rebuilt

Identification and type of corner found: Evidence used to identify or procedure used to establish or reestablish the corner:  
Points indicated as found were in good condition. Point indicated as set was set in record location which fell next to a fence. Forest Service set a new 1/4 corner just North of the one shown, but we held the original monument as an original monument.

A description of the physical condition of the monument as found and as set or reset: \_\_\_\_\_  
Set a 5/8" rebar with cap stamped LS2843 as indicated on attached sketch.

SURVEYOR'S STATEMENT

This Corner Record was prepared by me or under my direction in conformance with the Land Surveyors' Act on Nov. 23, 2004.

Signed John W. Hamby L.S. 2843  
John W. Hamby



COUNTY SURVEYOR'S STATEMENT

This Corner Record was received Jan. 04 <sup>2005</sup>/<sub>2004</sub> and examined and filed January 11 <sup>2005</sup>/<sub>2004</sub>.

Signed R. Tom Hunter Title Engineer

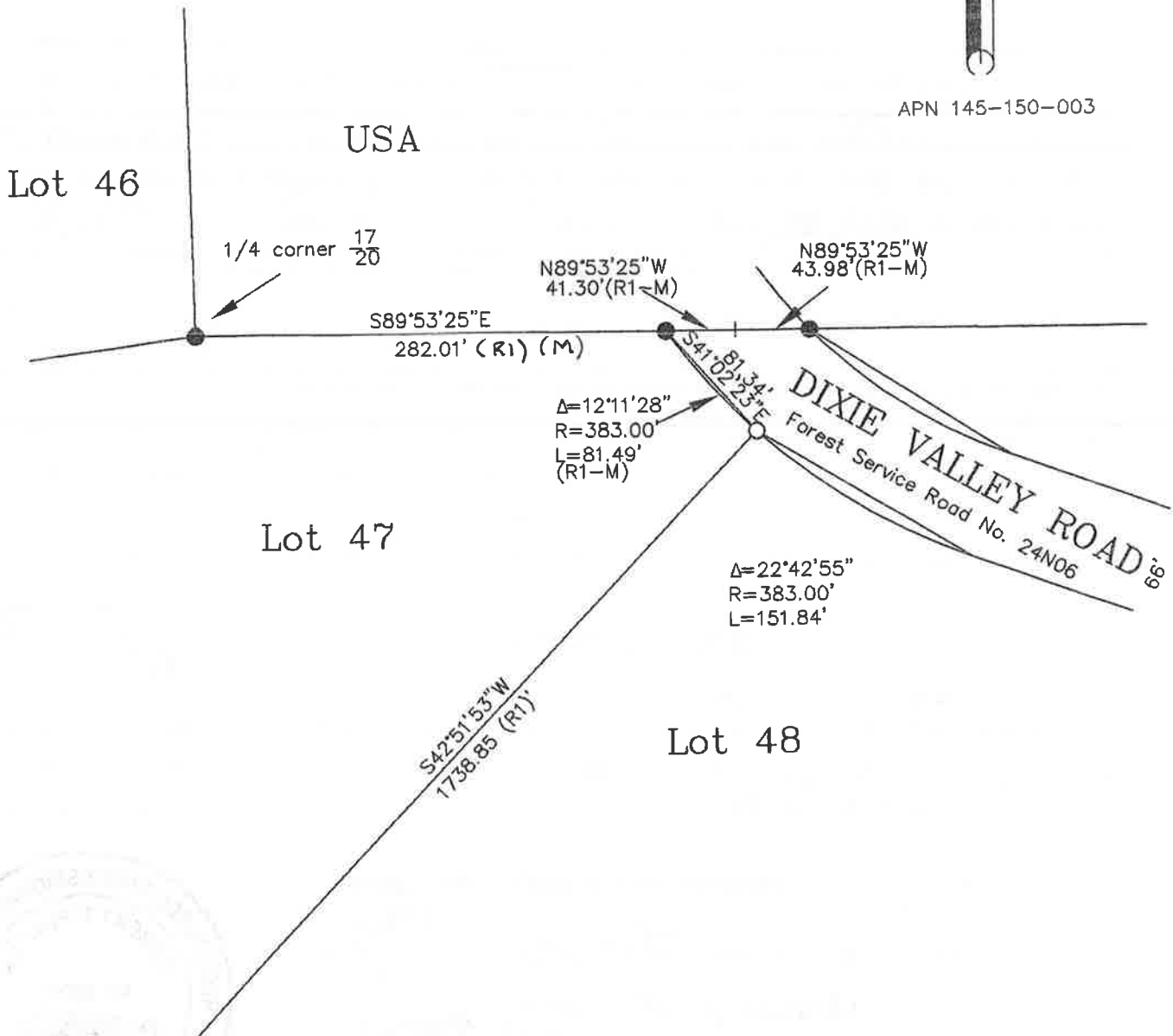


County Surveyor's Comment \_\_\_\_\_

- FOUND 3/4" rebar per (R1)
  - SET 5/8" Rebar & Aluminum Cap LS 2843
- (R1) RECORD per 4 M 5  
 (M) Measured



APN 145-150-003



Portion Lot 47  
 Dixie Valley Properties  
 Unit No. 1 4 M 5 - 13  
 Portion Section 20, T.24N.R.15E. MDM  
 Plumas County, Calif.  
 Scale 1"=100' Dec. 1 2004

Hamby Surveying Inc.  
 P.O. Box 1209  
 Portola, CA 96122  
 (530) 832-5571

04243