

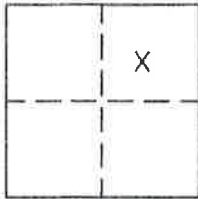
CORNER RECORD

Document Number 281

Section 10, T.22N.,R.13E., M.D.M.

County of Plumas, California

Brief Legal Description Lot 26, Iron Horse Subdivision per 3 M 110



CORNER TYPE

Government Corner  Control   
Meander  Property   
Rancho  Other   
Date of Survey Dec. 13, 2004

COORDINATES

(Optional)  
N. \_\_\_\_\_  
E. \_\_\_\_\_  
Zone \_\_\_\_\_ Datum \_\_\_\_\_  
Elev. \_\_\_\_\_

Corner- Left as found  Found and tagged  Established  Reestablished  Rebuilt

Identification and type of corner found: Evidence used to identify or procedure used to establish or reestablish the corner:  
Found points indicated on attached sketch in good condition and in record position.  
Set 5/8" rebar with Aluminum cap stamped LS 2843 at location for missing corner.

A description of the physical condition of the monument as found and as set or reset:  
see above

SURVEYOR'S STATEMENT

This Corner Record was prepared by me or under my direction in conformance with the Land Surveyors' Act on December 13, 2004.

Signed John W. Hamby L.S. 2843  
John W. Hamby



COUNTY SURVEYOR'S STATEMENT

This Corner Record was received Jan. 6 <sup>2005</sup> ~~2004~~ and  
examined and filed January 14 <sup>2005</sup> ~~2004~~.

Signed R. Tom Hunter Title Plumas Co. Engineer

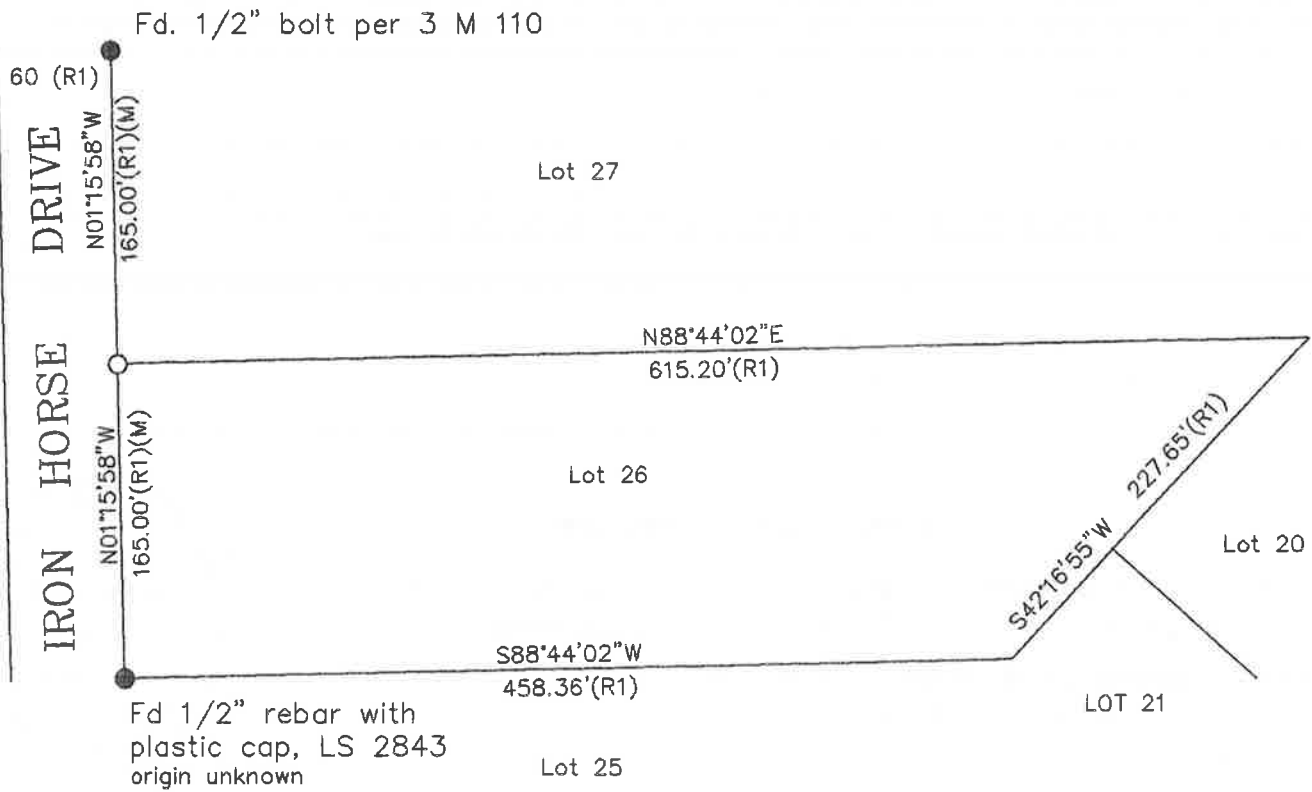


County Surveyor's Comment \_\_\_\_\_

- FOUND point as described
  - SET 5/8" Rebar & Aluminum Cap LS 2843
- (R1) RECORD per 3 M 110.  
(M) Measured



APN 126-043-005



**LOT 26  
IRON HORSE RANCHO SUB.**

Book 3 Maps page 110  
Portion Sec. 10, T.22N.R.13E. MDM  
Plumas County, Calif  
Scale 1"=100' December, 2004

Hamby Surveying Inc.  
P.O. Box 1209  
Portola, CA 96122  
(530) 832-5571