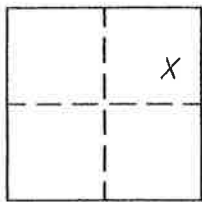


CORNER RECORD

Document Number 282

Portion NE 1/4 Section 36, T.23N.R.13E. County of Plumas, California

Brief Legal Description Lot 9 Block 50 Second North Addition to Portola Townsite
Book A Maps page 30.



CORNER TYPE

Government Corner Control
Meander Property
Rancho Other
Date of Survey May 28, 2004

COORDINATES
(Optional)

N. _____
E. _____
Zone _____ Datum _____
Elev. _____

Corner-- Left as found Found and tagged Established Reestablished Rebuilt

Identification and type of corner found: Evidence used to identify or procedure used to establish or reestablish the corner:
Found corners indicated in good condition. Found NE and SE corners of Lot 9
per corner record #200 destroyed by construction and replaced with rebar with
Aluminum cap stamped LS 2843.

A description of the physical condition of the monument as found and as set or reset:
see note above.

SURVEYOR'S STATEMENT

This Corner Record was prepared by me or under my direction in conformance with the Land Surveyors' Act on May 28, 2004.

Signed John W. Hamby L.S. 2843
John W. Hamby



3-22-05

COUNTY SURVEYOR'S STATEMENT

This Corner Record was received March 22nd, 2005 and examined and filed March 24th, 2005.

Signed Robert T. Hunter Title Engineer
Plumas County



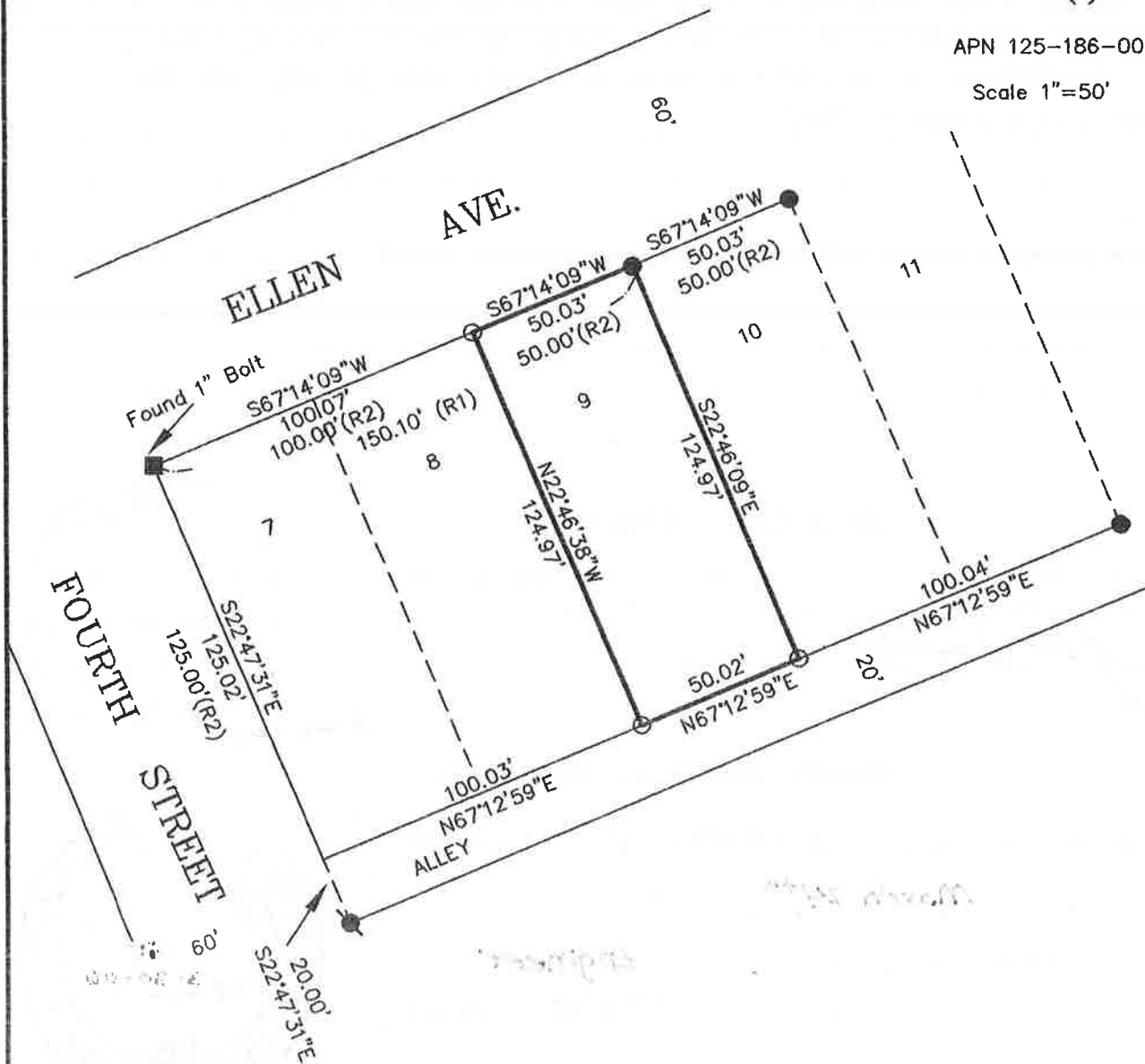
County Surveyor's Comment _____

- FOUND Rebar with Plastic Cap LS 6051, per corner record 200.
- FOUND 5/8" rebar with cap LS 2843 per corner record 200.
- FOUND point as described
- SET 5/8" Rebar & Plastic Cap LS 2843
- (R1) per corner record # 200
- (R2) per A Maps 30



APN 125-186-007

Scale 1"=50'



Lot 9 Block 50
 Second North Addition
 Portola Townsite
 A Maps 30

Hamby Surveying Inc.
 P.O. Box 1209
 Portola, CA 96122
 (530) 832-5571

04135