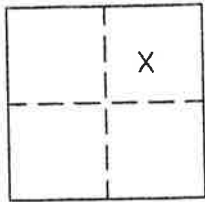


CORNER RECORD

Document Number 283

Section 10, T.22N.,R.13E., M.D.M. County of Plumas, California

Brief Legal Description Lot 26, Iron Horse Subdivision per 3 M 110



CORNER TYPE

Government Corner  Control   
Meander  Property   
Rancho  Other   
Date of Survey Dec. 13, 2004

COORDINATES (Optional)

N. \_\_\_\_\_  
E. \_\_\_\_\_  
Zone \_\_\_\_\_ Datum \_\_\_\_\_  
Elev. \_\_\_\_\_

Corner- Left as found  Found and tagged  Established  Reestablished  Rebuilt

Identification and type of corner found: Evidence used to identify or procedure used to establish or reestablish the corner:  
Found points indicated on attached sketch in good condition and in record position.  
Set 5/8" rebar with Aluminum cap stamped LS 2843 at location for missing corner.

A description of the physical condition of the monument as found and as set or reset: \_\_\_\_\_  
see above

SURVEYOR'S STATEMENT

This Corner Record was prepared by me or under my direction in conformance with the Land Surveyors' Act on December 13, 2004.

Signed J.W. Hamby L.S. 2843  
John W. Hamby



COUNTY SURVEYOR'S STATEMENT

This Corner Record was received Feb. 18, 2005 and examined and filed March 24<sup>th</sup>, 2005

Signed R. Tom Hunter Title Engineer  
Plumas County

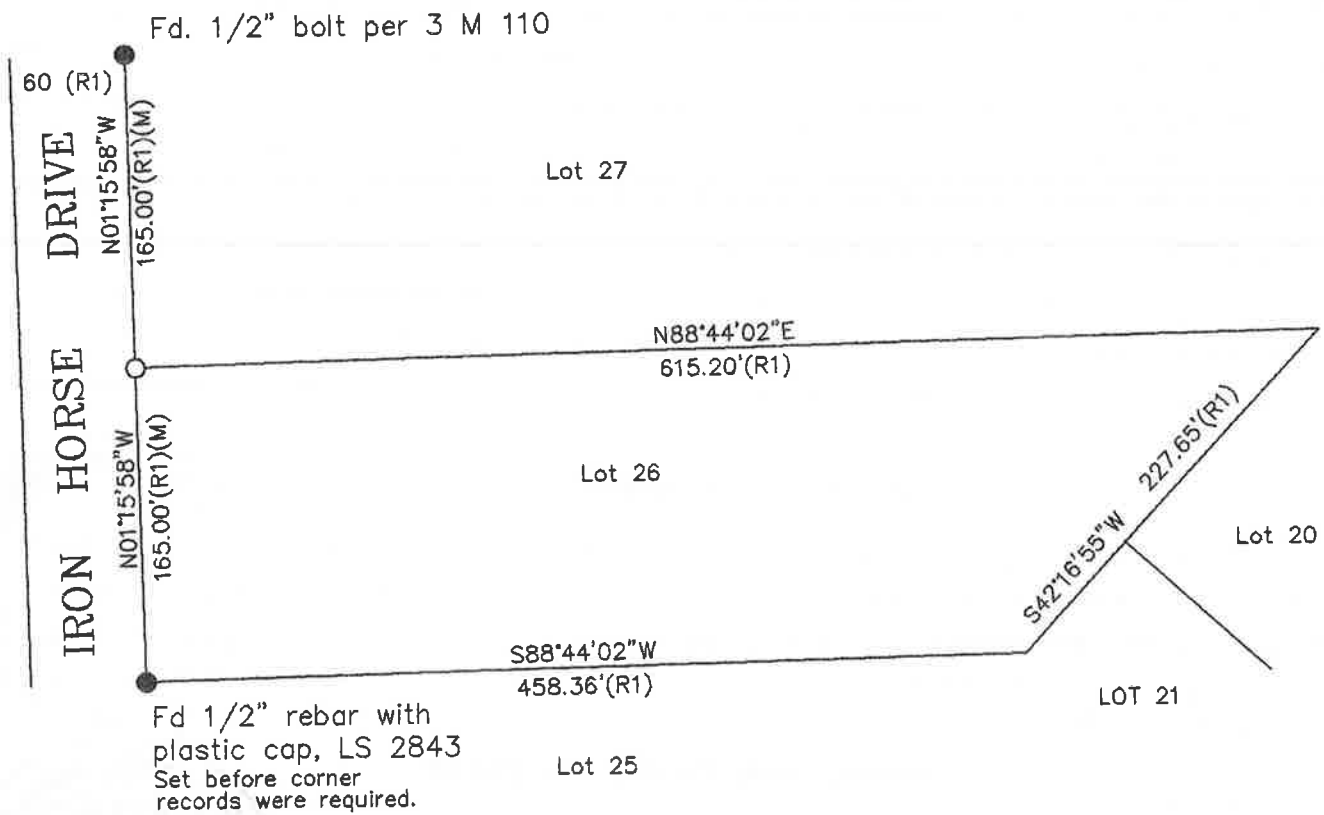


County Surveyor's Comment \_\_\_\_\_

- FOUND point as described
  - SET 5/8" Rebar & Aluminum Cap LS 2843
- (R1) RECORD per 3 M 110.  
 (M) Measured



APN 126-043-005



Fd. 1/2" bolt per 3 M 110

60 (R1)

IRON HORSE DRIVE

N01°15'58"W

165.00'(R1)(M)

N01°15'58"W

165.00'(R1)(M)

Lot 27

N88°44'02"E

615.20'(R1)

Lot 26

S42°16'55"W 227.65'(R1)

Lot 20

S88°44'02"W

458.36'(R1)

LOT 21

Fd 1/2" rebar with plastic cap, LS 2843  
 Set before corner records were required.

Lot 25

**LOT 26  
 IRON HORSE RANCHO SUB.**

Book 3 Maps page 110  
 Portion Sec. 10, T.22N.R.13E. MDM  
 Plumas County, Calif  
 Scale 1"=100' December, 2004

Hamby Surveying Inc.  
 P.O. Box 1209  
 Portola, CA 96122  
 (530) 832-5571