

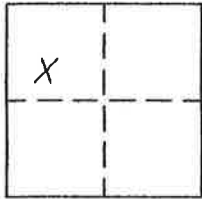
CORNER RECORD

Document Number 285

Section 1, T.22N.R.13E. MDM

County of Plumas, California

Brief Legal Description Lot 51 Ridgewood Subdivision Unit No 1, 5 Maps 45, 46



CORNER TYPE

Government Corner Control
Meander Property
Rancho Other
Date of Survey April 12, 2004

COORDINATES
(Optional)

N. _____
E. _____
Zone _____ Datum _____
Elev. _____

Corner— Left as found Found and tagged Established Reestablished Rebuilt

Identification and type of corner found: Evidence used to identify or procedure used to establish or reestablish the corner:
found corner monuments indicated in good condition and in record locations.

A description of the physical condition of the monument as found and as set or reset:
Set 5/8" rebar with aluminum cap LS 2843 at location indicated

SURVEYOR'S STATEMENT

This Corner Record was prepared by me or under my direction in conformance with the Land Surveyors' Act on April 12, 2004.

Signed JW Hamby L.S. 2843
John W. Hamby



COUNTY SURVEYOR'S STATEMENT

This Corner Record was received April 8th 2005 and examined and filed May 31 2005.

Signed R Tom Hunter Title Engineer



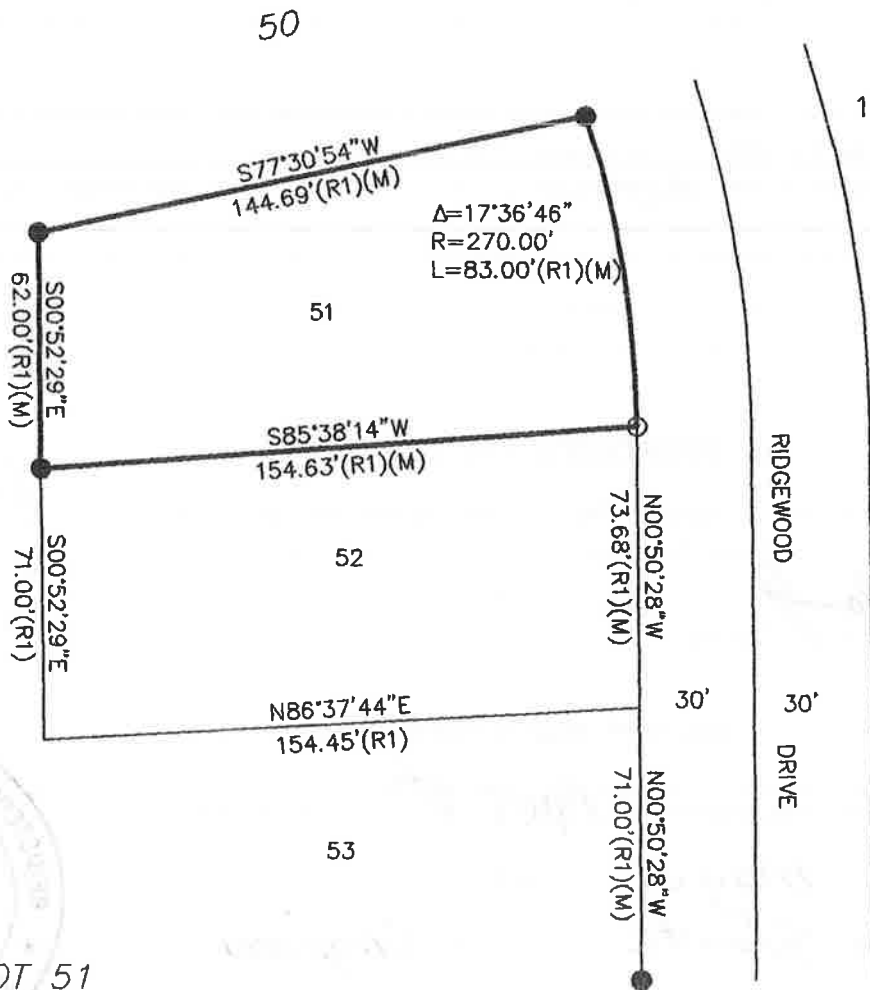
County Surveyor's Comment _____

- FOUND 1/2" Rebar with Plastic Cap LS 3297
 - SET 5/8" Rebar & Aluminum Cap LS 2843
- (R1) Record per 5 M 45
(M) Measured

A.P.N. 126-184-011



1" = 50'



LOT 51

RIDGEWOOD SUBDIVISION
BOOK 5 MAPS 45 & 46
SECTION 1 T.22N.R.13E.
M.D.M.

Hamby Surveying Inc.
P.O. Box 1209
Portola, CA 96122
(530) 832-5571