

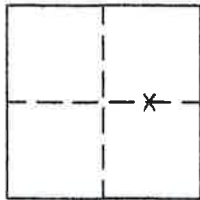
CORNER RECORD

Document Number 286

Portion Section 22, T.22N.R.12E. DM

County of San Diego, California

Brief Legal Description Lot 8 Graeagle Subdivision No. 5 3 Maps 102 - 104



CORNER TYPE

Government Corner Control
 Meander Property
 Rancho Other
 Date of Survey Sept. 20, 2003

COORDINATES (Optional)

N. _____
 E. _____
 Zone _____ Datum _____
 Elev. _____

Corner— Left as found Found and tagged Established Reestablished Rebuilt

Identification and type of corner found: Evidence used to identify or procedure used to establish or reestablish the corner:
Found corners indicated in good condition.

A description of the physical condition of the monument as found and as set or reset: _____
Northwest corner of Lot fell in a tree. Set Witness corner 5.00 feet, on line.

SURVEYOR'S STATEMENT

This Corner Record was prepared by me or under my direction in conformance with the Land Surveyors' Act on September 20, 2003.

Signed John W Hamby L.S. 2843
 John W. Hamby



COUNTY SURVEYOR'S STATEMENT

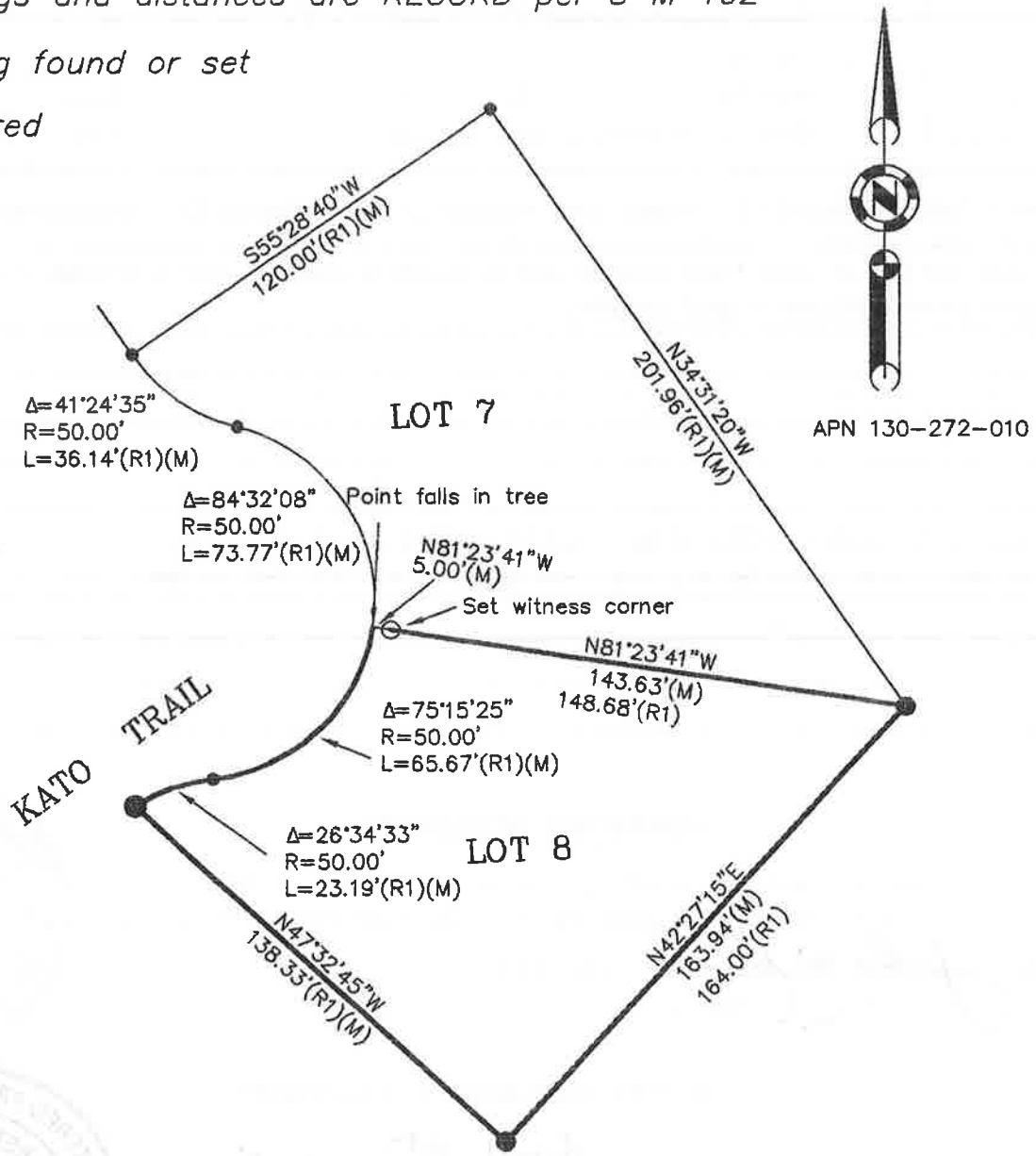
This Corner Record was received April 8th 2005 and examined and filed May 31, 2005.

Signed R Tom Stauber Title Engineer



County Surveyor's Comment _____

- FOUND 1/2" rebar per 3 M 102
- SET 5/8" Rebar & Plastic Cap LS 2843 (Witness corner)
- (R1) Bearings and distances are RECORD per 3 M 102
- Nothing found or set
- (M) Measured



GRAEAGLE SUBDIVISION No. 5

Portion of Section 22, T.22N.R.12E. MDM
 Plumas County, Ca.
 Scale 1" = 50' Sept. 2003

Hamby Surveying Inc.
 P.O. Box 1209
 Portola, CA 96122
 (530) 832-5571