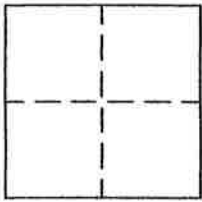


CORNER RECORD

Document Number 287

A Portion of Sec. 1 T. 22N., R. 13E., MDBM County of Plumas, California

Brief Legal Description Lot 33 5 M 45, Ridgewood Subdivision, Unit No. 1



CORNER TYPE

Government Corner Control
Meander Property
Rancho Other
Date of Survey August 2, 2002

COORDINATES (Optional)

N. _____
E. _____
Zone _____ Datum _____
Elev. _____

Corner— Left as found Found and tagged Established Reestablished Rebuilt

Identification and type of corner found: Evidence used to identify or procedure used to establish or reestablish the corner:
Found Monuments as shown on attached map, per 5 M 45.

A description of the physical condition of the monument as found and as set or reset:
Set Monuments as shown on attached map, per 5 M 45.

SURVEYOR'S STATEMENT

This Corner Record was prepared by me or under my direction in conformance with the Land Surveyors' Act on August 2, 2002.

Signed John W. Hamby L.S. 2843
John W. Hamby



COUNTY SURVEYOR'S STATEMENT

This Corner Record was received April 8th 2005 and examined and filed May 31, 2005.

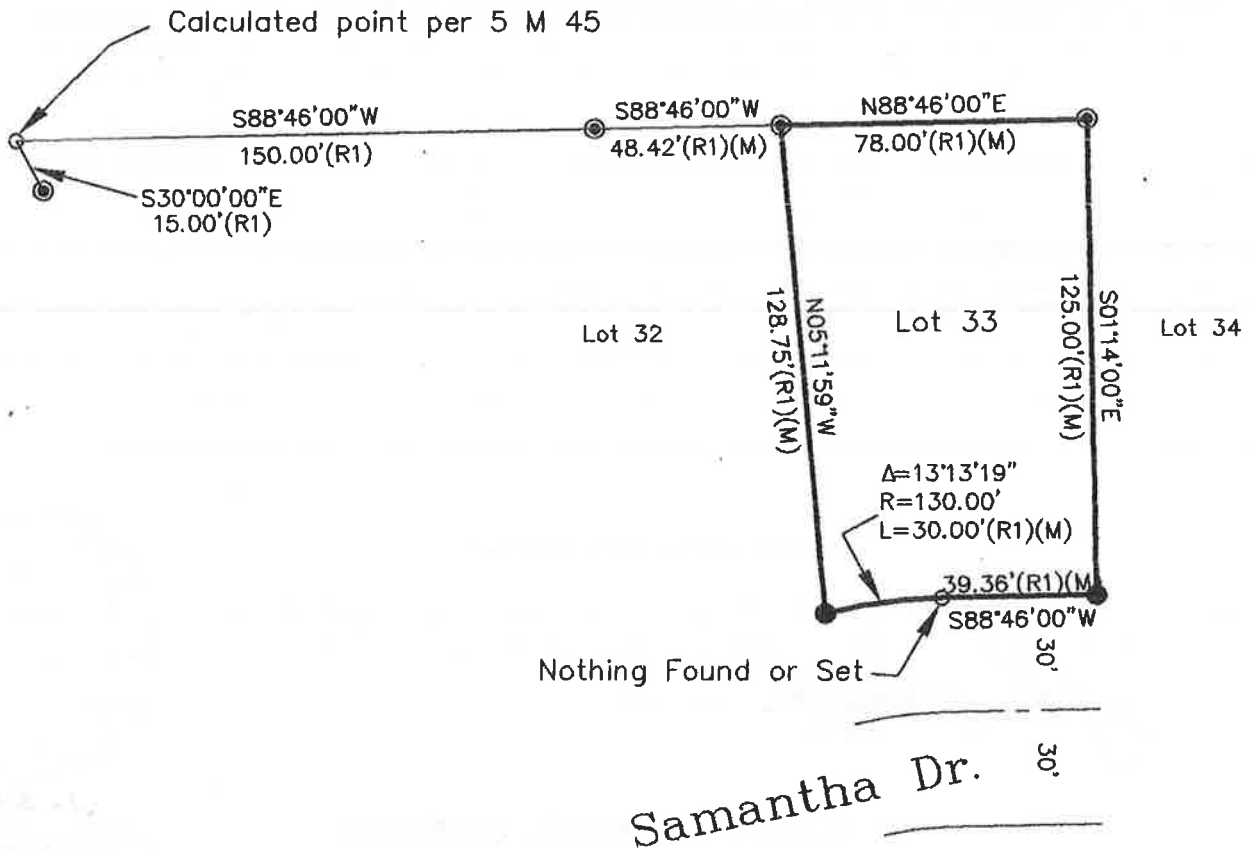
Signed R. Tom Hunter Title Engineer



County Surveyor's Comment _____



Scale 1" = 50'



LEGEND

- SET 5/8" Rebar with Aluminum Cap LS 2843
- FOUND 1/2" rebar with Plastic Cap LS 3297
- Described as noted.
- (R1) Record per 5 M 45
- (M) Measured

Hamby Surveying Inc.
P.O. Box 1209
Portola, CA 96122
(530) 832-5571