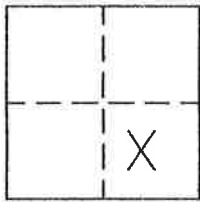


CORNER RECORD

Document Number 289

IN THE SE1/4 OF SEC. 10, T.22N., R.12E.,M.D.M. County of PLUMAS, California

Brief Legal Description A PORTION OF THE LOT SHOWN ON 5 RS 51 AND AS DESCRIBED IN 291 O.R. 91



CORNER TYPE

Government Corner Control
Meander Property
Rancho Other
Date of Survey JULY 28, 2003

COORDINATES (Optional)

N. _____
E. _____
Zone _____ Datum _____
Elev. _____

Corner— Left as found Found and tagged Established Reestablished Rebuilt

Identification and type of corner found: Evidence used to identify or procedure used to establish or reestablish the corner:
FOUND POINTS AS SHOWN AND DESCRIBED ON ATTACHED SKETCH AND AS SHOWN ON 5 RS 51 AND 12 RS 110.

A description of the physical condition of the monument as found and as set or reset:
FOUND POINTS AS DESCRIBED AND IN GOOD CONDITION. POINTS SET AS SHOWN ON ATTACHED SKETCH.

SURVEYOR'S STATEMENT

This Corner Record was prepared by me or under my direction in conformance with the Land Surveyors' Act on Sept. 24, 2003.

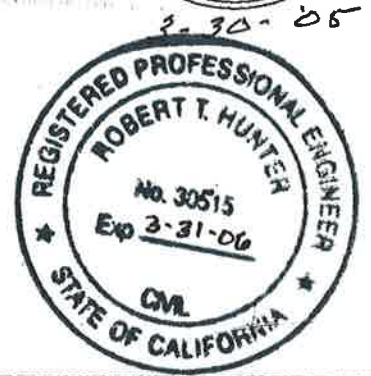
Signed John W. Hamby L.S. 2843
John W. Hamby



COUNTY SURVEYOR'S STATEMENT

This Corner Record was received April 8th 2005 and examined and filed May 31, 2005.

Signed Tom Hunter Title Engineer

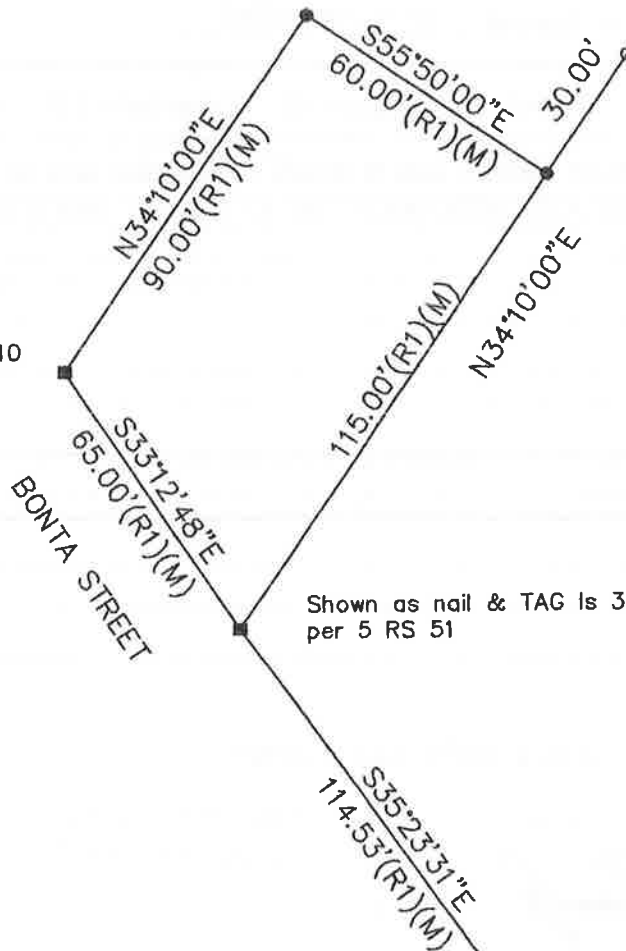


County Surveyor's Comment _____



1" = 40'

found PK nail
no record
per 12 RS 110
Calc. point
per 5 RS 51.



Shown as nail & TAG ls 3297
per 5 RS 51

Found 5/8" Rebar &
Plastic Cap LS 2843
(no record) per 12 RS 110
Calculated per 5 RS 51



LEGEND

- FOUND PK nail or as noted per 5 RS 51 & 12 RS 110.
- SET 5/8" Rebar & Aluminum Cap LS 2843
- NOTHING FOUND
- (R1) Record per 5 RS 51
- (M) Measured

Hamby Surveying Inc.
P.O. Box 1209
Portola, CA 96122
(530) 832-5571