

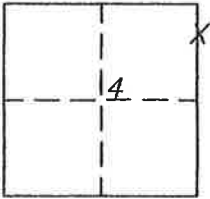
CORNER RECORD

Document Number 290

Portion Section 4, T.23N.R.10E. MDM

County of Plumas, California

Brief Legal Description Portion Section 4, T.23N.R.10E



CORNER TYPE

Government Corner Control
Meander Property
Rancho Other
Date of Survey October, 2003

COORDINATES
(Optional)

N. _____
E. _____
Zone _____ Datum _____
Elev. _____

Corner-- Left as found Found and tagged Established Reestablished Rebuilt

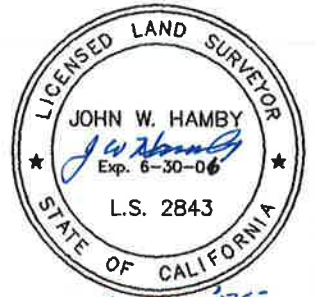
Identification and type of corner found: Evidence used to identify or procedure used to establish or reestablish the corner:
Found USFS monuments as shown on the attached Sketch and on 10 RS 73, and set the monument in the position shown per 10 RS 73.

A description of the physical condition of the monument as found and as set or reset:
Found the USFS monuments in good condition and as shown on 10 RS 73.

SURVEYOR'S STATEMENT

This Corner Record was prepared by me or under my direction in conformance with the Land Surveyors' Act on October 7, 2003.

Signed John W. Hamby L.S. 2843
John W. Hamby



COUNTY SURVEYOR'S STATEMENT

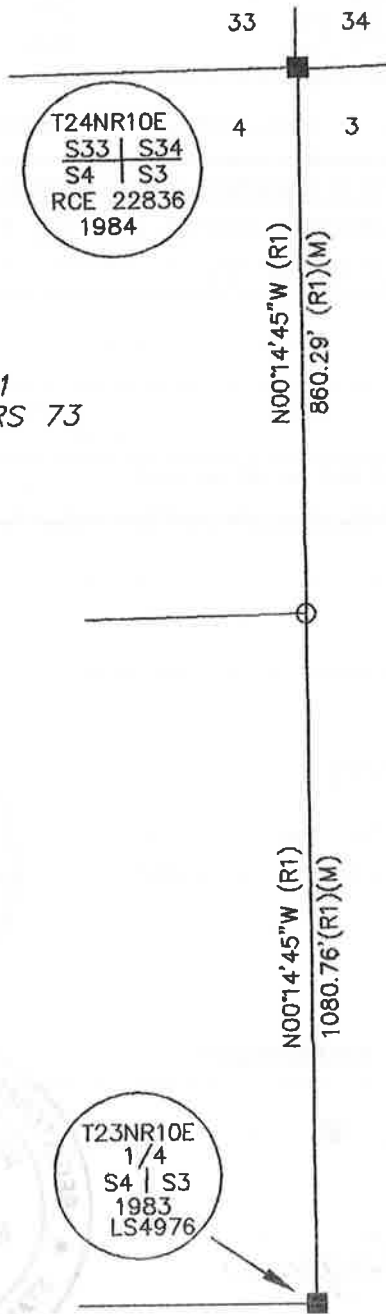
This Corner Record was received April 8th 2005 and examined and filed May 31, 2005.

Signed R Tom Hunter Title Engineer



County Surveyor's Comment _____

- FOUND USFS Aluminum Cap per 10 RS 73
- SET 5/8" Rebar & Aluminum Cap LS 2843
- (R1) RECORD per 10 RS 73

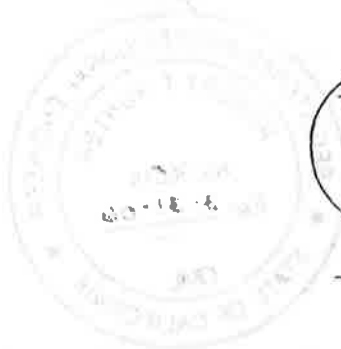


Lot 1
10 RS 73



Scale 1" = 300'

Portion Section 4
T.23N.R.10E MDM
Plumas County, Ca.
Scale 1" = 300'
November 2003



Hamby Surveying Inc.
P.O. Box 1209
Portola, CA 96122
(530) 832-5571