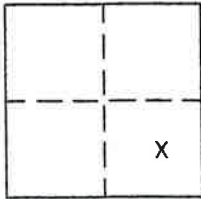


CORNER RECORD

Document Number 291

Portion Section 36, T.23N.R.13E. M.D.M. County of Plumas, California

Brief Legal Description Lots 1 & 2 Block 3, Northern Addition to Portola Townsite A Maps 32.



CORNER TYPE

Government Corner Control
Meander Property
Rancho Other
Date of Survey June 30, 2004

COORDINATES
(Optional)

N. _____
E. _____
Zone _____ Datum _____
Elev. _____

Corner— Left as found Found and tagged Established Reestablished Rebuilt

Identification and type of corner found: Evidence used to identify or procedure used to establish or reestablish the corner:

Found corners indicated in good condition.

A description of the physical condition of the monument as found and as set or reset: _____

Set 5/8" rebar with aluminum cap stamped LS 2843 at locations indicated on attached sketch.

SURVEYOR'S STATEMENT

This Corner Record was prepared by me or under my direction in conformance with the Land Surveyors' Act on June 30, 2004.

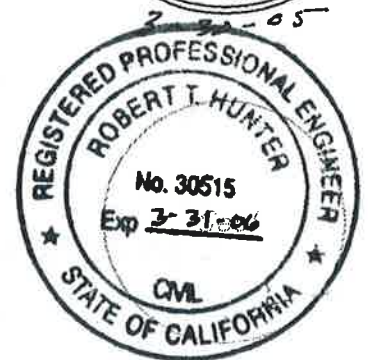
Signed John W. Hamby L.S. 2843
John W. Hamby



COUNTY SURVEYOR'S STATEMENT

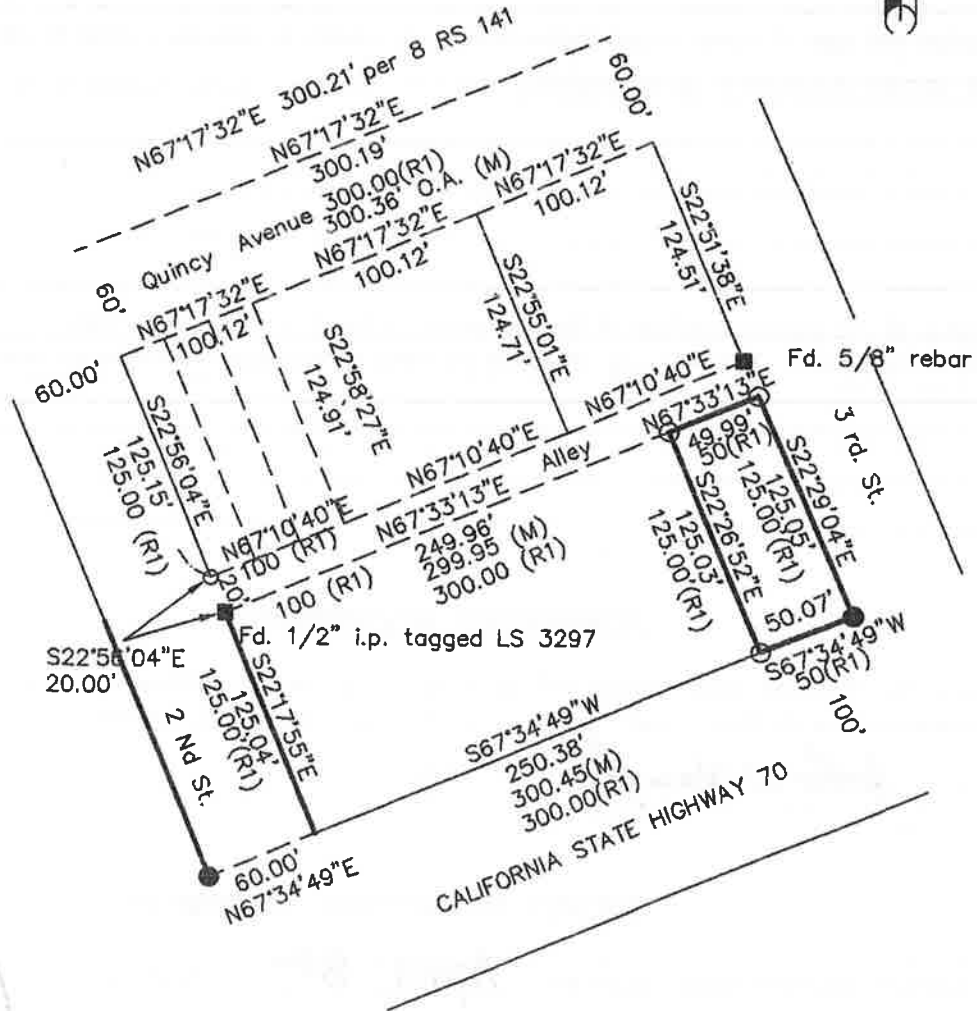
This Corner Record was received April 8th 2005 and examined and filed May 31 2005.

Signed R. Tom Hunter Title Engineer



County Surveyor's Comment _____

- FOUND point as described NOT OF RECORD
 - FOUND open 3/4" I.P. not of record
 - SET 5/8" Rebar & Plastic Cap LS 2843
- (R1) A Maps 32.
(M) Measured



PORTION BLOCK 3
NORTHERN ADD. TO PORTOLA TOWNSITE

R.M. A PAGE 32
PORTOLA PLUMAS COUNTY CALIF.
SCALE 1"=100' JULY, 2004

Hamby Surveying Inc.
P.O. Box 1209
Portola, CA 96122
(530) 832-5571