

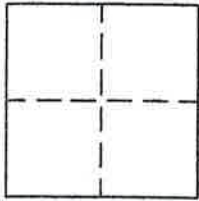
CORNER RECORD

Document Number 292

Section 8, T. 22 N., R. 12 E., M.D.M.

County of Plumas, California

Brief Legal Description Lot 20, Plumas Eureka Estates, Unit No. 7 (Phase I), 5 M 50  
see also 8 RS 148.



CORNER TYPE

Government Corner  Control   
Meander  Property   
Rancho  Other   
Date of Survey 9-16-03

COORDINATES  
(Optional)

N. \_\_\_\_\_  
E. \_\_\_\_\_  
Zone \_\_\_\_\_ Datum \_\_\_\_\_  
Elev. \_\_\_\_\_

Corner— Left as found  Found and tagged  Established  Reestablished  Rebuilt

Identification and type of corner found: Evidence used to identify or procedure used to establish or reestablish the corner:  
Found corners of Lot 20 as shown in sketch and set Northwest corner in record  
postion, next corner to West would be in drainage ditch and could not be found.

A description of the physical condition of the monument as found and as set or reset: Set 5/8" rebar with  
Aluminum Cap LS 2843 in record position.

SURVEYOR'S STATEMENT

This Corner Record was prepared by me or under my direction in conformance with the Land Surveyors' Act on September 17, 2003.

Signed John W Hamby L.S. 2843  
John W. Hamby



3-30-08

COUNTY SURVEYOR'S STATEMENT

This Corner Record was received April 8<sup>th</sup> 2005 and examined and filed May 31, 2005.

Signed R Tom Hunter Title Engineer

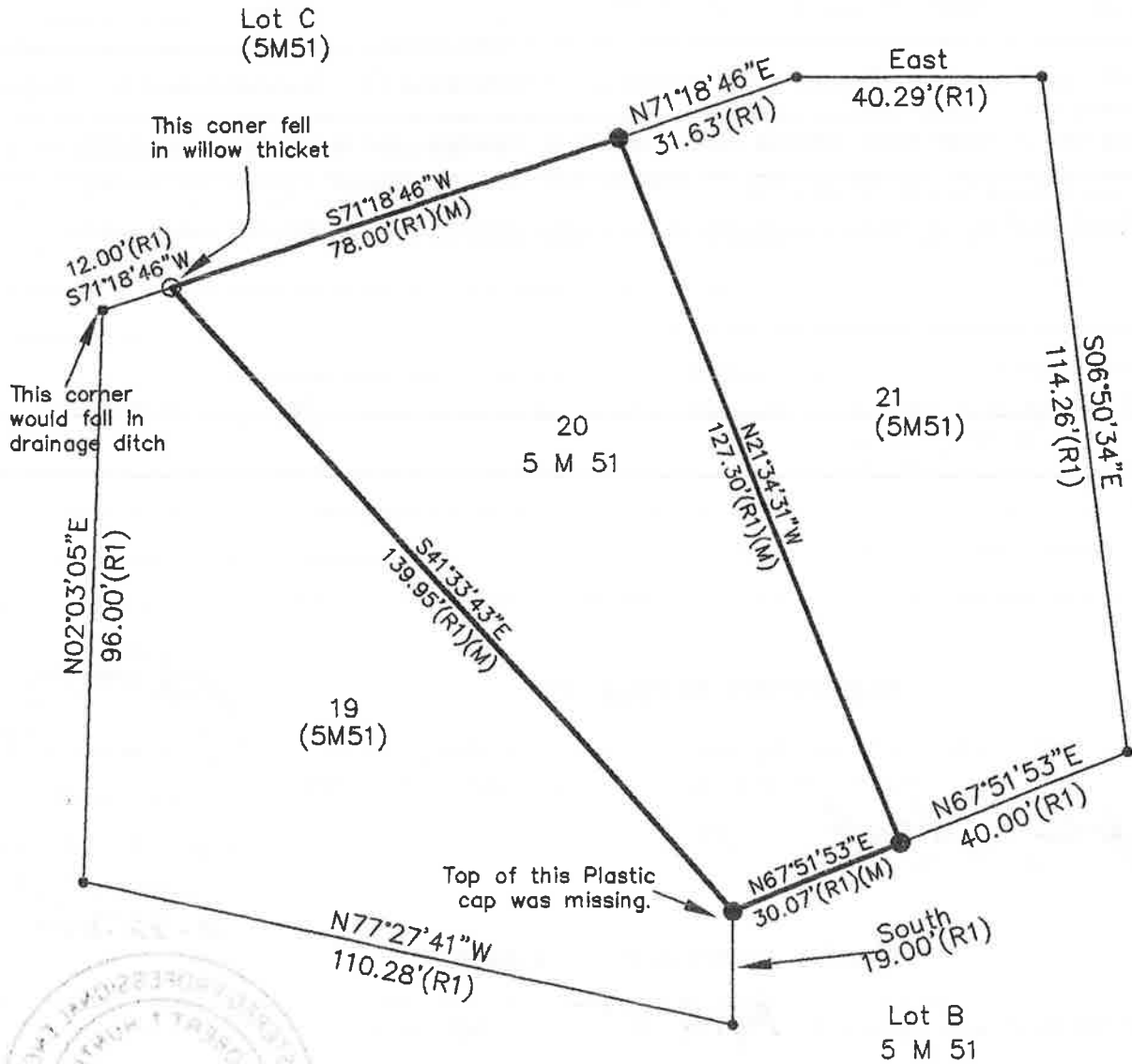


County Surveyor's Comment \_\_\_\_\_

# LEGEND

- FOUND 5/8" rebar with Plastic Cap LS 5055 per 8 RS 148.
- SET 5/8" Rebar with Aluminum Cap LS 2843
- Nothing Found or Set
- (R1) Record per 5 M 50.
- (M) Measured

Scale 1" = 30'



Lot 20, Plumas Eureka Estates  
Unit No. 7 (Phase I)

Hamby Surveying Inc.  
P.O. Box 1209  
Portola, CA 96122  
(530) 832-5571