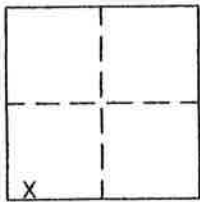


CORNER RECORD

Document Number 293

Portion Sec. 35 T.23N.R.13E & Sec.2 T.22N.R.13E. MDM County of Plumas, California

Brief Legal Description Parcel 2 per 4 PM 92



CORNER TYPE

Government Corner Control
Meander Property
Rancho Other
Date of Survey July 2004

COORDINATES (Optional)

N. _____
E. _____
Zone _____ Datum _____
Elev. _____

Corner— Left as found Found and tagged Established Reestablished Rebuilt

Identification and type of corner found: Evidence used to identify or procedure used to establish or reestablish the corner:
Found the points indicated of the attached sketch in good condition and in proper location.

A description of the physical condition of the monument as found and as set or reset:
Set point indicated which is a record location for a witness corner.

SURVEYOR'S STATEMENT

This Corner Record was prepared by me or under my direction in conformance with the Land Surveyors' Act on July 15, 2004.

Signed John W. Hamby L.S. 2843
John W. Hamby



3-30-05

COUNTY SURVEYOR'S STATEMENT

This Corner Record was received April 8th 2005 and examined and filed May 31 2005

Signed R. Tom Hunter Title Engineer



County Surveyor's Comment _____

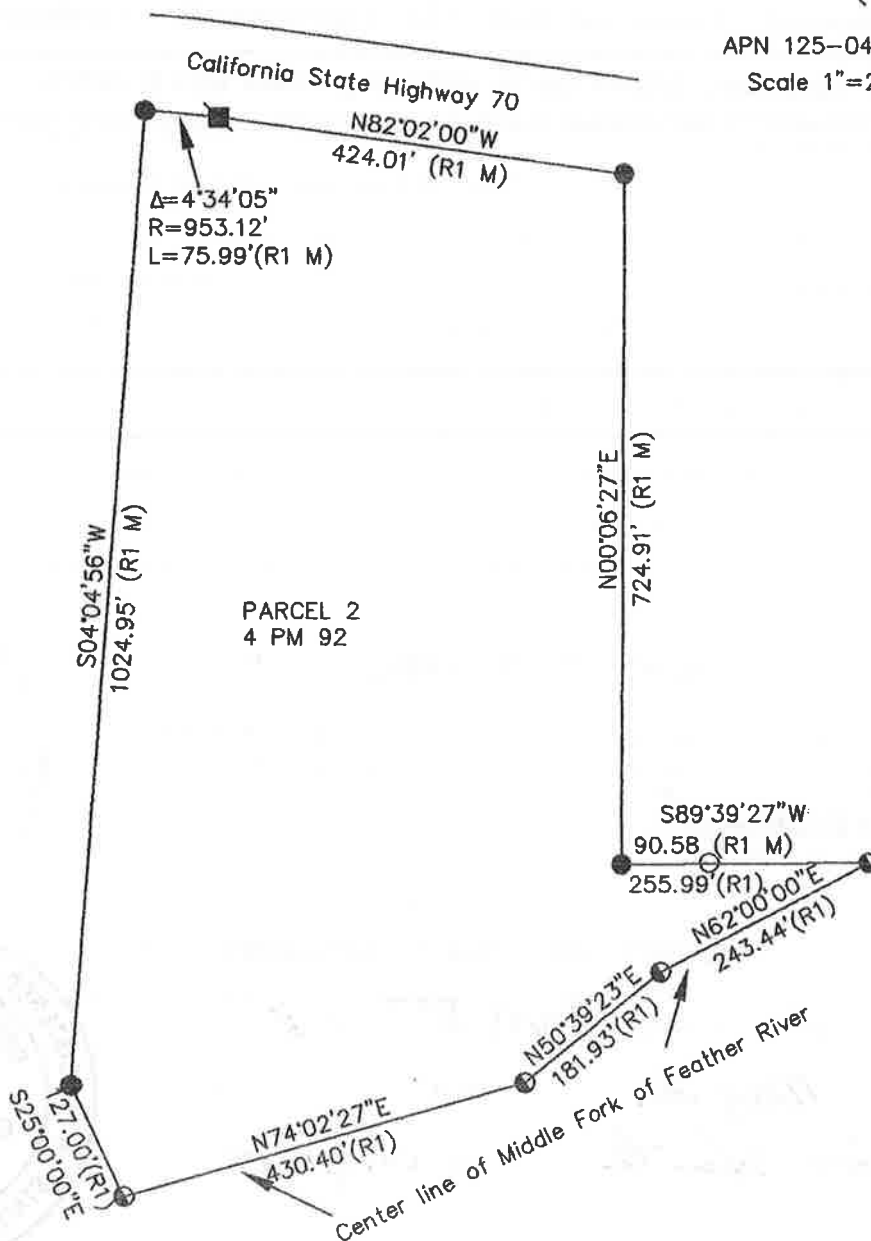
- FOUND 3/4" I.P. LS 3297
- SET 5/8" Rebar & Aluminum Cap LS 2843
- Record points (R1) nothing found or set
- FOUND 6" concrete Highway Monument

(R1) RECORD per 4 PM 92.

(M) Measured.



APN 125-040-025
Scale 1"=200'



00-18-6

Hamby Surveying Inc.
P.O. Box 1209
Portola, CA 96122
(530) 832-5571