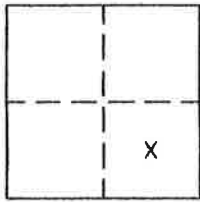


CORNER RECORD

Document Number 294

Within the SE 1/4 Section 36, T.23N.R.13E. M.D.M. County of Thomas, California

Brief Legal Description Lots 22,23 & 24 Block 2, Eastern Addition to Portola, Townsite Book A Maps page 27.



CORNER TYPE

Government Corner Control
Meander Property
Rancho Other
Date of Survey May 20, 2004

COORDINATES (Optional)

N. _____
E. _____
Zone _____ Datum _____
Elev. _____

Corner— Left as found Found and tagged Established Reestablished Rebuilt

Identification and type of corner found: Evidence used to identify or procedure used to establish or reestablish the corner:
The points found were as indicated on the attached sketch and were in good condition.

A description of the physical condition of the monument as found and as set or reset: _____
Set 5/8" rebar with aluminum cap stamped LS2843 as shown on attached sketch.

SURVEYOR'S STATEMENT

This Corner Record was prepared by me or under my direction in conformance with the Land Surveyors' Act on May 20, 2004.

Signed John W. Hamby L.S. 2843
John W. Hamby



4/07/05

COUNTY SURVEYOR'S STATEMENT

This Corner Record was received April 8th 2005 and examined and filed May 31, 2005.

Signed R. Tom Hunter Title Engineer



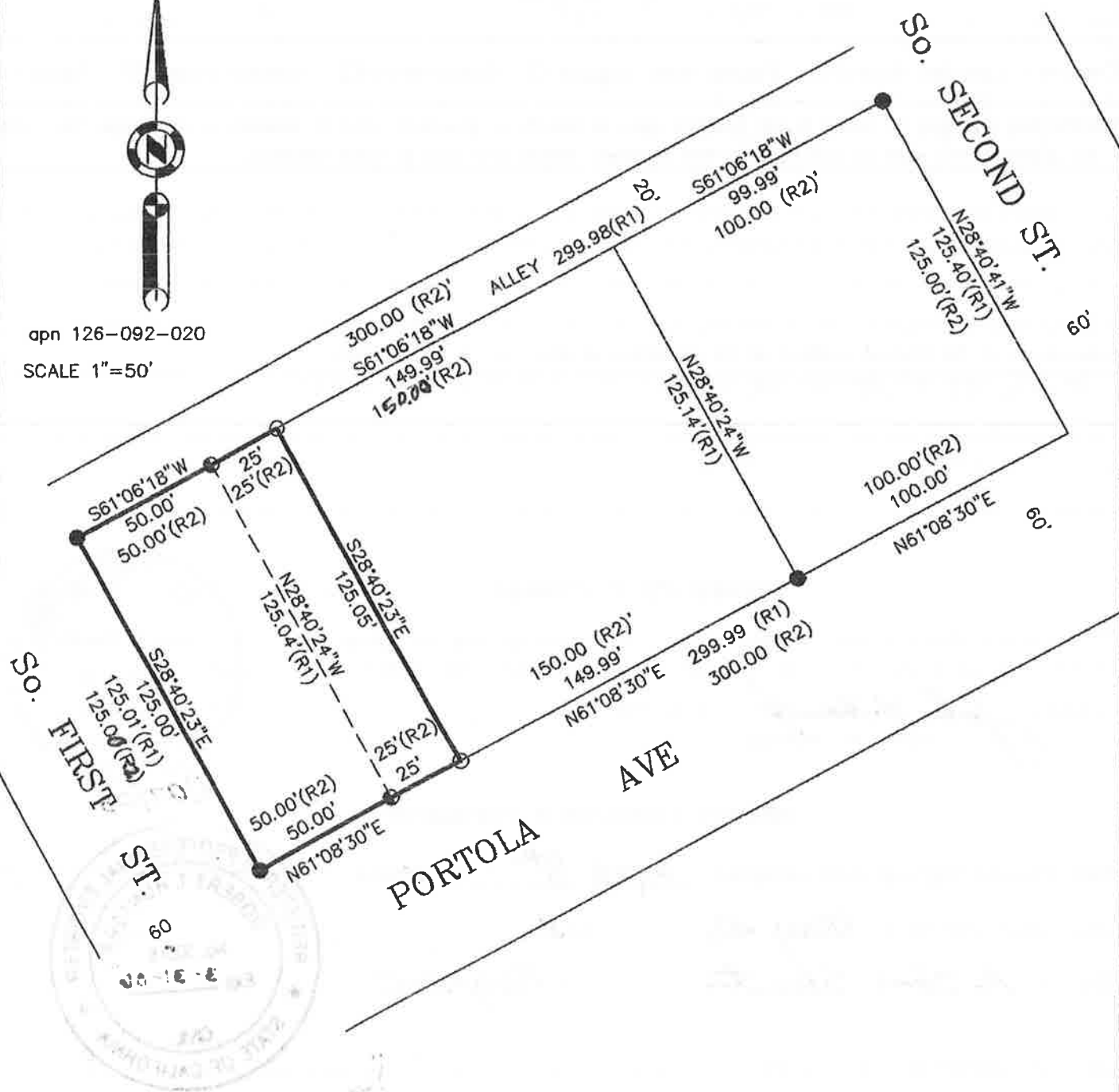
County Surveyor's Comment _____

- FOUND Rebar with Aluminum Cap LS 2843, per 6 RS 35.
- SET 5/8" Rebar & Aluminum Cap LS 2843
- FOUND 3/4" I.P. Bent
(R1) Record per 6 RS 35.
(R2) Record per A Maps 27.



apn 126-092-020

SCALE 1"=50'



A PORTION BLOCK 2
EASTERN ADDITION
TO PORTOLA TOWNSITE
A MAPS 27

Hamby Surveying Inc.
P.O. Box 1209
Portola, CA 96122
(530) 832-5571