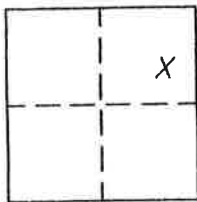


CORNER RECORD

Document Number 295

Portion NE 1/4 Section 36, T.23N.R.13E. County of Plumas, California

Brief Legal Description Lot 9 Block 50 Second North Addition to Portola Townsite
Book A Maps page 30.



CORNER TYPE

COORDINATES (Optional)

Government Corner Control
Meander Property
Rancho Other
Date of Survey May 28, 2004

N. _____
E. _____
Zone _____ Datum _____
Elev. _____

Corner— Left as found Found and tagged Established Reestablished Rebuilt

Identification and type of corner found: Evidence used to identify or procedure used to establish or reestablish the corner:
Found corners indicated in good condition. Found NE and SE corners of Lot 9
per corner record #200 destroyed by construction and replaced with rebar with
Aluminum cap stamped LS 2843.

A description of the physical condition of the monument as found and as set or reset: _____
see note above.

SURVEYOR'S STATEMENT

This Corner Record was prepared by me or under my direction in conformance with the Land Surveyors' Act on May 28, 2004.

Signed John W Hamby L.S. 2843
John W. Hamby



COUNTY SURVEYOR'S STATEMENT

This Corner Record was received April 8th 2005 and examined and filed May 31, 2005.

Signed R Tom Hunter Title Engineer

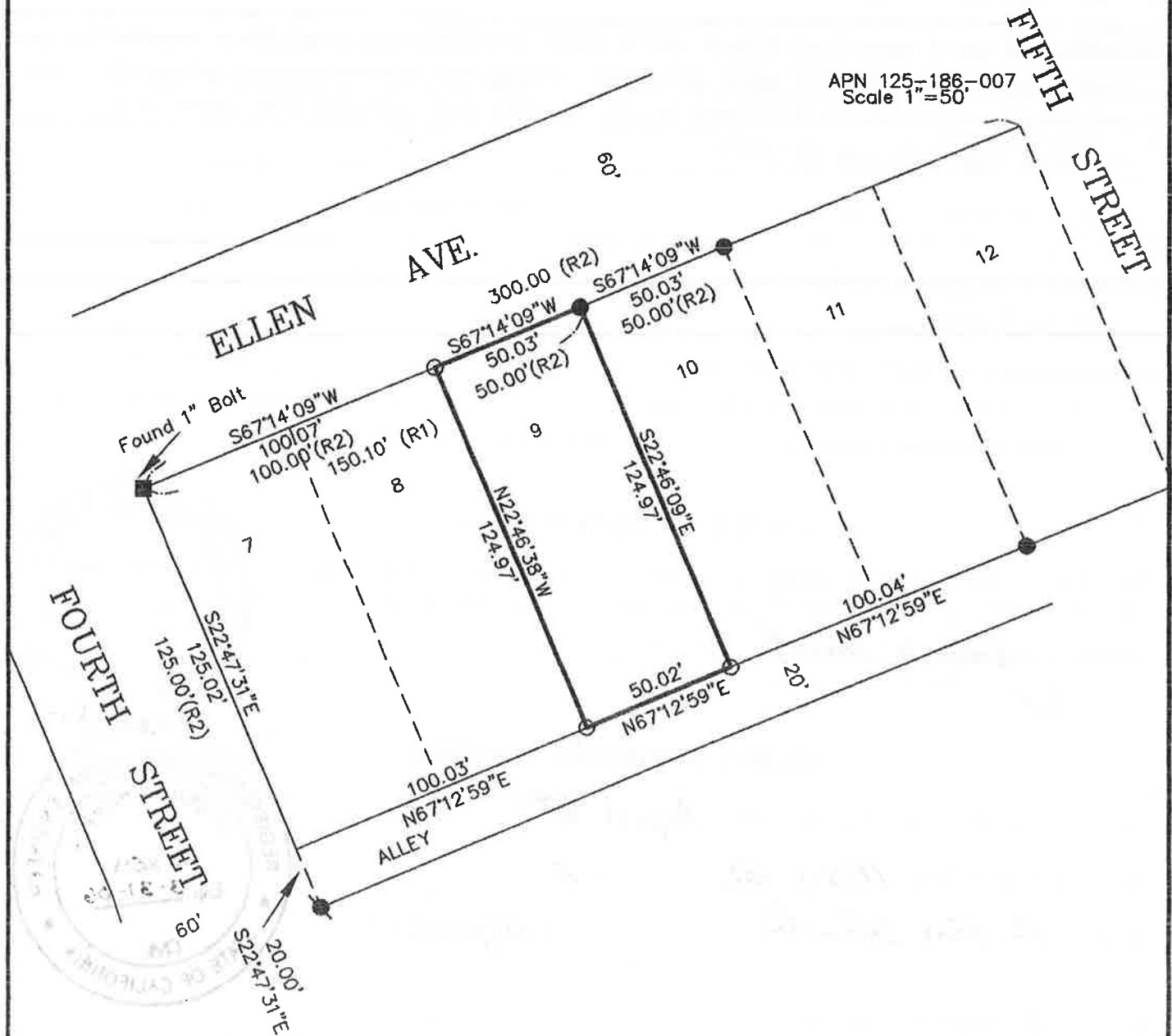


County Surveyor's Comment _____

- FOUND Rebar with Plastic Cap LS 6051, per corner record 200.
- FOUND 5/8" rebar with cap LS 2843 per corner record 200.
- FOUND point as described
- SET 5/8" Rebar & Plastic Cap LS 2843
- (R1) per corner record # 200
- (R2) per A Maps 30



APN 125-186-007
Scale 1"=50'



Lot 9 Block 50
Second North Addition
Portola Townsite
A Maps 30

Hamby Surveying Inc.
P.O. Box 1209
Portola, CA 96122
(530) 832-5571

04135