

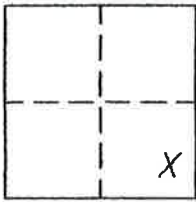
CORNER RECORD

Document Number 296

Portion Sec. 36, T.23 N.R.13E. MDM

County of Plumas, California

Brief Legal Description Lots 4 & 5 Block 4, Eastern Addition to Portola
Townsite - Book A Maps 27.



CORNER TYPE

Government Corner Control
Meander Property
Rancho Other
Date of Survey March 15, 2004

COORDINATES
(Optional)

N. _____
E. _____
Zone _____ Datum _____
Elev. _____

Corner- Left as found Found and tagged Established Reestablished Rebuilt

Identification and type of corner found: Evidence used to identify or procedure used to establish or reestablish the corner:
Found all points shown on attached sketch in good condition and
in proper locations.

A description of the physical condition of the monument as found and as set or reset:
Set the points indicated on attached sketch.

SURVEYOR'S STATEMENT

This Corner Record was prepared by me or under my direction in conformance with the Land Surveyors' Act on March 15, 2004.

Signed John W. Hamby L.S. 2843
John W. Hamby



3-30-05

COUNTY SURVEYOR'S STATEMENT

This Corner Record was received April 8th 2005 and examined and filed May 31, 2005.

Signed R. Tom Hunter Title Engineer



County Surveyor's Comment _____

- FOUND point as described
- FOUND 3/4" I.P. tagged PLS 6051 per R2.
- ⊗ FOUND 1/2" rebar aluminum cap ,per 6 RS 35.
- SET 5/8" Rebar & Aluminum Cap LS 2843
- Searched for, not found

(R1) RECORD per 8 RS 9

(R2) RECORD per Corner Record # 128.

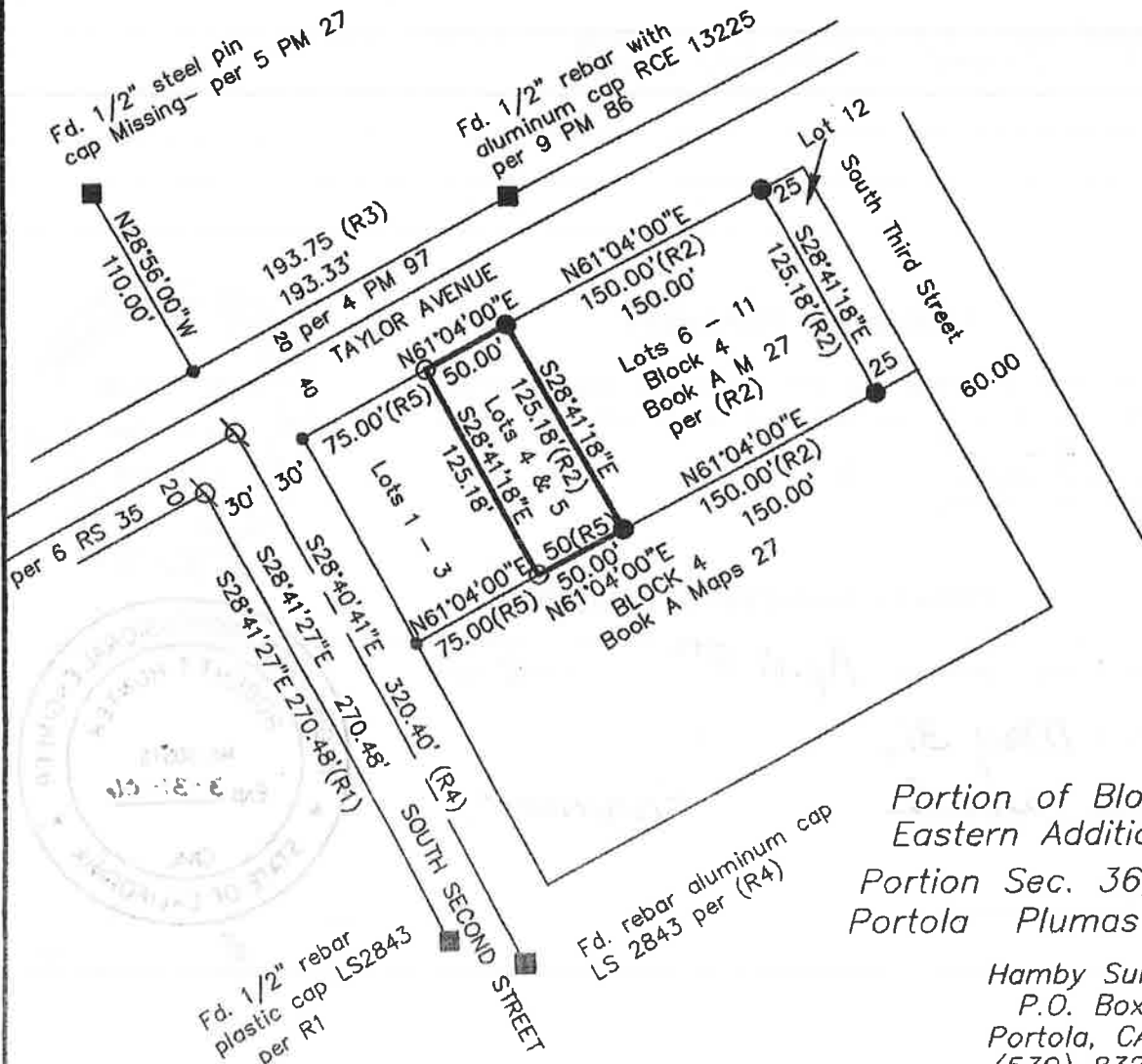
(R3) RECORD per 9 PM 86

(R4) RECORD per 6 RS 35

(R5) RECORD per A Maps 27.



Scale 1" = 100'



Portion of Block 4
 Eastern Addition to Portola
 Portion Sec. 36, T23N.R.13E
 Portola Plumas County Calif

Hamby Surveying Inc.
 P.O. Box 1209
 Portola, CA 96122
 (530) 832-5571