

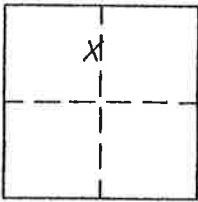
CORNER RECORD

Document Number 297

Portion Sec. 33, T.24N.R.11E. MDM

County of Plumas, California

Brief Legal Description Lot 150 Greenhorn Ranch Sub. No.2 per 4 M 14



CORNER TYPE

Government Corner Control
Meander Property
Rancho Other
Date of Survey April, 30, 2004

COORDINATES (Optional)

N. _____
E. _____
Zone _____ Datum _____
Elev. _____

Corner-- Left as found Found and tagged Established Reestablished Rebuilt

Identification and type of corner found: Evidence used to identify or procedure used to establish or reestablish the corner:
Found points indicated in good condition and in proper locations. Points search for had been destroyed by utility company and driveway construction.

A description of the physical condition of the monument as found and as set or reset:
Set points as indicated on attached drawing.

SURVEYOR'S STATEMENT

This Corner Record was prepared by me or under my direction in conformance with the Land Surveyors' Act on April 30, 2004.

Signed John W. Hamby L.S. 2843
John W. Hamby



COUNTY SURVEYOR'S STATEMENT

This Corner Record was received April 8th 2005 and examined and filed May 31, 2005

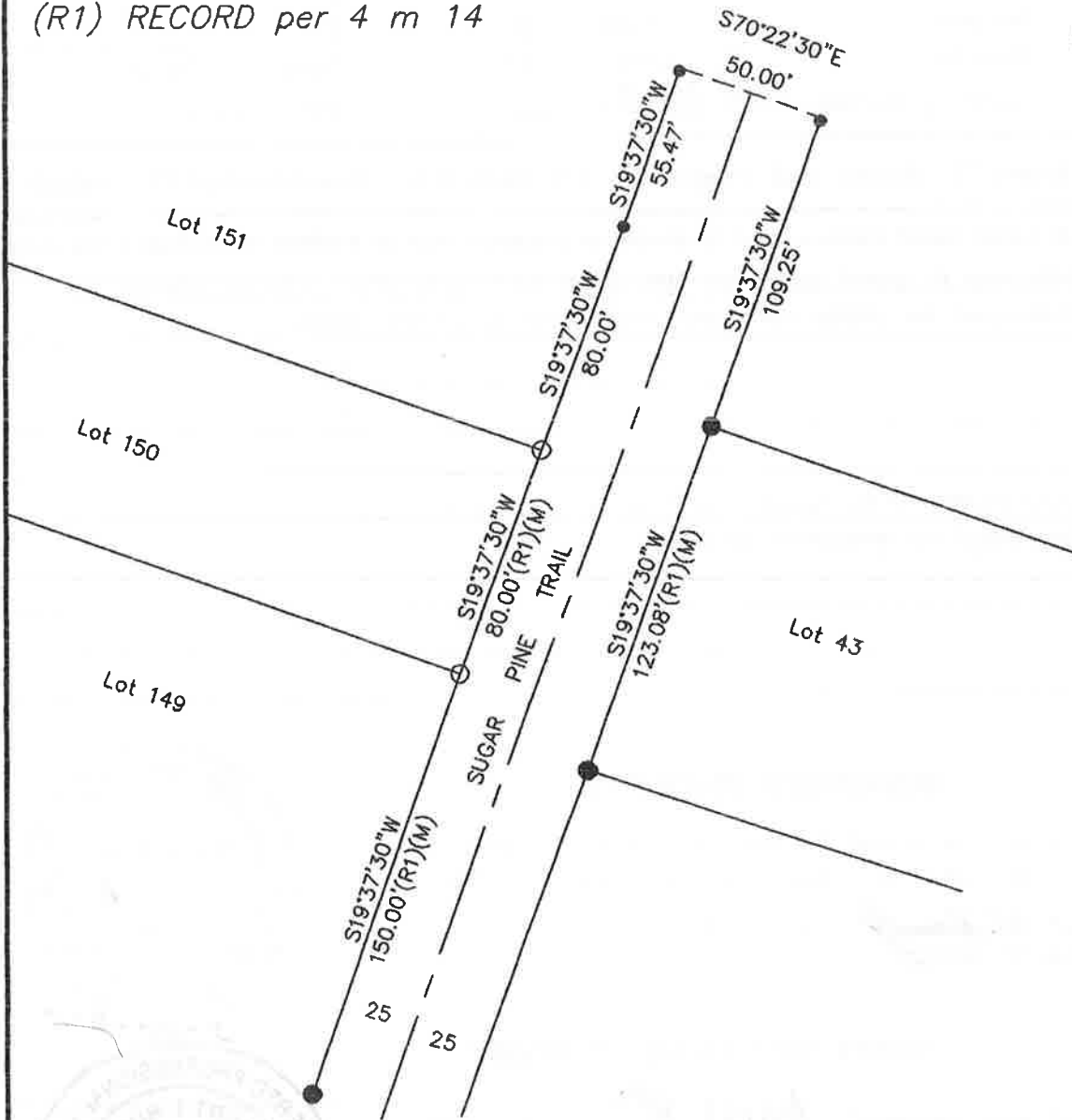
Signed R Tom Hunter Title Engineer



County Surveyor's Comment _____

- FOUND 1"i.P. tagged RCE 11585 per 4 M 18.
- SET 5/8" Rebar & Aluminum Cap LS 2843
- Searched for, not found

(R1) RECORD per 4 m 14



LOT 150
 GREENAHORN RANCH SUB. No. 2
 4 M 14
 Sec. 33 T 24N.R11E. M.D.M
 Plumas County, Calif.
 Scale 1"=60' May, 2004

Hamby Surveying Inc.
 P.O. Box 1209
 Portola, CA 96122
 (530) 832-5571