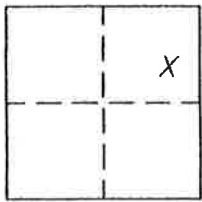


CORNER RECORD

Document Number 298

Portion NE 1/4 Section 36, T.23N.R.13E. County of Plumas, California

Brief Legal Description Lot 8 Block 50 Second North Addition to Portola Townsite
Book A Maps page 30.



CORNER TYPE

Government Corner Control
Meander Property
Rancho Other
Date of Survey April 6, 2005

COORDINATES (Optional)

N. _____
E. _____
Zone _____ Datum _____
Elev. _____

Corner— Left as found Found and tagged Established Reestablished Rebuilt

Identification and type of corner found: Evidence used to identify or procedure used to establish or reestablish the corner:
Found corners indicated in good condition, as shown on corner record # 200 AND
corner record # 295.

A description of the physical condition of the monument as found and as set or reset:
see note above.

SURVEYOR'S STATEMENT

This Corner Record was prepared by me or under my direction in conformance with the Land Surveyors' Act on April 6, 2005.

Signed John W Hamby L.S. 2843
John W. Hamby



COUNTY SURVEYOR'S STATEMENT

This Corner Record was received April 8th 2005 and examined and filed August 8 2005.

Signed R Tom Hunter Title P.C. Engineer
P.C. Surveyor



County Surveyor's Comment _____

● FOUND 5/8" rebar with cap LS 2843 per corner record 200.

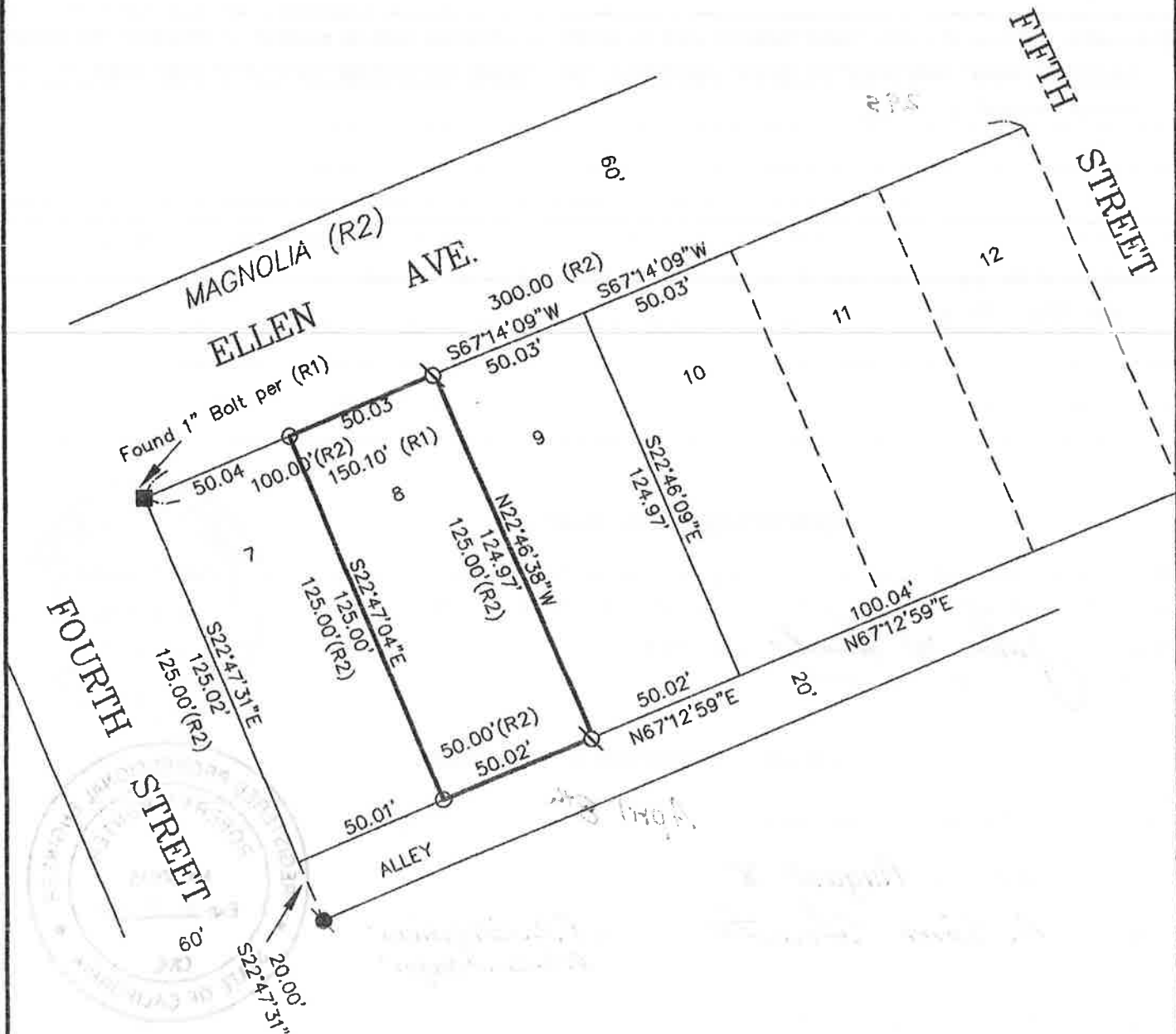
■ FOUND point as described

⊗ FOUND 5/8" rebar with aluminum cap LS 2843 per corner record # 295

○ SET 5/8" Rebar & Aluminum Cap LS 2843

(R1) per corner record # 200

(R2) per A Maps 30



Lot 8 Block 50
Second North Addition
Portola Townsite
A Maps 30

Hamby Surveying Inc.
P.O. Box 1209
Portola, CA 96122
(530) 832-5571

05036

Scale 1"=50'