

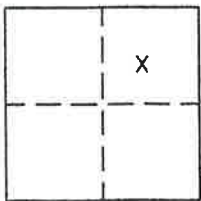
CORNER RECORD

Document Number 299

Portion NE 1/4 Section 36, T.23N.R.13E. M.D.M.

County of Plumas, California

Brief Legal Description Lots 22, 23, 24 Block 6, Northern Addition to Portola Townsite A Maps 32.



CORNER TYPE

Government Corner Control
 Meander Property
 Rancho Other
 Date of Survey August, 2003

COORDINATES (Optional)

N. _____
 E. _____
 Zone _____ Datum _____
 Elev. _____

Corner— Left as found Found and tagged Established Reestablished Rebuilt

Identification and type of corner found: Evidence used to identify or procedure used to establish or reestablish the corner:
Found points indicated in good condition and in proper location, or as indicated.

A description of the physical condition of the monument as found and as set or reset:
Set 5/8" Rebar with Aluminum Caps at locations indicated.

SURVEYOR'S STATEMENT

This Corner Record was prepared by me or under my direction in conformance with the Land Surveyors' Act on August, 2003.

Signed John W. Hamby L.S. 2843
 John W. Hamby



COUNTY SURVEYOR'S STATEMENT

This Corner Record was received May 19th 2005 and examined and filed August 8 2005.

Signed R. Tom Hunter Title County Surveyor

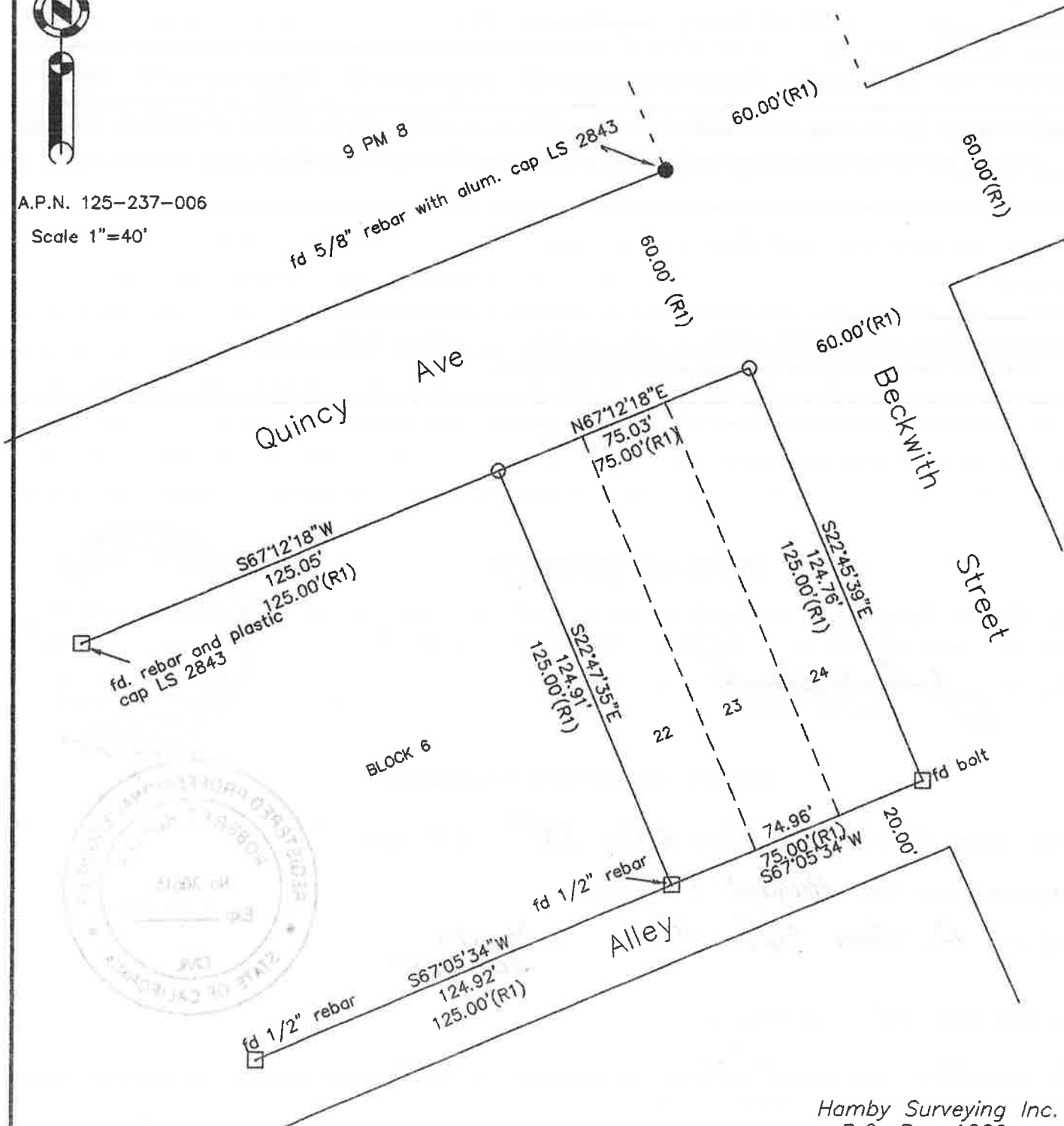


County Surveyor's Comment _____

- FOUND Rebar with Aluminum Cap LS 2843 per 9 PM 8
- SET 5/8" Rebar & Aluminum Cap LS 2843
- FOUND point as described not of record.
- (R1) RECORD per A Maps 32



A.P.N. 125-237-006
Scale 1"=40'



Hamby Surveying Inc.
P.O. Box 1209
Portola, CA 96122
(530) 832-5571

03154

Block 6 Northern Addition to Portola