

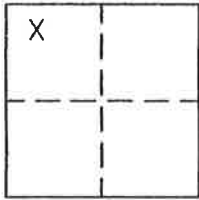
CORNER RECORD

Document Number 300

Section 24 T.24N.R.9E. MDM

County of Plumas, California

Brief Legal Description Lot 1 Claremont Village No. 4 4 M 90



CORNER TYPE

Government Corner Control
Meander Property
Rancho Other
Date of Survey April 15, 2004

COORDINATES (Optional)

N. _____
E. _____
Zone _____ Datum _____
Elev. _____

Corner— Left as found Found and tagged Established Reestablished Rebuilt

Identification and type of corner found: Evidence used to identify or procedure used to establish or reestablish the corner:
Found points as indicated in good condition

A description of the physical condition of the monument as found and as set or reset:
Set points as indicated on attached sketch

SURVEYOR'S STATEMENT

This Corner Record was prepared by me or under my direction in conformance with the Land Surveyors' Act on April 15, 2004.

Signed John W. Hamby L.S. 2843
John W. Hamby



COUNTY SURVEYOR'S STATEMENT

This Corner Record was received Dec. 8th 2004 and examined and filed August 8 2005.

Signed R. Tom Hunter Title County Surveyor



County Surveyor's Comment _____

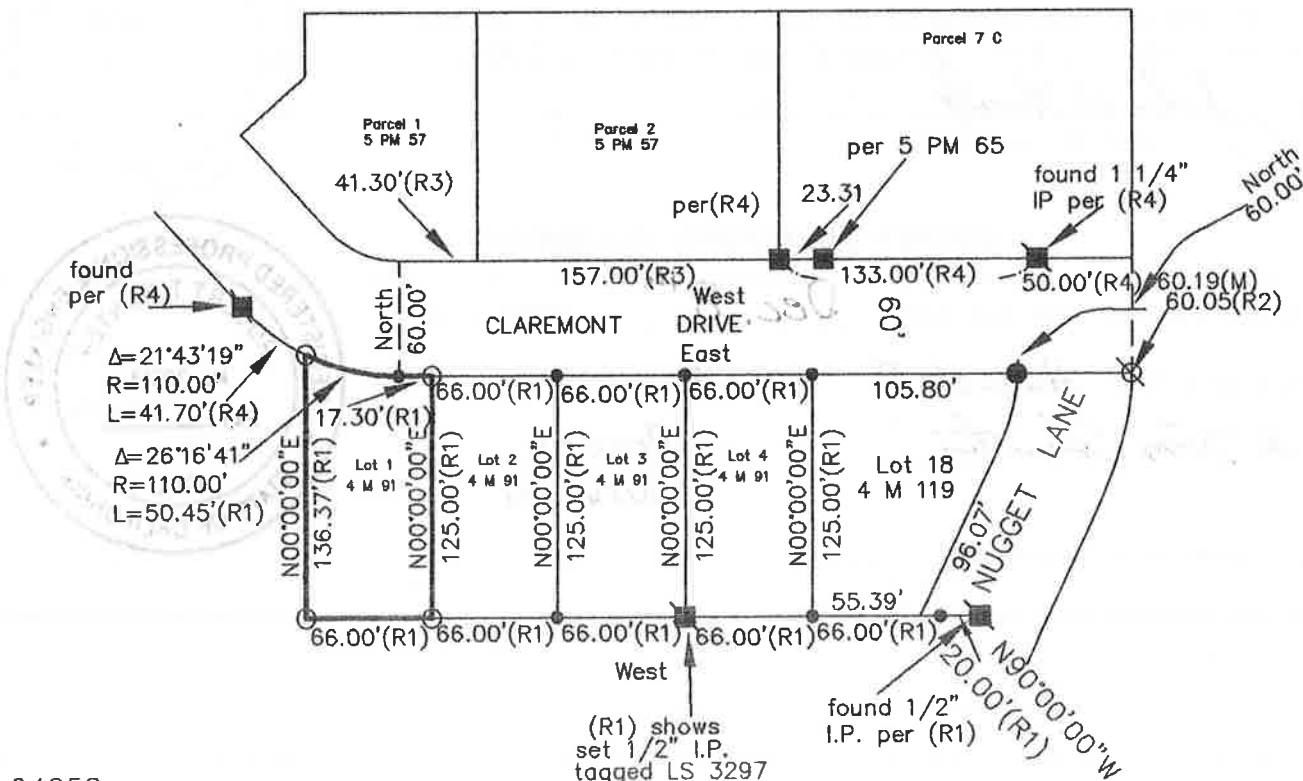
- FOUND 1/2" rebar with Plastic Cap RCE 11173
- FOUND 1/2" Rebar with Plastic Cap LS 3297 per 12 RS 141.
- ⊗ FOUND 1/2" Rebar LS 6051 per 12 RS 141.
- SET 5/8" Rebar & Plastic Cap LS 2843
- Nothing found or set
- Found 1/2" rebar

- (R1) RECORD per 4 M 90
- (R2) RECORD per 12 RS 141
- (R3) RECORD per 5 PM 57
- (R4) RECORD per 4 PM 108



LOT 1
 CLAREMONT VILLAGE No.4
 4 m 90
 Section 24, T.24N.R.9E. MDM
 Scale 1"=100' April, 2004

Hamby Surveying Inc.
 P.O. Box 1209
 Portola, CA 96122
 (530) 832-5571



04058