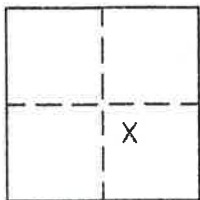


CORNER RECORD

Document Number 301

SW1/4 OF NW1/4 OF SE1/4, Sec 24, T.22N. R.12E MDM County of PLUMAS, California

Brief Legal Description Southwest parcel of Parcel on 1 PM 76.



CORNER TYPE

Government Corner Control
Meander Property
Rancho Other
Date of Survey April 5, 2005

COORDINATES (Optional)

N. _____
E. _____
Zone _____ Datum _____
Elev. _____

Corner- Left as found Found and tagged Established Reestablished Rebuilt

Identification and type of corner found: Evidence used to identify or procedure used to establish or reestablish the corner:
Found points marked as shown on attached sketch in locations shown.

A description of the physical condition of the monument as found and as set or reset: _____
Found points as indicated in good condition. Set point as indicated on attached sketch.

SURVEYOR'S STATEMENT

This Corner Record was prepared by me or under my direction in conformance with the Land Surveyors' Act on April 5, 2005.

Signed John W. Hamby L.S. 2843
John W. Hamby



4-13-05

(18)

COUNTY SURVEYOR'S STATEMENT

This Corner Record was received May 31st 2005 and examined and filed August 8 2005.

Signed R. Tom Hunter Title County Surveyor



County Surveyor's Comment _____

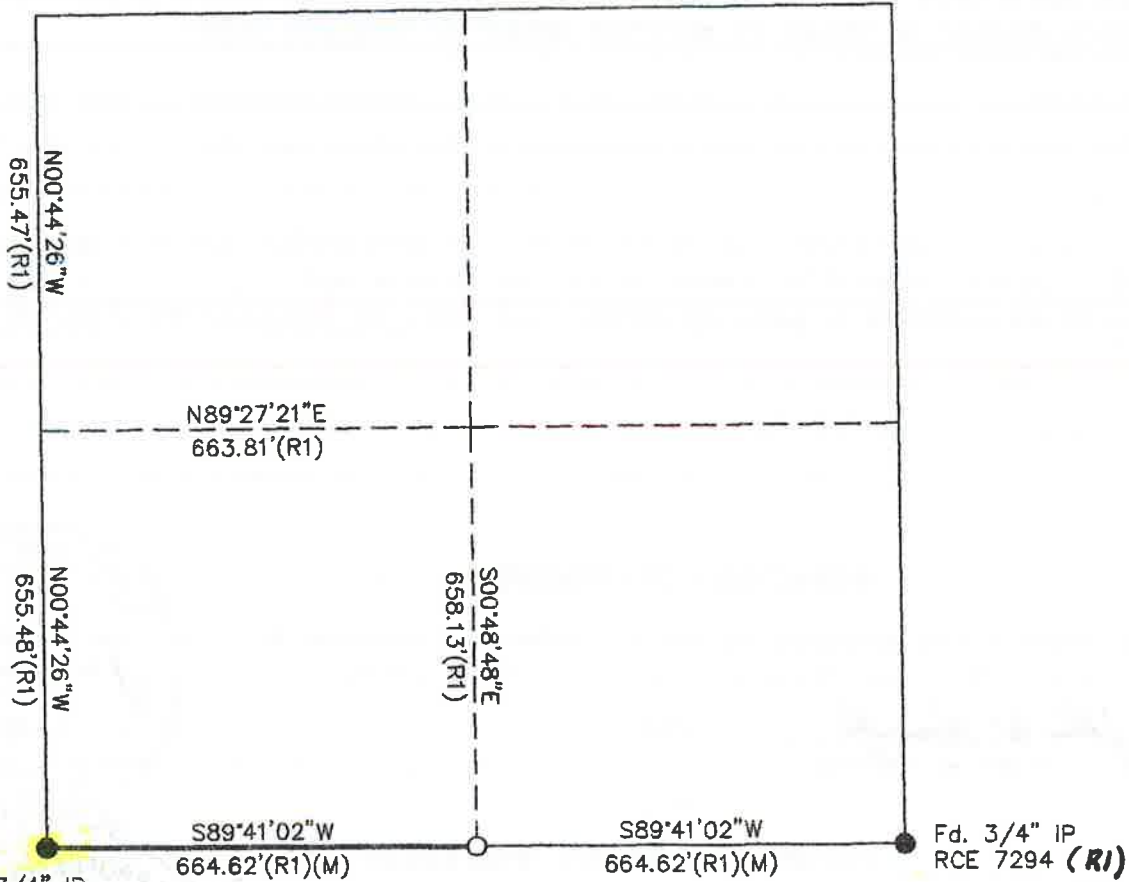
- FOUND point as described
- SET 5/8" Rebar & Aluminum Cap LS 2843

(R1) RECORD per 1 PM 76



APN 123-130-001
Scale 1"=300'

Center Sec. 24.



Fd. 3/4" IP
LS 2846 **Norris**
set plug for Grimes
RCE 7294

Fd. 3/4" IP
RCE 7294 (R1)

Southwest Parcel of
Parcels on 1 PM 76

PLUMAS COUNTY, CALIF.
SCALE 1"=300' APRIL 2005

Hamby Surveying Inc.
P.O. Box 1209
Portola, CA 96122
(530) 832-5571