

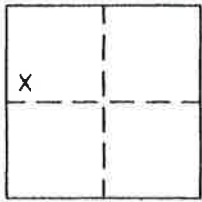
CORNER RECORD

Document Number 302

o.k.

Portion Section 1 T.22N. R.13E. M.D.M. County of Plumas, California

Brief Legal Description Lot 9 Ridgewood Subdivision Unit No. 1 per 5 M 45.



CORNER TYPE

Government Corner  Control   
Meander  Property   
Rancho  Other   
Date of Survey June 10, 2005

COORDINATES (Optional)

N. \_\_\_\_\_  
E. \_\_\_\_\_  
Zone \_\_\_\_\_ Datum \_\_\_\_\_  
Elev. \_\_\_\_\_

Corner— Left as found  Found and tagged  Established  Reestablished  Rebuilt

Identification and type of corner found: Evidence used to identify or procedure used to establish or reestablish the corner:  
Found corners indicated on attached sketch in good condition.

A description of the physical condition of the monument as found and as set or reset: \_\_\_\_\_  
Set 5/8" rebar with aluminum cap stamped LS 2843 as indicated between found corners.

SURVEYOR'S STATEMENT

This Corner Record was prepared by me or under my direction in conformance with the Land Surveyors' Act on June 10, 2005.

Signed John W. Hamby L.S. 2843  
John W. Hamby



COUNTY SURVEYOR'S STATEMENT

This Corner Record was received 7/11/05 2005 and examined and filed August 8 2005.

Signed R Tom Hunter Title County Surveyor



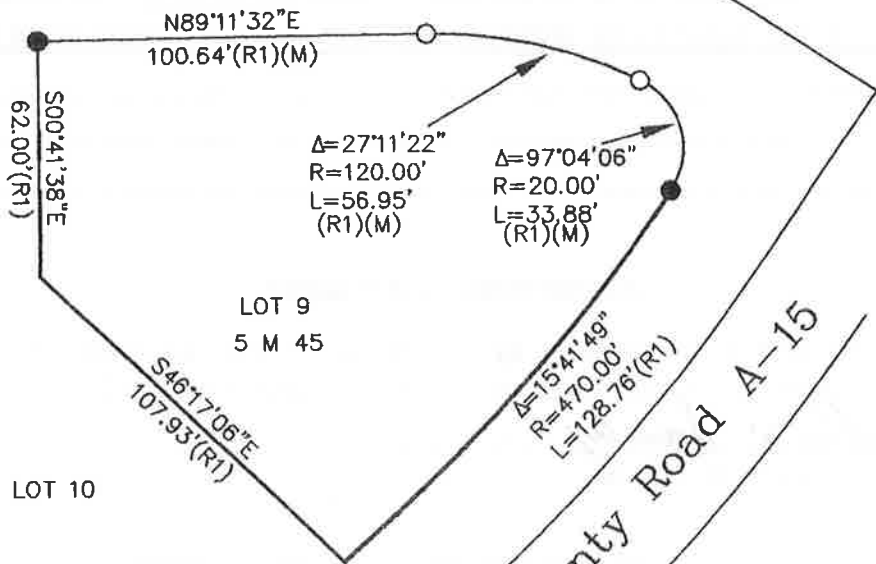
County Surveyor's Comment \_\_\_\_\_

- FOUND 1/2" Rebar with Plastic Cap LS 3297. (R1)
  - SET 5/8" Rebar & Aluminum Cap LS 2843
- (R1) RECORD per 5 m 45.



PONDEROSA CIRCLE

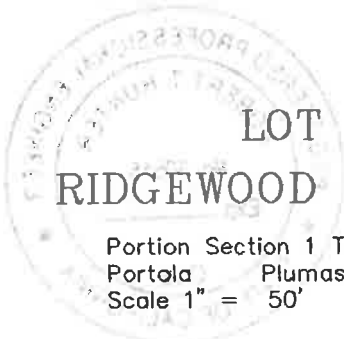
LOT 12



County Road A-15

LOT 9  
RIDGEWOOD SUBDIVISION

Portion Section 1 T.22N. R.13E., MDM  
Portola Plumas County Calif.  
Scale 1" = 50' June, 2005



Hamby Surveying Inc.  
P.O. Box 1209  
Portola, CA 96122  
(530) 832-5571