

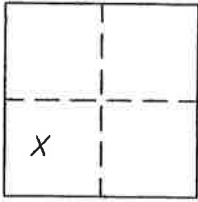
CORNER RECORD

Document Number 303

Portion Sec. 36, T.23N.R.13E. M.D.M.

County of Plumas, California

Brief Legal Description Lots 6 & 7 of a Resubdivision of a Portion of Second North Addition to Portola Townsite per 2 M 2.



CORNER TYPE

Government Corner  Control   
Meander  Property   
Rancho  Other   
Date of Survey April 27, 2005

COORDINATES (Optional)

N. \_\_\_\_\_  
E. \_\_\_\_\_  
Zone \_\_\_\_\_ Datum \_\_\_\_\_  
Elev. \_\_\_\_\_

Corner- Left as found  Found and tagged  Established  Reestablished  Rebuilt

Identification and type of corner found: Evidence used to identify or procedure used to establish or reestablish the corner:  
Points found were on good condition, except the plastic caps shown were split and not legible.

A description of the physical condition of the monument as found and as set or reset:  
Set 5/8" rebar with Aluminum cap stamped LS 2843 at location indicated, between found monuments.

SURVEYOR'S STATEMENT

This Corner Record was prepared by me or under my direction in conformance with the Land Surveyors' Act on April 27, 2005.

Signed John W. Hamby L.S. 2843  
John W. Hamby



COUNTY SURVEYOR'S STATEMENT

This Corner Record was received Aug. 2<sup>nd</sup> 2005 and examined and filed August 16 2005.

Signed R. Tom Spurter Title County Surveyor



County Surveyor's Comment \_\_\_\_\_

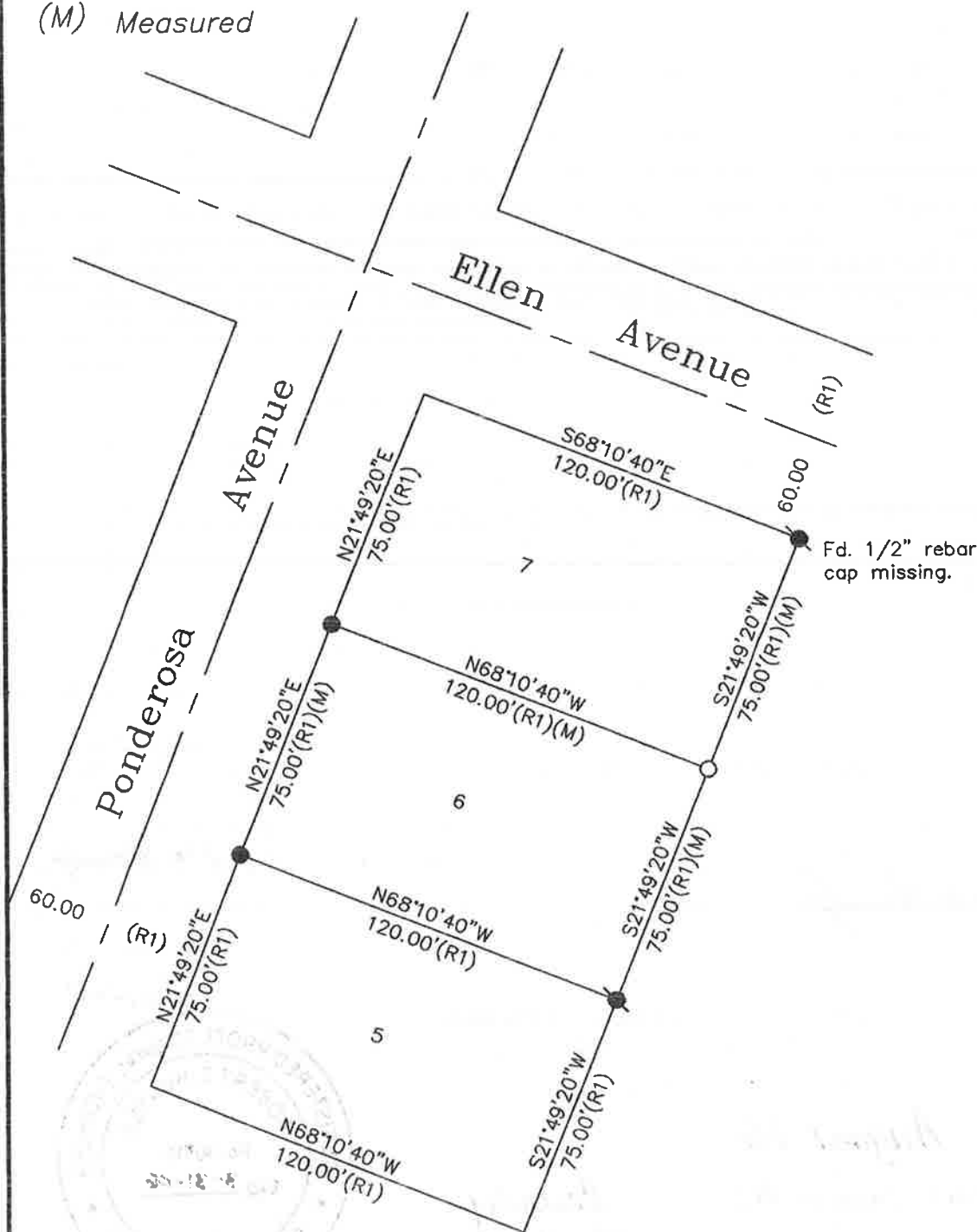
- FOUND Rebar with Aluminum Cap LS 2843 → origin unknown,
- FOUND Rebar with Plastic Cap not legible → accepted as lot corners.
- SET 5/8" Rebar & Aluminum Cap LS 2843

(R1) RECORD per 2 M 2

(M) Measured



Scale 1"=50'



PORTION BLOCK 48  
RESUBDIVISION OF A  
PORTION 2nd NORTH  
ADDITION TO PORTOLA

BOOK 2 MAPS PAGE 2

Hamby Surveying Inc.  
P.O. Box 1209  
Portola, CA 96122  
(530) 832-5571