

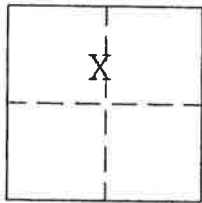
CORNER RECORD

Document Number 304

Sec. 36 T.23N.R.13E. MDM

County of Plumas, California

Brief Legal Description Portion Block 71, AMENDED RE-SUBDIVISION OF A PORTION OF 2 ND NORTH ADD. TO PORTOLA TOWNSITE



CORNER TYPE

2 MAPS 43

COORDINATES (Optional)

Government Corner Control
Meander Property
Rancho Other
Date of Survey Sept. 30, 2003

N. _____
E. _____
Zone _____ Datum _____
Elev. _____

Corner- Left as found Found and tagged Established Reestablished Rebuilt

Identification and type of corner found: Evidence used to identify or procedure used to establish or reestablish the corner:
Found points indicated in good condition as shown on attached sketch.

A description of the physical condition of the monument as found and as set or reset:
Set 5/8" rebar with aluminum cap stamped LS 2843 as shown on attached sketch.

SURVEYOR'S STATEMENT

This Corner Record was prepared by me or under my direction in conformance with the Land Surveyors' Act on Oct. 6, 2003.

Signed John W. Hamby L.S. 2843
John W. Hamby



8-01-05

COUNTY SURVEYOR'S STATEMENT

This Corner Record was received Aug. 2nd 2005 and examined and filed August 16, 2005.

Signed R. Tom Stautes Title County Surveyor



County Surveyor's Comment _____

● FOUND Rebar with Aluminum Cap LS 2843, not record.

○ SET 5/8" Rebar & Aluminum Cap LS 2843

⊗ FOUND 3/4" I.P. not record.

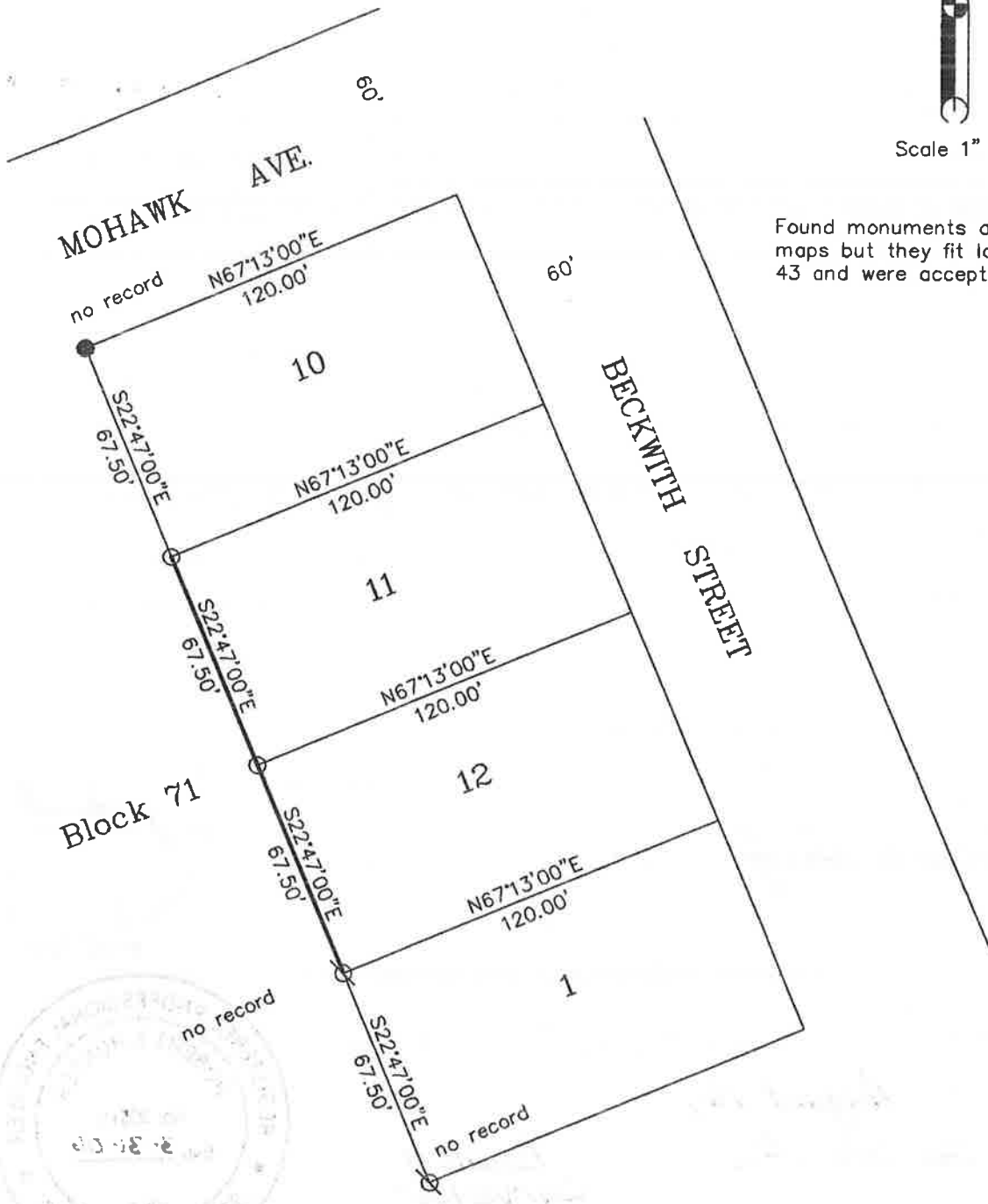
(R1) RECORD per 2 M 43

All distances are (R1) & Measured.



Scale 1" = 50'

Found monuments are not on record maps but they fit locations on 2 M 43 and were accepted as lot corners.



Portion of Block 71
Amended Re-Subdivision
Second North Addition
to Portola Townsite
2 MAPS 43

Hamby Surveying Inc
P.O. Box 1209
Portola, CA 96122
(530) 832-5571