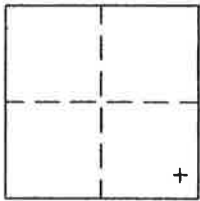


CORNER RECORD

Document Number 305

Portion of Section 35, T.23N.R.13 E. M.D.M. County of Plumas, California

Brief Legal Description Lot 7 Block 5 Portola Heights per Book A page 33 and Book 5 RS 86 Plumas Records.



CORNER TYPE

Government Corner Control
Meander Property
Rancho Other
Date of Survey April 4, 2005

COORDINATES (Optional)

N. _____
E. _____
Zone _____ Datum _____
Elev. _____

Corner— Left as found Found and tagged Established Reestablished Rebuilt

Identification and type of corner found: Evidence used to identify or procedure used to establish or reestablish the corner:
Found rebar and aluminum caps as shown on attached sketch and on 5 RS 86.

A description of the physical condition of the monument as found and as set or reset:
Points found and used were in good condition and in proper locations.

SURVEYOR'S STATEMENT

This Corner Record was prepared by me or under my direction in conformance with the Land Surveyors' Act on April 4, 2005

Signed John W. Hamby L.S. 2843
John W. Hamby



8-01-06

COUNTY SURVEYOR'S STATEMENT

This Corner Record was received Aug. 2nd 2005 and examined and filed August 16 2005.

Signed R. Tom Hunter Title County Surveyor



County Surveyor's Comment _____

● FOUND Rebar with Aluminum Cap LS 2843, or as described.

○ SET 5/8" Rebar & Aluminum Cap LS 2843

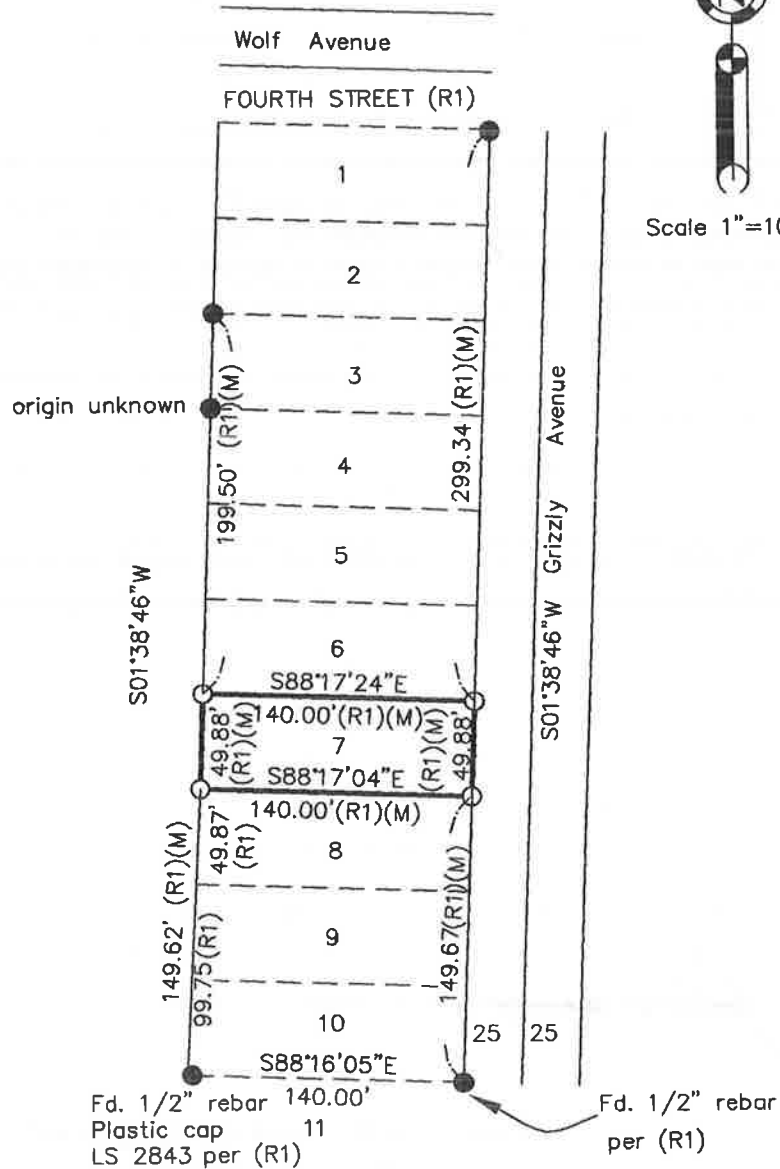
(R1) RECORD per 5 RS 86.

Distances are record per 5 RS 86 and Measured..

(M) Measured

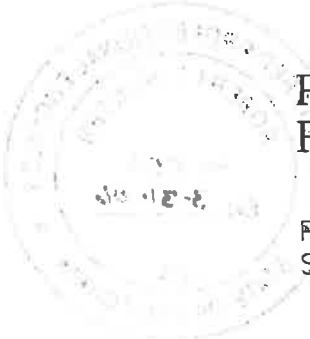


Scale 1"=100'



**PORTION BLOCK 5
PORTOLA HEIGHTS**
PER BOOK 5 RS 86

Plumas County, Calif.
Scale 1"=100' April, 2005



Hamby Surveying Inc.
P.O. Box 1209
Portola, CA 96122
(530) 832-5571