

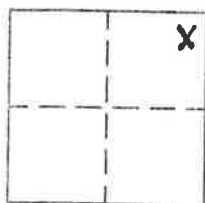
CORNER RECORD

Document Number 306

Section 17, T.21N., R.9E., M.D.M.

County of Plumas, California

Brief Legal Description Lot 110, LA Porte Pines Country Club, 2 Maps 71, Plumas County records.



CORNER TYPE

Government Corner Control
Meander Property
Rancho Other
Date of Survey 8-02-05

COORDINATES
(Optional)

N. _____
E. _____
Zone _____ Datum _____
Elev. _____

Corner— Left as found Found and tagged Established Reestablished Rebuilt

Identification and type of corner found: Evidence used to identify or procedure used to establish or reestablish the corner:
Found most Northerly corner of Lot 110 and Southeast corner of Lot 106 from which I set the most Easterly corner of Lot 110 in record position as shown on attached sketch.

A description of the physical condition of the monument as found and as set or reset:
Found 1 1/2" I.P. tagged RCE 8850 at most Northerly corner of Lot 110 and 1/2" rebar at most Easterly corner of Lot 106 as shown on attached sketch.

SURVEYOR'S STATEMENT

This Corner Record was prepared by me or under my direction in conformance with the Land Surveyors' Act on August 3, 2005.

Signed John W. Hamby L.S. 2843
John W. Hamby



COUNTY SURVEYOR'S STATEMENT

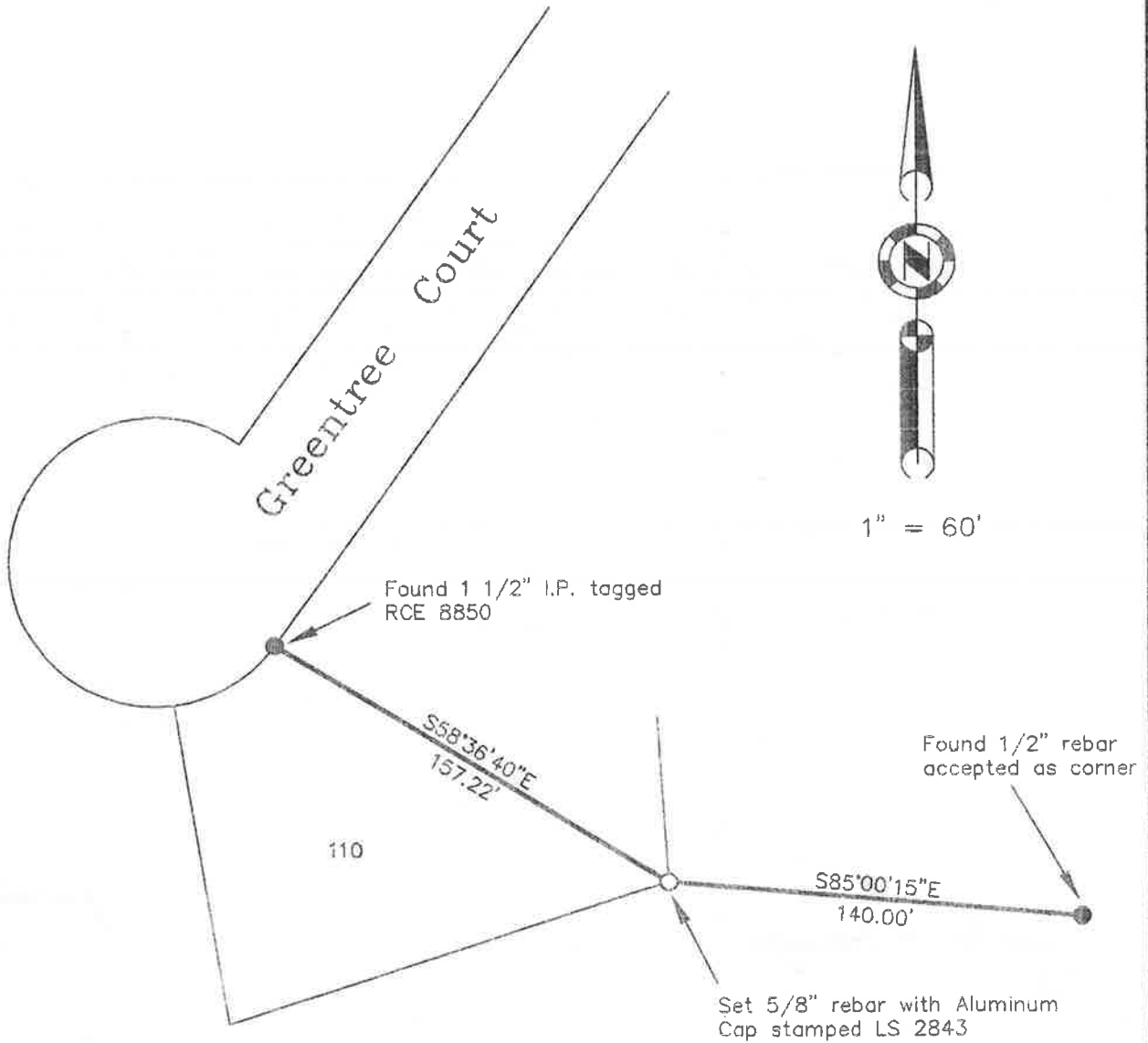
This Corner Record was received Aug. 8th 2005 and examined and filed August 16 2005.

Signed R. Tom Hunter Title County Surveyor



County Surveyor's Comment _____

NOTE: All bearings and distances shown are measured and record per 2 M 71.



Lot 110, La Porte Pines
Country Club, 2 M 71

Hamby Surveying Inc.
P.O. Box 1209
Portola, CA 96122
(530) 832-5571