

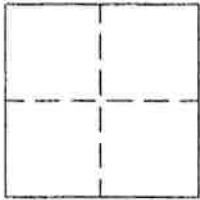
CORNER RECORD

Document Number 307

Portion Section 8, T. 22 N., R. 12 E., M.D.M.

County of Plumas, California

Brief Legal Description Lot 31, Plumas-Eureka Estates Unit No. 2, 4 M 96



CORNER TYPE

Government Corner Control
Meander Property
Rancho Other
Date of Survey August 10, 2005

COORDINATES (Optional)

N. _____
E. _____
Zone _____ Datum _____
Elev. _____

Corner-- Left as found Found and tagged Established Reestablished Rebuilt

Identification and type of corner found: Evidence used to identify or procedure used to establish or reestablish the corner:
Found 1/2" rebar at Southeast corner of Lot 30 and P.C. North of Southeast corner of Lot 31 as shown in Book 4 of Maps at page 96, Plumas County records, as shown in attached sketch.

A description of the physical condition of the monument as found and as set or reset: Set 5/8" rebar with Aluminum Cap stamped LS 5620 in record position for Southeast corner of Lot 31 as shown in attached sketch.

SURVEYOR'S STATEMENT

This Corner Record was prepared by me or under my direction in conformance with the Land Surveyors' Act on August 10, 2005.

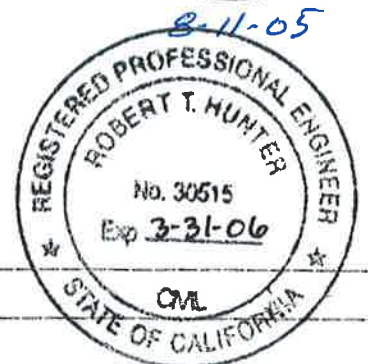
Signed John L. Owen L.S. 5620
John L. Owen



COUNTY SURVEYOR'S STATEMENT

This Corner Record was received Aug 10th 2005 and examined and filed October 25 2005.

Signed Robert T. Hunter Title Plumas Co. Surveyor



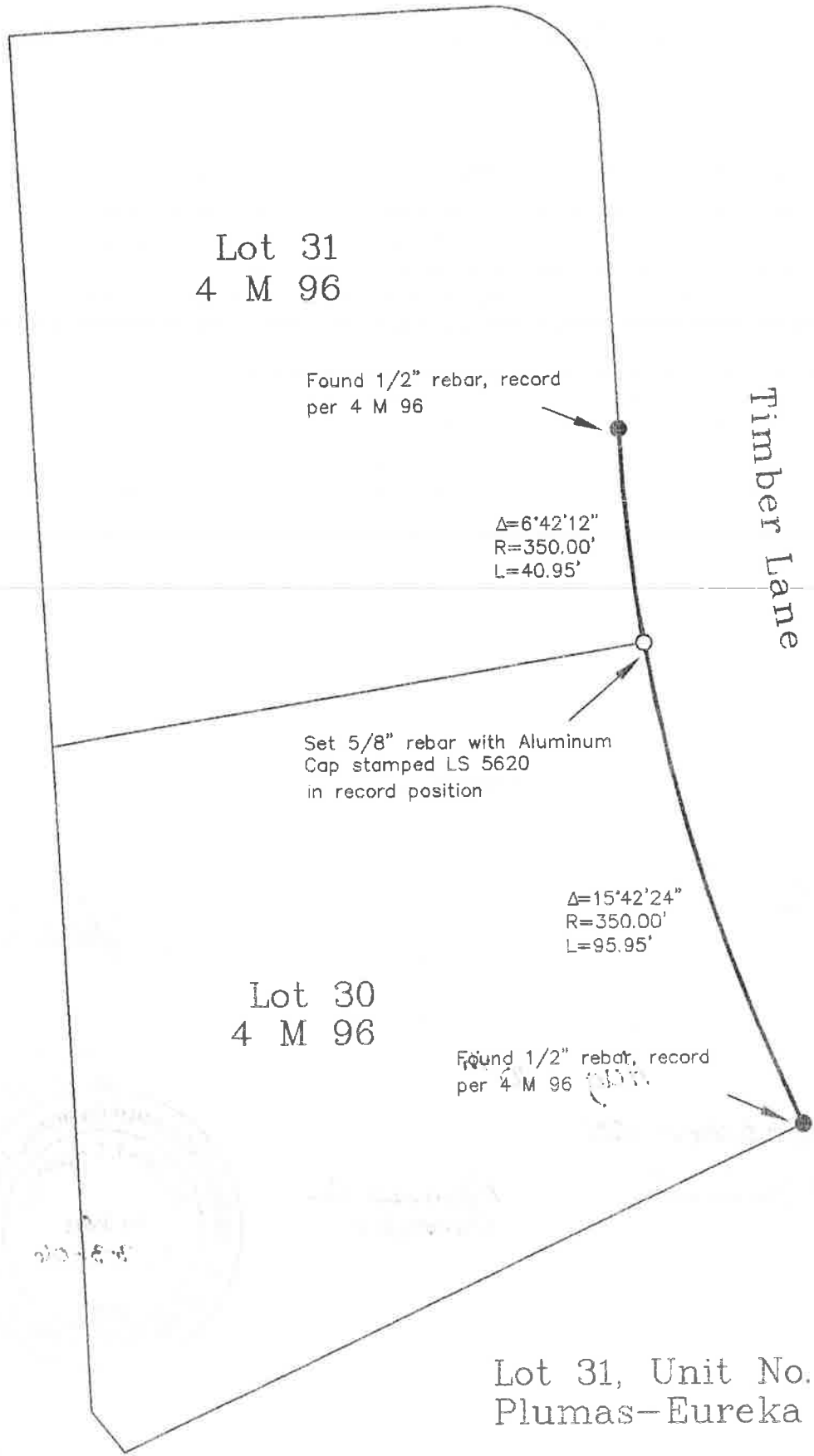
County Surveyor's Comment _____

Madora Lake Road

NOTE: Curve data are record per 4 M 96 and measured.



1" = 30'



Lot 31, Unit No. 2, 9 M 96
Plumas-Eureka Estates