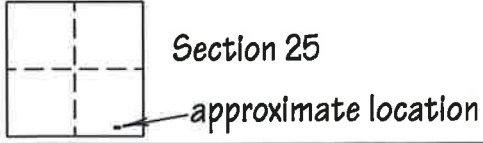


CORNER RECORD

309

COUNTY OF Plumas T. 28 N R. 7 E Mount Diablo MERIDIAN CALIFORNIA

CORNER TYPE: GOV'T CORNER MEANDER RANCHO CONTROL OTHER
 CORNER IDENTIFICATION - DATE OF VISIT August 23, 2005



CORNER - LEFT AS FOUND FOUND AND TAGGED REESTABLISHED OBLITERATED CORNER REBUILT

PHYSICAL DESCRIPTION OF CORNER FOUND: EVIDENCE AND METHOD USED TO IDENTIFY OR REESTABLISH

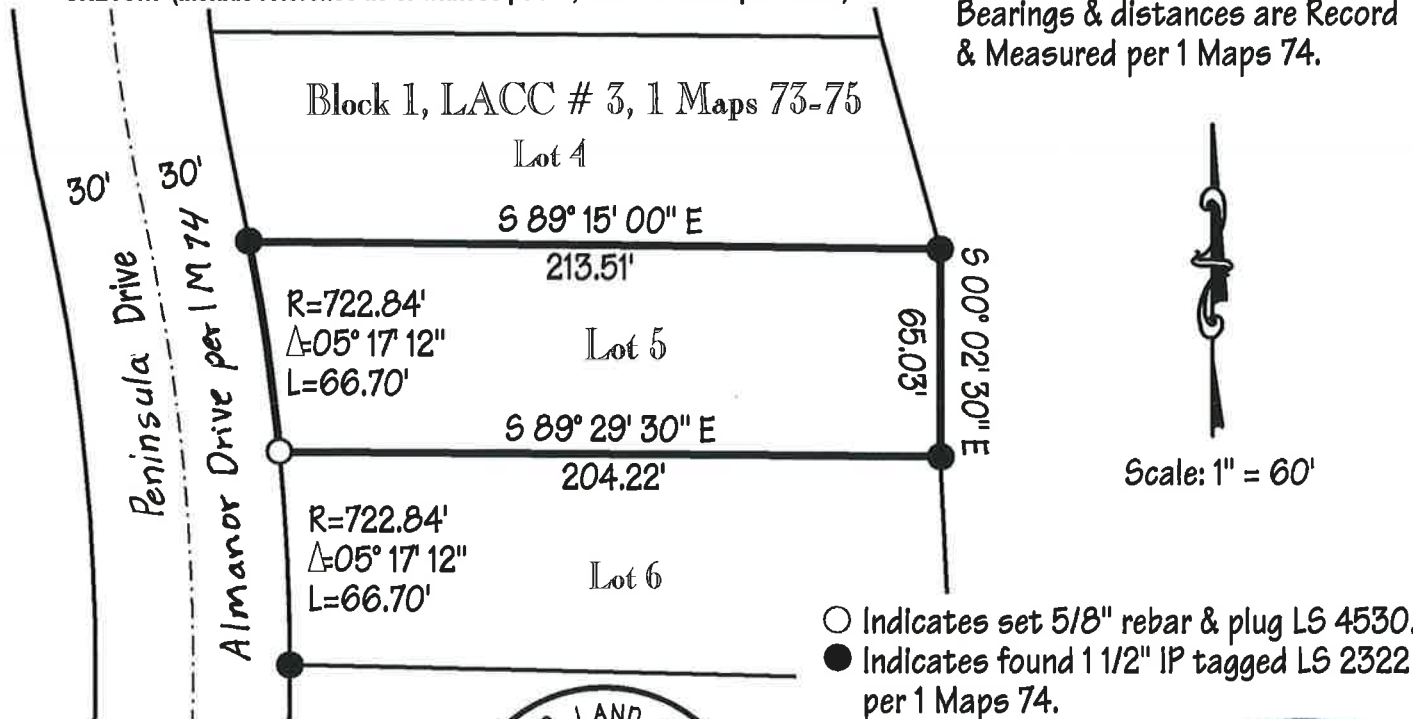
The SW corner of Lot 5 was not found. The NW corner of Lot 5 and the SW corner of Lot 6 were used to re-establish the missing corner.

PHYSICAL DESCRIPTION OF MONUMENTS REBUILT OR PERPETUATED

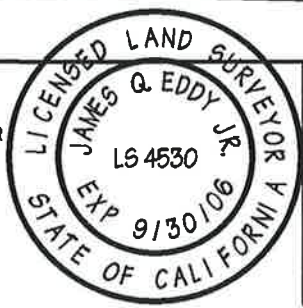
Set 5/8" rebar and plastic plug stamped LS 4530

CALIFORNIA COORDINATE SYSTEM ORDER: FIRST SECOND THIRD
 STATIONS USED: NGS (USC & GS) STATE COUNTY OTHER STATION _____ STATION _____
 ZONE _____ ELEVATION _____ NORTHINGS(Y) _____ EASTINGS (X) _____

SKETCH: (Include reference tie or witness points, remarks and topo of area)



SURVEYOR'S CERTIFICATE
 THIS CORNER RECORD WAS PREPARED BY ME OR UNDER MY DIRECTION IN CONFORMANCE WITH THE LAND SURVEYORS ACT ON August 23, 2005.
 SIGNED James Q. Eddy Jr.
 L.S. or R.C.E. No. L.S. 4530
 05-03-62 SEAL



COUNTY SURVEYOR'S CERTIFICATE
 THE CORNER RECORD WAS RECEIVED 10/25/05 AND EXAMINED AND FILED 10/25/05
 BY: Robert T. Hunter
 TITLE: Plumas Co. Engineer
 DOCUMENT No. 309

