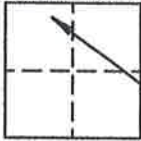


CORNER RECORD

310

COUNTY OF Plumas T. 27N R. 8E Mount Diablo MERIDIAN CALIFORNIA

CORNER TYPE: GOVT CORNER  MEANDER  RANCHO  CONTROL  OTHER   
CORNER IDENTIFICATION - DATE OF VISIT November 24, 20 04



Section 10  
approximate location

Lot 4 of Block 6, 1 Maps 48.

CORNER - LEFT AS FOUND  FOUND AND TAGGED  REESTABLISHED OBLITERATED CORNER  REBUILT

PHYSICAL DESCRIPTION OF CORNER FOUND: EVIDENCE AND METHOD USED TO IDENTIFY OR REESTABLISH

The Northwestern corner of Lot 4 was not found. The corner was reestablished by single proportion from the found and accepted iron bolt at the Southwestern corner of Lot 4 and the found 1/2" rebar and plug tagged LS 3989 at the Northwestern corner of Lot 5.

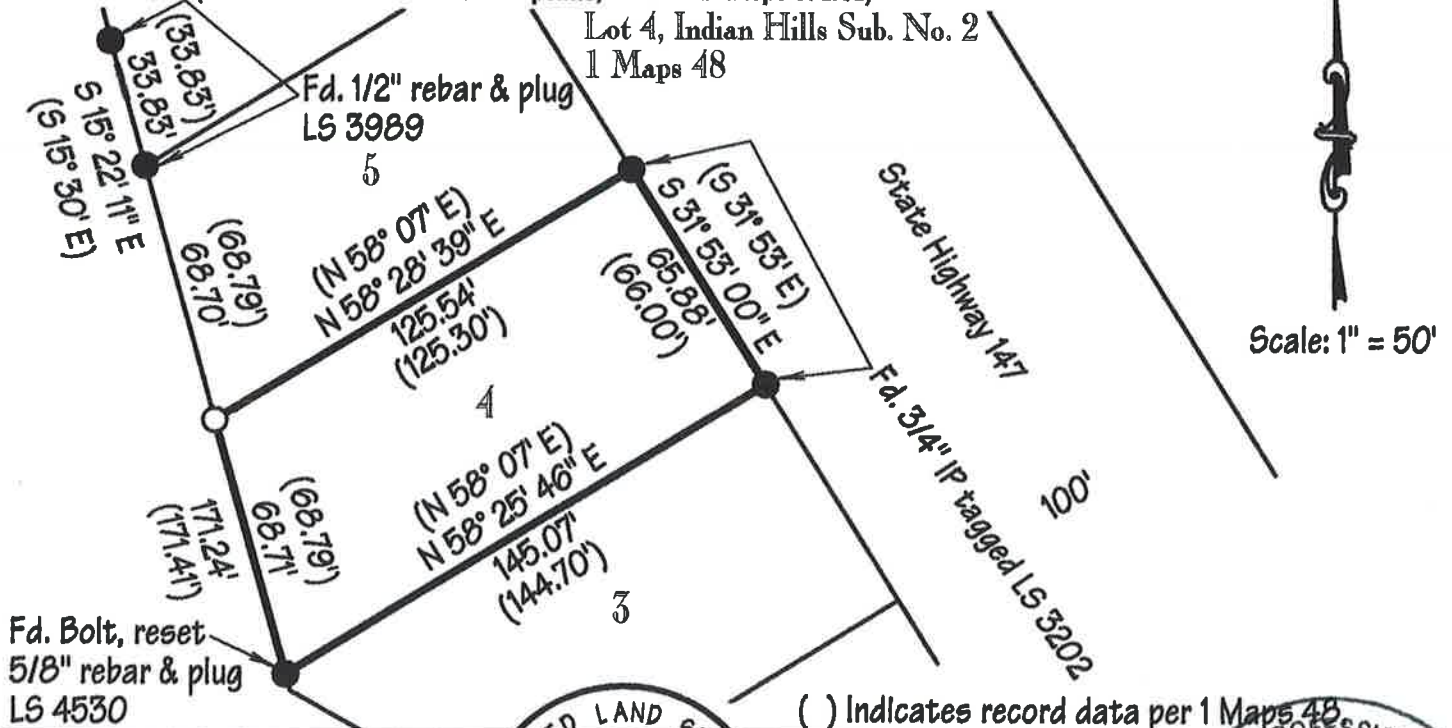
Found monuments accepted as lot corners, Record reference unknown or of no record.

PHYSICAL DESCRIPTION OF MONUMENTS REBUILT OR PERPETUATED

Set 5/8" rebar and plastic plug stamped LS 4530

CALIFORNIA COORDINATE SYSTEM ORDER: FIRST  SECOND  THIRD   
STATIONS USED: NGS (USC & GS)  STATE  COUNTY  OTHER  STATION \_\_\_\_\_ STATION \_\_\_\_\_  
ZONE \_\_\_\_\_ ELEVATION \_\_\_\_\_ NORTHINGS(Y) \_\_\_\_\_ EASTINGS (X) \_\_\_\_\_

SKETCH: (Include reference tie or witness points, remarks and topo of area)



Scale: 1" = 50'

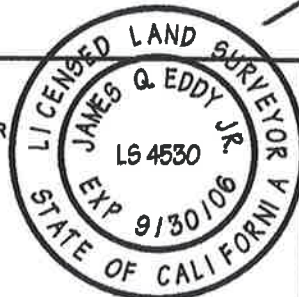
( ) Indicates record data per 1 Maps 48

SURVEYOR'S CERTIFICATE

THIS CORNER RECORD WAS PREPARED BY ME OR UNDER MY DIRECTION IN CONFORMANCE WITH THE LAND SURVEYORS ACT OF November 26, 20 04.

SIGNED James G. Eddy Jr.

L.S. or R.C.E. No. L.S. 4530  
04-03-45 SEAL



COUNTY SURVEYOR'S CERTIFICATE

THE CORNER RECORD WAS RECEIVED 10/25/05 AND EXAMINED AND FILED 10/25/05

BY: Robert T. Hunter  
TITLE: Plumas Co. Engineer

DOCUMENT No. 310

