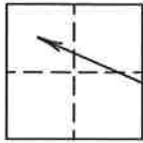


CORNER RECORD

311

COUNTY OF Plumas T. 28 N R. 8 E Mount Diablo MERIDIAN CALIFORNIA

CORNER TYPE: GOV'T CORNER MEANDER RANCHO CONTROL OTHER
CORNER IDENTIFICATION - DATE OF VISIT September 30, 20 04



Section 30
approximate location

CORNER - LEFT AS FOUND FOUND AND TAGGED REESTABLISHED OBLITERATED CORNER REBUILT

PHYSICAL DESCRIPTION OF CORNER FOUND: EVIDENCE AND METHOD USED TO IDENTIFY OR REESTABLISH

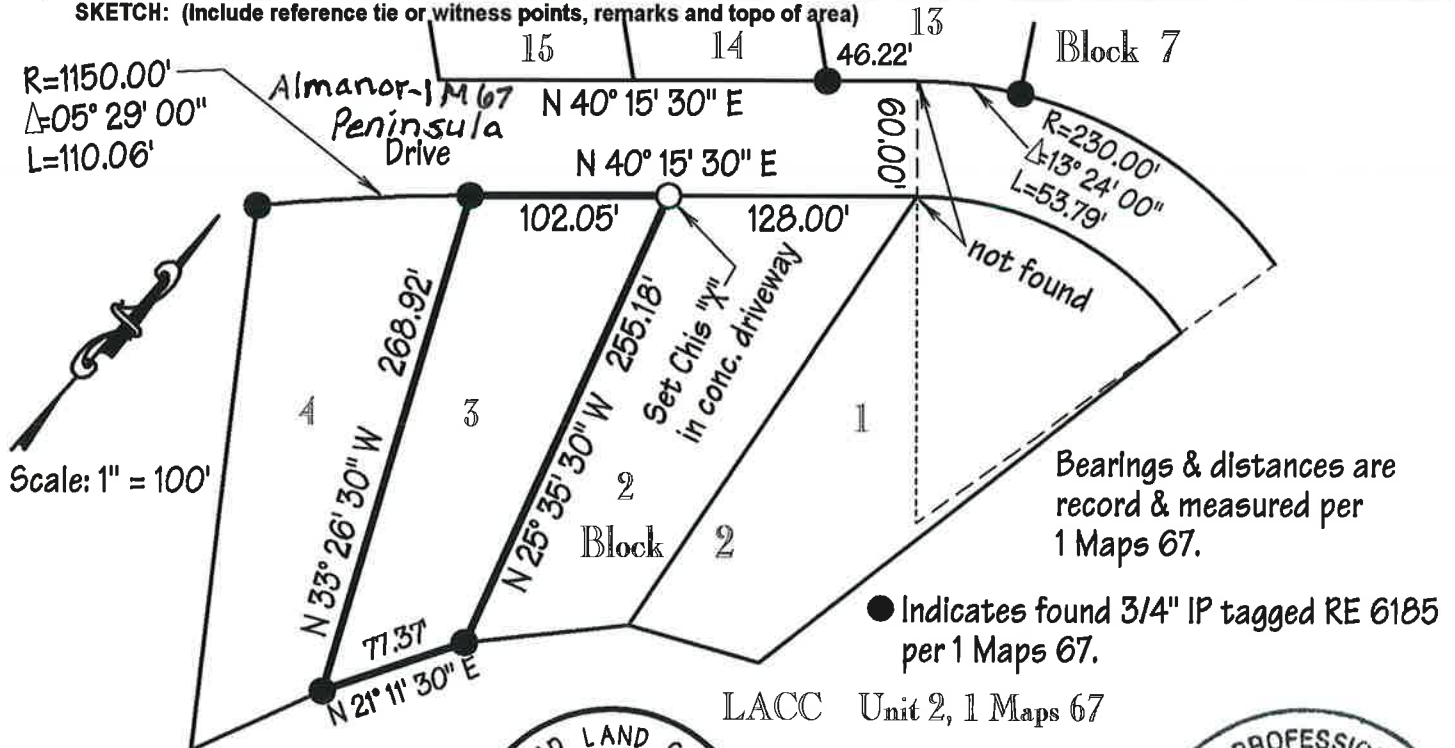
The most Northerly corner of Lot 3, Block 2, LACC Unit 2, 1 Maps 67 was presumably destroyed by the placement of a concrete driveway. The corner was re-established using the found corners on Lot 3 and monuments found across the street on Lot 13, Block 7.

PHYSICAL DESCRIPTION OF MONUMENTS REBUILT OR PERPETUATED

Set chiseled "X" in concrete driveway.

CALIFORNIA COORDINATE SYSTEM ORDER: FIRST SECOND THIRD
STATIONS USED: NGS (USC & GS) STATE COUNTY OTHER STATION EASTINGS (X)
ZONE ELEVATION NORTHINGS(Y)

SKETCH: (Include reference tie or witness points, remarks and topo of area)



SURVEYOR'S CERTIFICATE

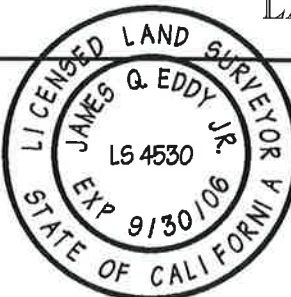
THIS CORNER RECORD WAS PREPARED BY ME OR UNDER MY DIRECTION IN CONFORMANCE WITH THE LAND SURVEYORS ACT ON September 30, 20 04.

SIGNED James Q. Eddy Jr.

L.S. or R.C.E. No. L.S. 4530

04-03-44

SEAL



COUNTY SURVEYOR'S CERTIFICATE

THE CORNER RECORD WAS RECEIVED AND EXAMINED AND FILED 10/25/05

BY: Robert T. Hunter

TITLE: Plumas Co. Engineering

DOCUMENT No. 311

