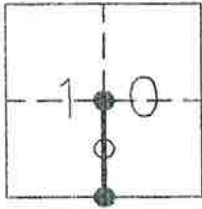


CORNER RECORD

Document Number 312

County of Plumas, California

Brief Legal Description The Northeast corner of Lot 12, Section 10, T. 23 N., R. 11 E, M.D.B. & M.



CORNER TYPE

Government Corner Control
Meander Property
Rancho Other
Date of Survey September 14, 2005

COORDINATES
(Optional)

N. _____
E. _____
Zone _____ Datum _____
Elev. _____

Corner-- Left as found Found and tagged Established Reestablished Rebuilt

Identification and type of corner found: Evidence used to identify or procedure used to establish or reestablish the corner:
Found corners shown on 12 RS 143 in good condition with record bearing trees. Set Northeast corner
of Lot 12 in record position shown on Book 12, Records of Survey, page 143 as shown on attached sketch.

A description of the physical condition of the monument as found and as set or reset:
Set nail and tag in rock 4" below surface. Placed 5/8" rebar with aluminum cap, stamped WC 10 N, 10.00'
southerly from nail and tag on line. Place bearing tree tag on pine South 12.5'. See attached sketch.

SURVEYOR'S STATEMENT

This Corner Record was prepared by me or under my direction in conformance with the Land Surveyors' Act on September 16, 2005.

Signed John L. Owen L.S. 5620
John L. Owen



COUNTY SURVEYOR'S STATEMENT

This Corner Record was received Sept. 21st 2005 and examined and filed October 25 2005.

Signed Robert T. Hunter Title Plumas Co. Surveyor



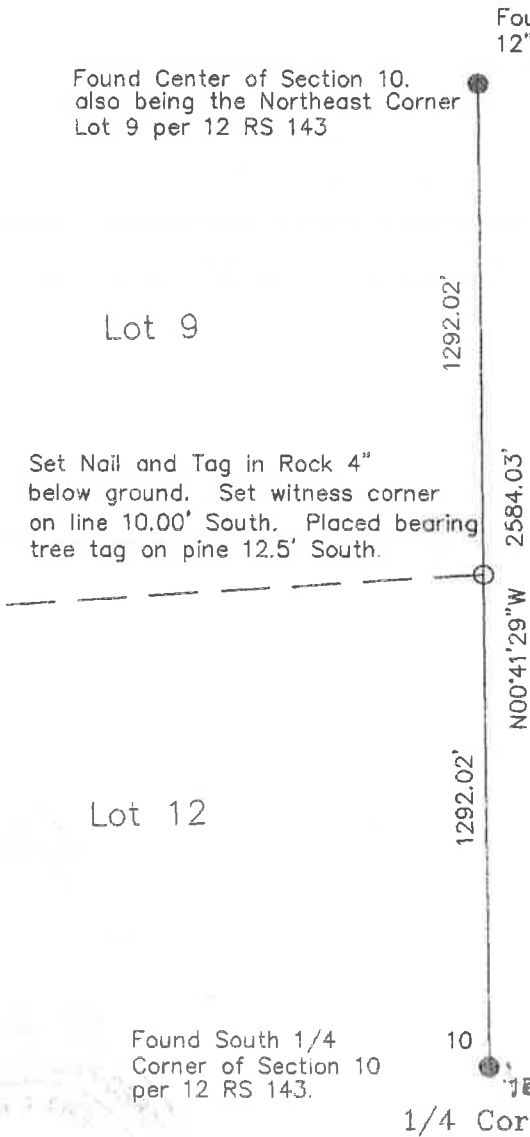
County Surveyor's Comment _____

NOTES

The Basis of Bearings for this Corner Record is $N00^{\circ}41'29''W$ between found monuments as shown on 12 RS 143.

LEGEND

- FOUND 5/8" Rebar with Aluminum Cap
LS 2843 per 12 RS 143
- Set Point as Described



1" = 500'



Corner Record for Sierra Pacific Industries

The Northeast Corner of Lot 12 of Section 10
Township 23 North, Range 11 East, M.D.B. & M.
Unincorporated Plumas County ~ California

Scale 1" = 500' September, 2005

Hamby Surveying Inc.
P.O. Box 1209
Portola, CA 96122
(530) 832-5571

05192