

CORNER RECORD

Document Number 3/3

Nearest Town Quincy
County of Plumas, California

The property corners of the Utility Parcel, Shown in Book 11 of Records of Surveys at page 34, Plumas County Records, and described in Book 732 of Official Records at page 273. Within Section 24, Township 24 North, Range 9 East, Mount Diablo Meridian.

115-271-011-12

CORNER TYPE

Property corner

Date of Survey September 30, 2005

Corner- Left as found Found and tagged Established
Reestablished Rebuilt

Identification and type of corner found: Evidence used to identify or procedure used to establish or reestablish the corner:

See Sketch - Page 2

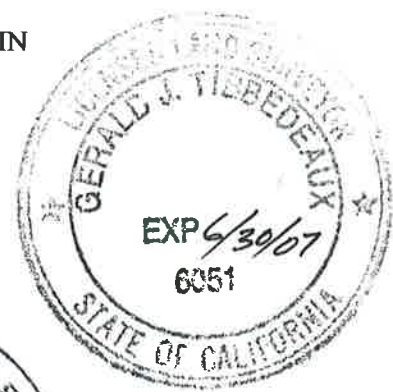
A description of the physical condition of the monument as found and as set or reset:

See Sketch - Page 2

SURVEYOR'S STATEMENT

THIS CORNER RECORD WAS PREPARED BY ME OR UNDER MY DIRECTION IN CONFORMANCE WITH THE LAND SURVEYOR'S ACT ON AUGUST 9, 2005.

Signed *Gerald Joseph Tibbedeaux* P.L.S. 6051
Gerald Joseph Tibbedeaux

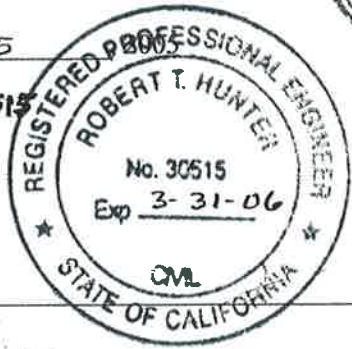


COUNTY SURVEYORS STATEMENT

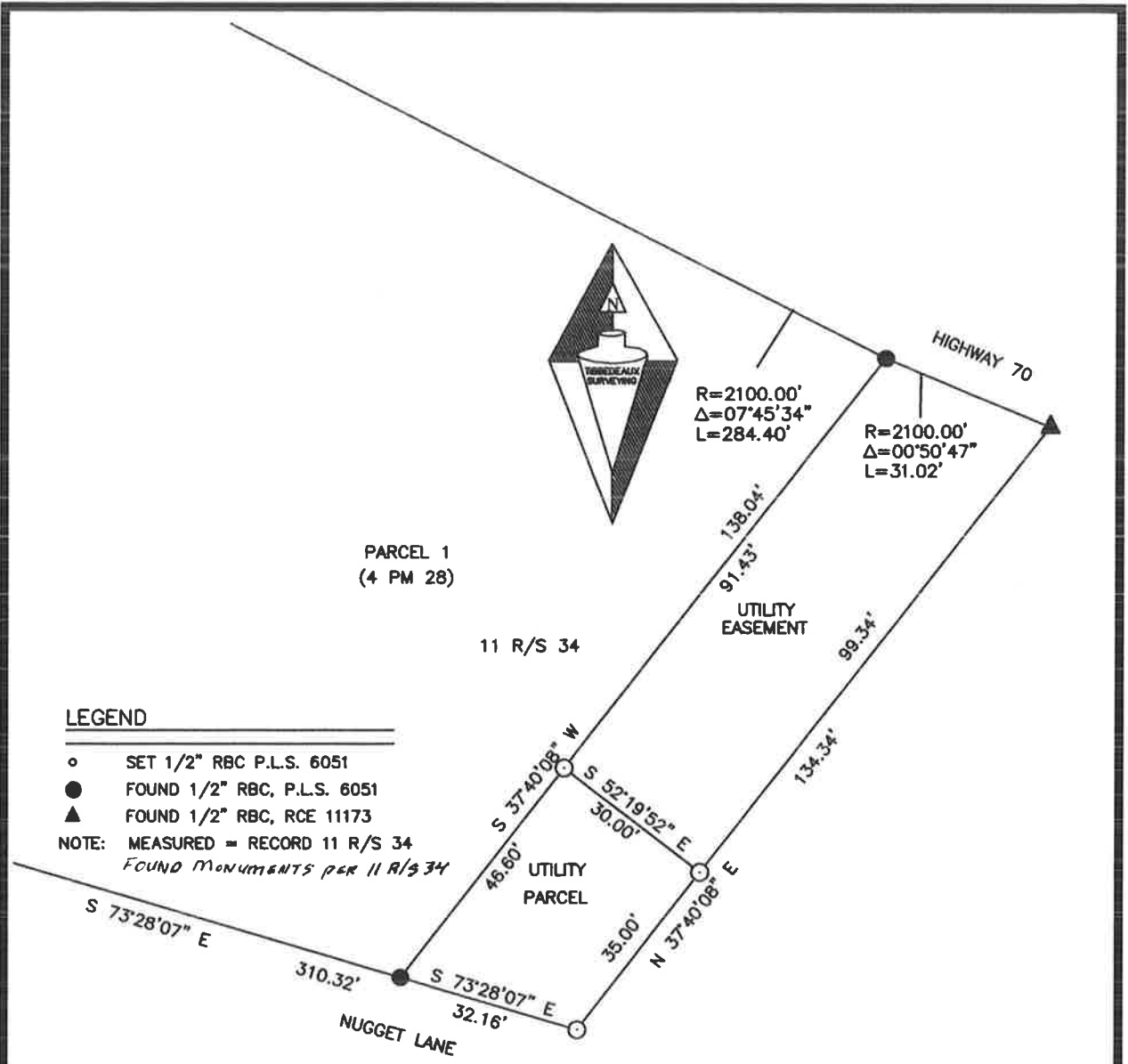
THIS CORNER RECORD WAS RECEIVED Nov. 3rd, 2005

AND EXAMINED AND FILED Dec. 6, 2005

Signed *R. Tom Hunter* R.C.E. 30515
R. Tom Hunter
Plumas County Surveyor



County Surveyor's Comment



**SKETCH OF MONUMENTATION OF UTILITY PARCEL SHOWN
IN BOOK 11 RECORDS OF SURVEYS PAGE 34.
FOR
QUINCY COMMUNITY SERVICES DISTRICT**

BOOK 732 OF OFFICIAL RECORDS, PAGE 273
WITHIN SECTION 24, T. 24 N., R. 9 E., M.D.M.
PLUMAS COUNTY CALIFORNIA
SCALE 1 INCH = 30 FEET SEPTEMBER, 2005

Tibbdeaux Surveying
PO Box 1960 - 565 Ridge Street
Portola, CA 96122
(530) 832-5772
1997-15-2