

CORNER RECORD

Document Number 314

Nearest Town Taylorville
County of Plumas, California

The property corners of Lots 6, 7, & 8 of Block 10 of the town of Taylorville, Book A of Maps page 45, Plumas County Records, including that part adjacent to the abandoned alley along the North Line of said Lots as shown in Book 6 of Records of Surveys at page 61 and described in Documents 2005-0009570 and 2005-0009568. Within Sections 27 & 34, Township 26 North, Range 10 East, Mount Diablo Meridian.

CORNER TYPE

Property corner

Date of Survey August 9, 2005

Corner- Left as found Found and tagged Established
Reestablished Rebuilt

Identification and type of corner found: Evidence used to identify or procedure used to establish or reestablish the corner:

See Sketch - Page 2

A description of the physical condition of the monument as found and as set or reset:

See Sketch - Page 2

SURVEYOR'S STATEMENT

THIS CORNER RECORD WAS PREPARED BY ME OR UNDER MY DIRECTION IN CONFORMANCE WITH THE LAND SURVEYOR'S ACT ON AUGUST 9, 2005.

Signed Gerald Joseph Tibbedeaux P.L.S. 6051
Gerald Joseph Tibbedeaux

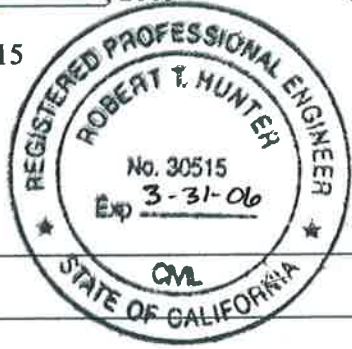


COUNTY SURVEYORS STATEMENT

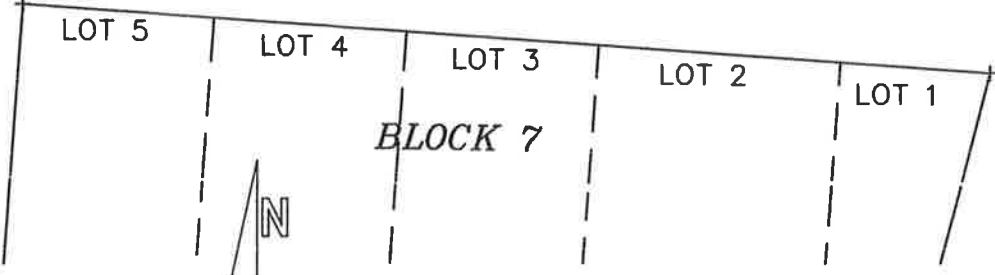
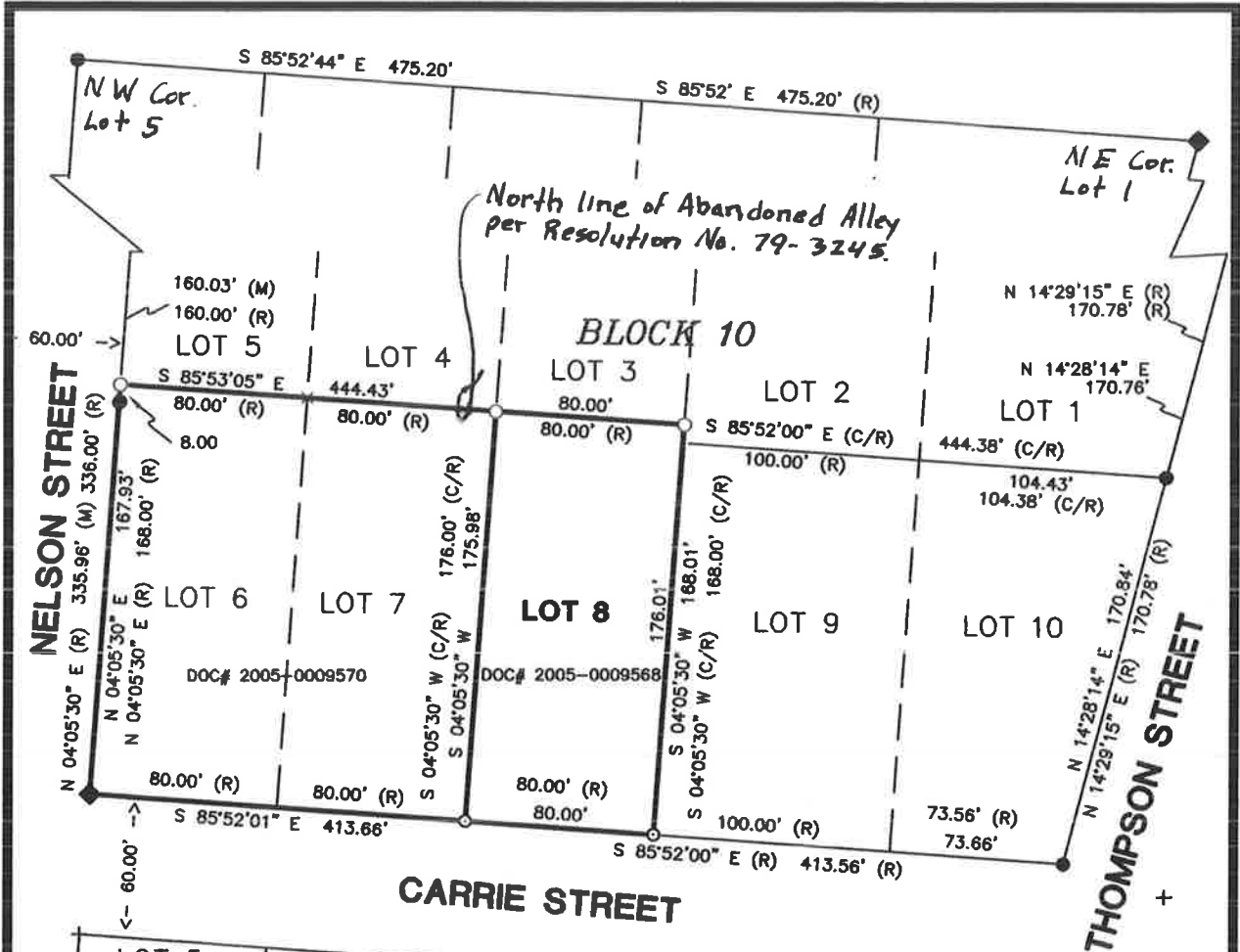
THIS CORNER RECORD WAS RECEIVED Nov. 3rd, 2005

AND EXAMINED AND FILED December 6,, 2005

Signed R. Tom Hunter R.C.E. 30515
R. Tom Hunter
Plumas County Surveyor



County Surveyor's Comment



LEGEND

- ◆ FND 1" IRON PIPE, SET TAG, PLS 6051
- SET 1/2" REBAR AND CAP, PLS 6051
- FOUND 1" IRON PIPE AND TAG LS 4643
- (R) RECORD PER INFORMATION 6 RS 61
- (C/R) CALCULATED INFORMATION PER 6 RS 61

SKETCH OF MONUMENTATION OF LOT 8 OF BLOCK 10 OF THE TOWN OF TAYLORSVILLE FOR JOHN S. MCMORROW

BOOK 6 OF RECORDS OF SURVEYS, PAGE 61
 WITHIN SECTIONS 27 & 34, T. 26 N., R. 10 E., M.D.M.
 PLUMAS COUNTY CALIFORNIA
 SCALE 1 INCH = 80 FEET AUGUST, 2005

Tibbodeaux Surveying
 PO Box 1960 - 565 Ridge Street
 Portola, CA 96122
 (330) 832-5772
 2005-11-01