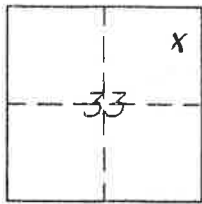


CORNER RECORD

Document Number 315

Portion of Sec. 33, T. 24 North, R. 11 East County of Plumas, California

Brief Legal Description Lot 168, Greenhorn Ranch Subdivision Unit 1, 3 M 30



CORNER TYPE

Government Corner Control
Meander Property
Rancho Other
Date of Survey November 10, 2005

COORDINATES (Optional)

N. _____
E. _____
Zone _____ Datum _____
Elev. _____

Corner-- Left as found Found and tagged Established Reestablished Rebuilt

Identification and type of corner found: Evidence used to identify or procedure used to establish or reestablish the corner:
Found Points indicated on attached sketch in good condition and in record position.

A description of the physical condition of the monument as found and as set or reset:
Set 5/8 rebar with Aluminum cap stamped LS 5620 at location for missing corner.

SURVEYOR'S STATEMENT

This Corner Record was prepared by me or under my direction in conformance with the Land Surveyors' Act on November 15, 2005.

Signed John L. Owen L.S. 5620
John L. Owen



COUNTY SURVEYOR'S STATEMENT

This Corner Record was received Nov. 17th 2005 and examined and filed December 6, 2005.

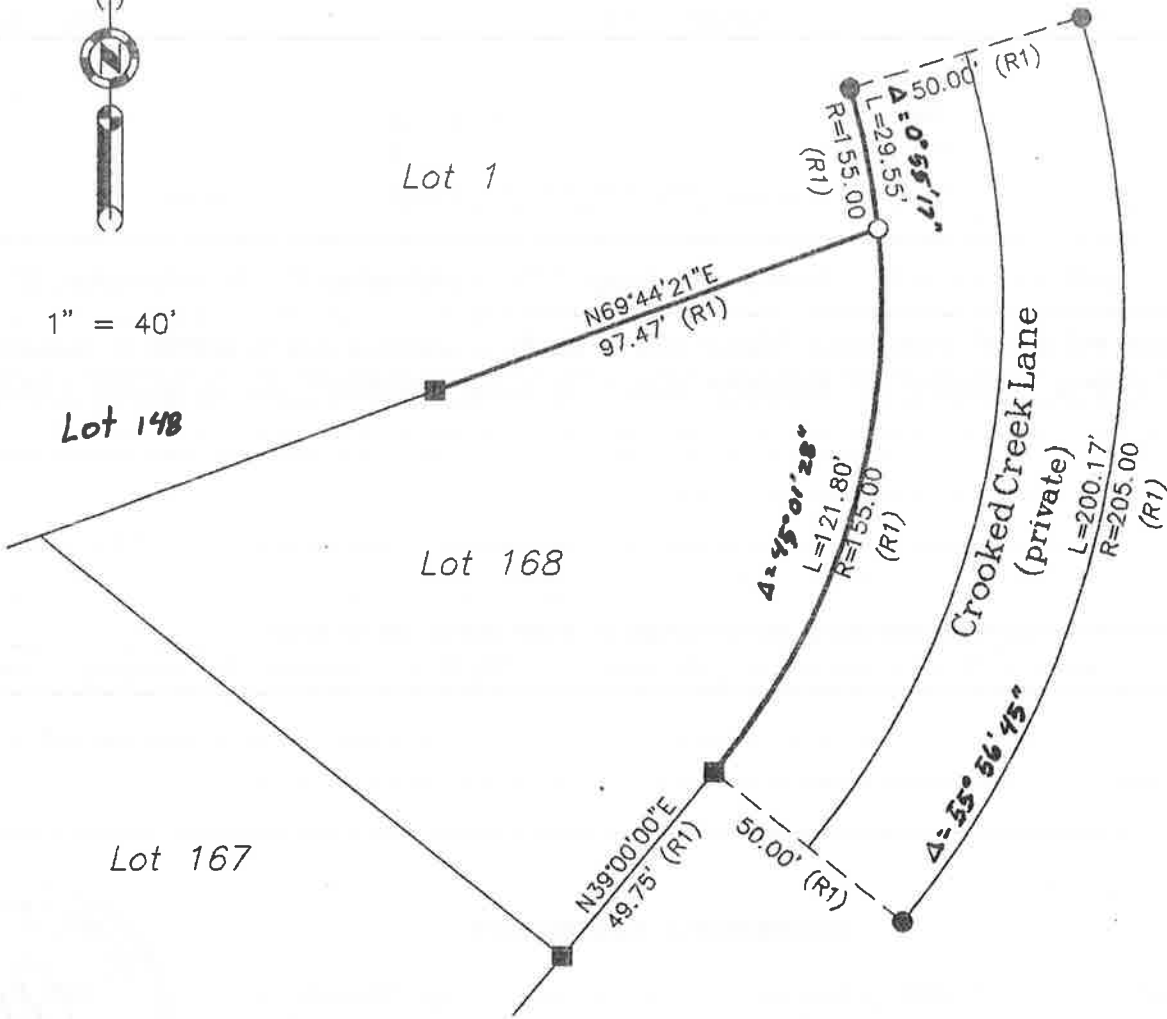
Signed R. Tom Hunter Title - Plumas County Engineer



County Surveyor's Comment (A)



1" = 40'



NOTE: Bearings and Distances are Record and Measured.

Lot 168
Greenhorn Ranch Unit 1
3 Maps 70

LEGEND

- FOUND 1/2" I.P. with tag, RCE 13054 (R1)
- FOUND 1" I.P., Open (R1)
- Set 5/8" rebar with Aluminum cap LS 5620
- (R1) RECORD per 3 Maps 70

Hamby Surveying Inc.
P.O. Box 1209
Portola, CA 96122
(530) 832-5571

05250