

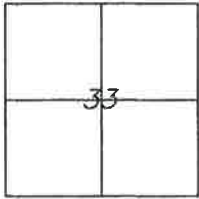
CORNER RECORD

Document Number 316

Section 33, T. 24 N., R. 11 E., MDM

County of Plumas, California

Brief Legal Description Lot 175 Greenhorn Ranch Unit 1, Book 3 Maps, Page 70.



CORNER TYPE

Government Corner Control
Meander Property
Rancho Other
Date of Survey December 1, 2005

COORDINATES

(Optional)

N. _____
E. _____
Zone _____ Datum _____
Elev. _____

Corner- Left as found Found and tagged Established Reestablished Rebuilt

Identification and type of corner found: Evidence used to identify or procedure used to establish or reestablish the corner:
Found Points indicated on attached sketch in good condition and in record position.

A description of the physical condition of the monument as found and as set or reset:
Set 5/8 rebar with Aluminum cap stamped LS 5620 at location for missing corner.

SURVEYOR'S STATEMENT

This Corner Record was prepared by me or under my direction in conformance with the Land Surveyors' Act on December 7, 2005.

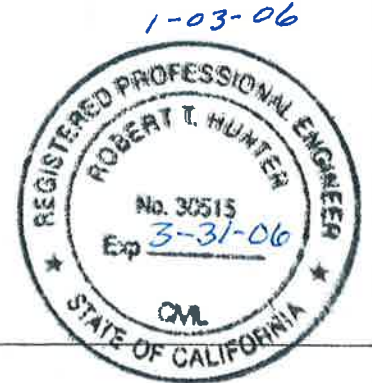
Signed John L. Owen L.S. 5620
John L. Owen



COUNTY SURVEYOR'S STATEMENT

This Corner Record was received Dec. 21st 2005 and examined and filed Jan. 05 2006.

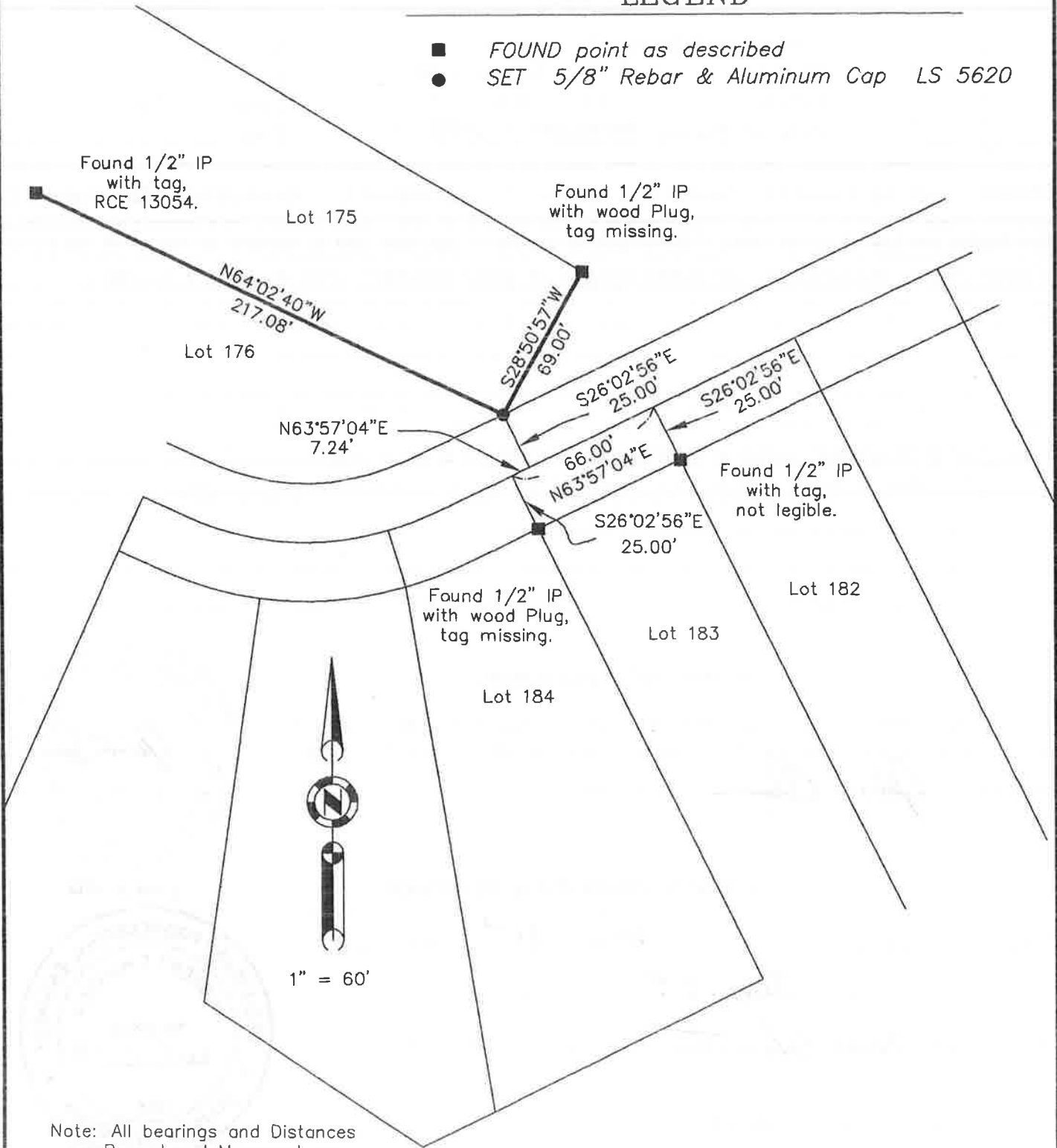
Signed R. Tom Hunter Title County Surveyor



County Surveyor's Comment _____

LEGEND

- FOUND point as described
- SET 5/8" Rebar & Aluminum Cap LS 5620



Note: All bearings and Distances are Record and Measured per Book 3 Maps, page 70.